

NDB RWY 35L

CITY OF COLORADO SPRINGS MUNI (COS)

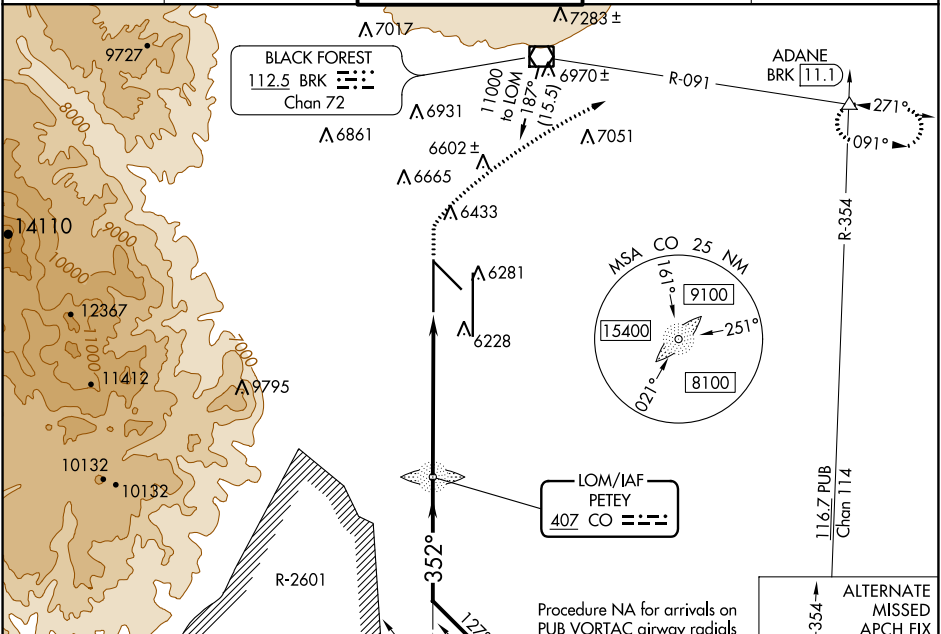
LOM CO 407	APP CRS 352°	Rwy Idg TDZE Apt Elev	11022 6075 6187
----------------------	------------------------	-----------------------------	--

▼ RADAR monitoring required when R-2601 in use.
▲ For inop MALSR, increase S-35L Cats C and D visibility to 1 3/8 mile.



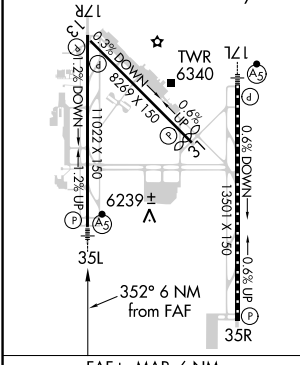
MISSED APPROACH: Climb to 6700 then climbing right turn to 9000 on heading 051° and on BRK VOR/DME R-091 to ADANE INT/BRK 11.1 DME and hold.

ATIS 125.0 254.3	SPRINGS APP CON 124.0 257.875	SPRINGS TOWER 119.9 360.6	GND CON 121.7 348.6	CLNC DEL 134.45 363.125
----------------------------	---	-------------------------------------	-------------------------------	-----------------------------------



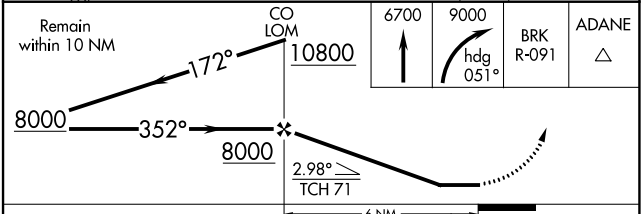
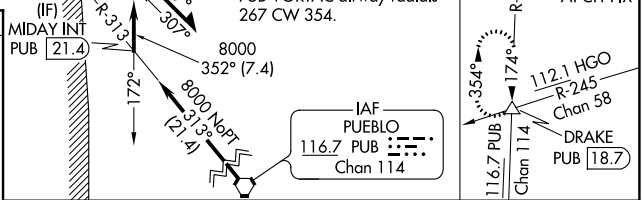
ELEV 6187 **D** TDZE 6075

HIRL Rwy 17R-35L and 17L-35R
 REL Rwy 13, 17R, 31 and 35R
 6207A TDZ/CL Rwy 17L and 35R
 MIRL Rwy 13-31



FAF to MAP 6 NM

Knots	60	90	120	150	180
Min:Sec	6:00	4:00	3:00	2:24	2:00



CATEGORY	A	B	C	D
S-35L	6540/40	465 (400-3/4)	6540/50	465 (400-1)
C CIRCLING	6740-1 553 (600-1)	6800-1 613 (700-1)	7040-2 1/2 853 (900-2 1/2)	7260-3 1073 (1100-3)

SW-1, 08 OCT 2020 to 05 NOV 2020

SW-1, 08 OCT 2020 to 05 NOV 2020