

LOC/DME I-AHI 109.1 Chan 28	APP CRS 352°	Rwy Idg 13501 TDZE 6118 Apt Elev 6187
--	------------------------	--

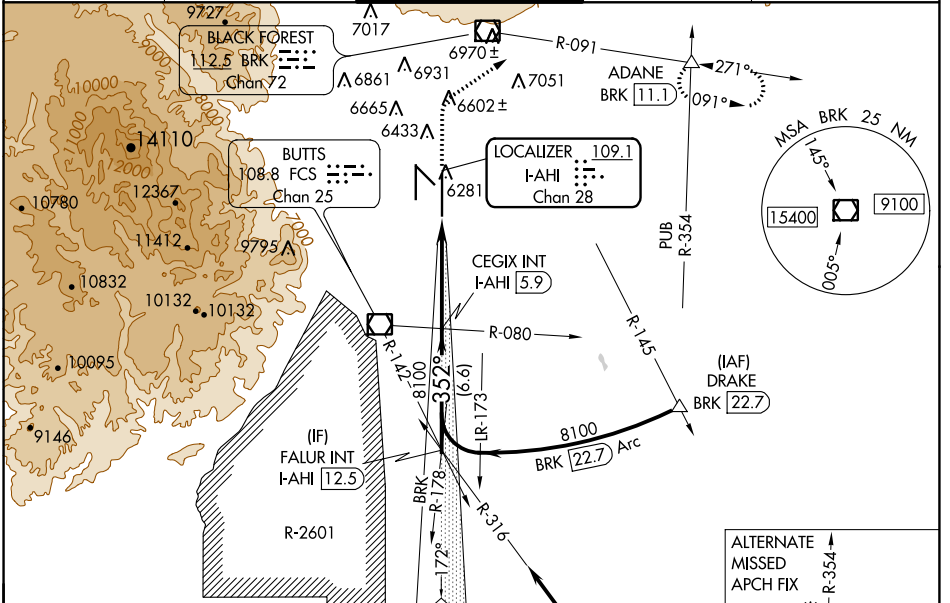
ILS or LOC RWY 35R

CITY OF COLORADO SPRINGS MUNI (COS)

⚠ RADAR required when R-2601 in use.

⚠ MISSED APPROACH: Climb to 6700 then climbing right turn to 9000 on heading 047° and on BRK VOR/DME R-091 to ADANE INT/BRK 11.1 DME and hold.

ATIS 125.0 254.3	SPRINGS APP CON 124.0 257.875	SPRINGS TOWER 119.9 360.6	GND CON 121.7 348.6	CLNC DEL 134.45 363.125
----------------------------	---	-------------------------------------	-------------------------------	-----------------------------------



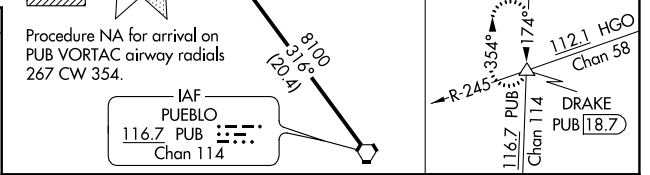
ELEV 6187 **D** TDZE 6118

MIRL Rwy 13-31
HIRL Rws 17R-35L and 17L-35R
REIL Rws 13, 17R, 31 and 35R
TDZ/CL Rws 17L and 35R

TWR 6340

35L
35R

352° 6.1 NM from FAF



352° 6.1 NM from FAF

Knots	60	90	120	150	180
Min:Sec	6:06	4:04	3:03	2:26	2:02

C CIRCLING

VGSI and ILS glidepath not coincident (VGSI Angle 3.00/TCH 72).

FALUR INT I-AHI 12.5

CEGIX INT I-AHI 5.9

6700

9000

hdg 047°

BRK R-091

ADANE

8100

352°

8100

I-AHI 0.6

* I-AHI DME ANTENNA

Use I-AHI DME when on the localizer course.

CATEGORY	A	B	C	D
S-ILS 35R	6318/40 200 (200-¾)			
S-LOC 35R	6420/55	302 (300-1)	6420/45	302 (300-¾)
C CIRCLING	6740-1 553 (600-1)	6800-1 613 (700-1)	7040-2½ 853 (900-2½)	7260-3 1073 (1100-3)

SW-1, 09 SEP 2021 to 07 OCT 2021

SW-1, 09 SEP 2021 to 07 OCT 2021