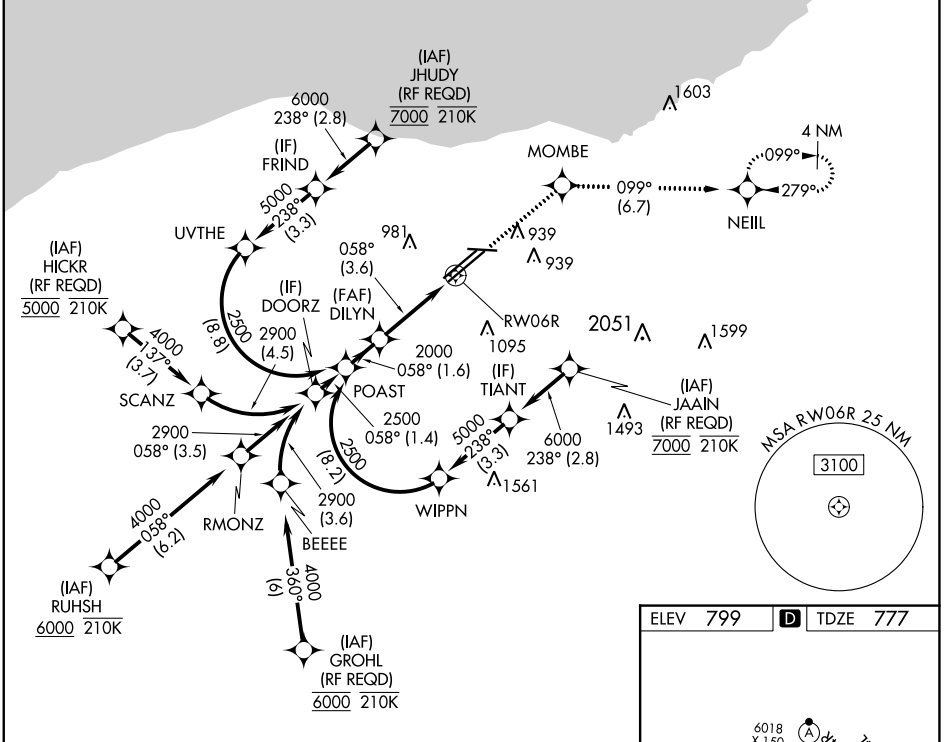


APP CRS	Rwy Idg	8029
058°	TDZE	777
	Apt Elev	799

RNAV (RNP) Z RWY 6R

CLEVELAND-HOPKINS INTL (CLE)

RNP AR APCH.			MALSR		
<p>▼ For unconsented Baro-VNAV systems, procedure NA below -18°C (0°F) or above 46°C (114°F). For inop ALS, increase RNP 0.15 all Cots visibility to RVR 5500.</p>			<p>MISSED APPROACH: Climb to 3000 direct MOMBE and on track 099° to NEILL and hold. *Missed approach requires minimum climb of 270 feet per NM to 1400.</p>		
D-ATIS	CLEVELAND APP CON	CLEVELAND TOWER	GND CON	CLNC DEL	CPDLC
ARR 127.85 DEP 132.375	126.55 346.325	124.5 273.45	121.7 273.45	125.05 273.45	



EC-2, 05 SEP 2024 to 03 OCT 2024

EC-2, 05 SEP 2024 to 03 OCT 2024

See planview for multiple IF locations.

3000	MOMBE	tr 099°	NEILL
------	-------	---------	-------

GP 3.10° TCH 58

POAST 2500, DILYN 2000, RWY 6R

1.6 NM, 3.6 NM

CATEGORY	A	B	C	D
RNP 0.15 DA*		1127/30	350 (400- $\frac{5}{8}$)	
RNP 0.30 DA		1229/45	452 (500- $\frac{7}{8}$)	

AUTHORIZATION REQUIRED

