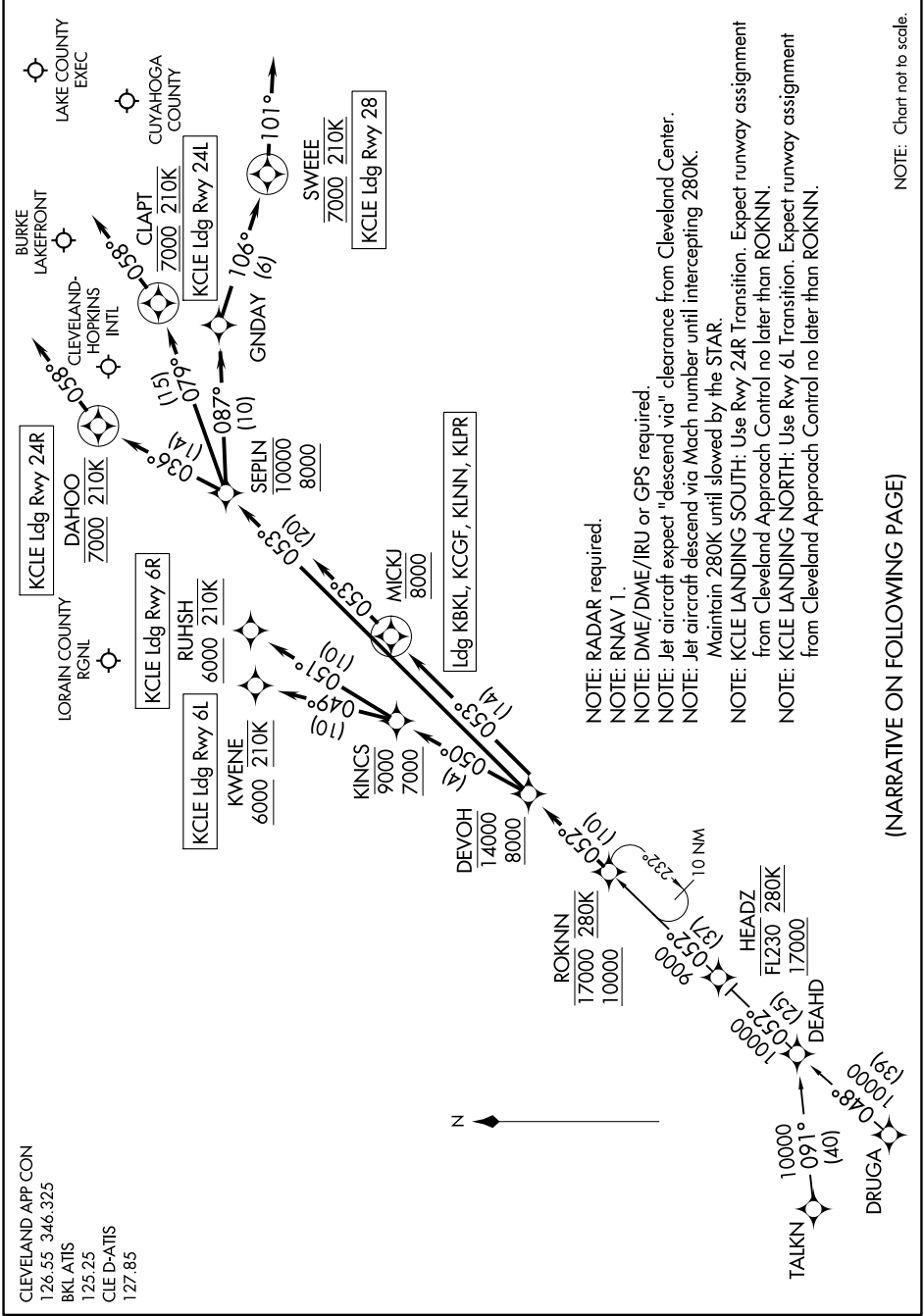


# ROKNN THREE ARRIVAL (RNAV)

CLEVELAND, OHIO

EC-2, 31 OCT 2024 to 28 NOV 2024



CLEVELAND APP CON  
 126.55 346.325  
 BKL ATIS  
 125.25  
 CLE D-ATIS  
 127.85

- NOTE: RADAR required.
- NOTE: RNAV 1.
- NOTE: DME/DME/IRU or GFS required.
- NOTE: Jet aircraft expect "descend via" clearance from Cleveland Center.
- NOTE: Jet aircraft descend via Mach number until intercepting 280K.
- Maintain 280K until slowed by the STAR.
- NOTE: KCLE LANDING SOUTH: Use Rwy 24R Transition. Expect runway assignment from Cleveland Approach Control no later than ROKNN.
- NOTE: KCLE LANDING NORTH: Use Rwy 6L Transition. Expect runway assignment from Cleveland Approach Control no later than ROKNN.

NOTE: Chart not to scale.

(NARRATIVE ON FOLLOWING PAGE)

EC-2, 31 OCT 2024 to 28 NOV 2024

# ROKNN THREE ARRIVAL (RNAV)

CLEVELAND, OHIO