

LOC/DME I-PXP 110.7 Chan 44	APP CRS 281°	Rwy Idg TDZE 799 Apt Elev 799	6018
---	------------------------	---	-------------

ILS or LOC RWY 28

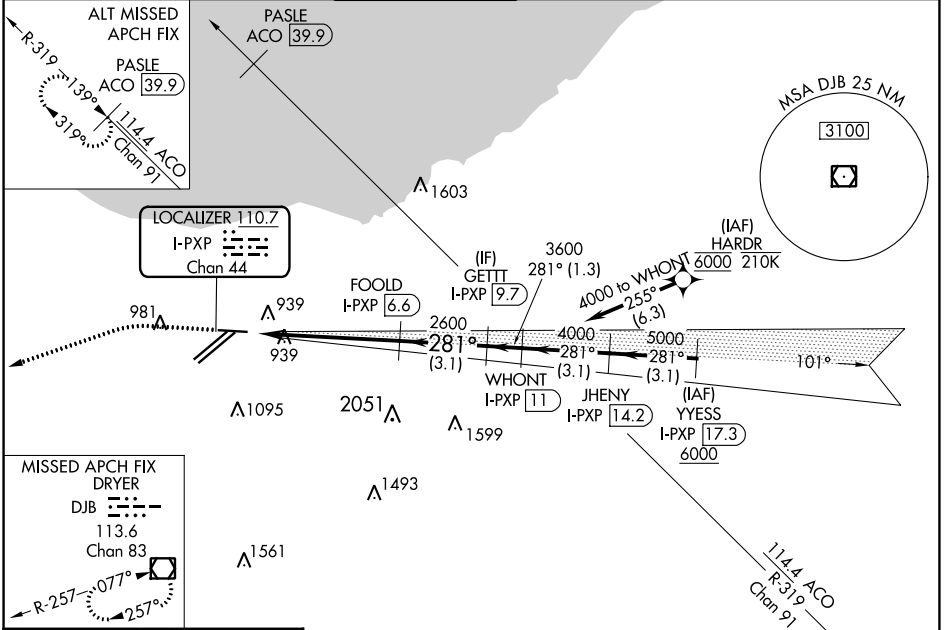
CLEVELAND-HOPKINS INTL (CLE)

RNAV 1. From HARDR: RNAV 1-DME/DME/IRU or GPS required for procedure entry. Aircraft not DME/DME/IRU or GPS equipped - RADAR required for procedure entry.
DME required.

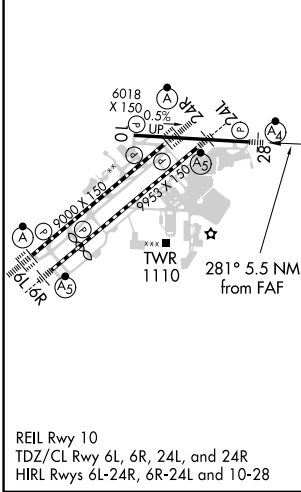
MALSF MISSED APPROACH: Climb to 1400 then climbing left turn to 3000 direct DJB VOR/DME and hold.

Circling Rwy 10 NA at night. Inop table does not apply to S-ILS 28.

D-ATIS ARR 127.85 DEP 132.375	CLEVELAND APP CON 126.55 346.325	CLEVELAND TOWER 124.5 273.45	GND CON 121.7 273.45	CLNC DEL 125.05 273.45	CPDLC
---	--	--	--------------------------------	----------------------------------	-------



ELEV 799	D	TDZE 799
-----------------	----------	-----------------



1400	3000	DJB	
*LOC only.			
I-PXP 1.1	*I-PXP 2.6	FOOLD I-PXP 6.6	GETTT I-PXP 9.7
2600		2600	3600
281°		281°	3600
GS 3.00°		TCH 46	
-1.6 NM		4 NM	3.1 NM
CATEGORY	A	B	C
S-ILS 28	999/40		200 (200-¾)
S-LOC 28	1340/40	541 (600-¾)	1340-1¾ 541 (600-1¾)
C CIRCLING	1420-1	621 (700-1)	1420-1¾ 621 (700-1¾) 1420-2 621 (700-2)

EC-2, 05 SEP 2024 to 03 OCT 2024

EC-2, 05 SEP 2024 to 03 OCT 2024