

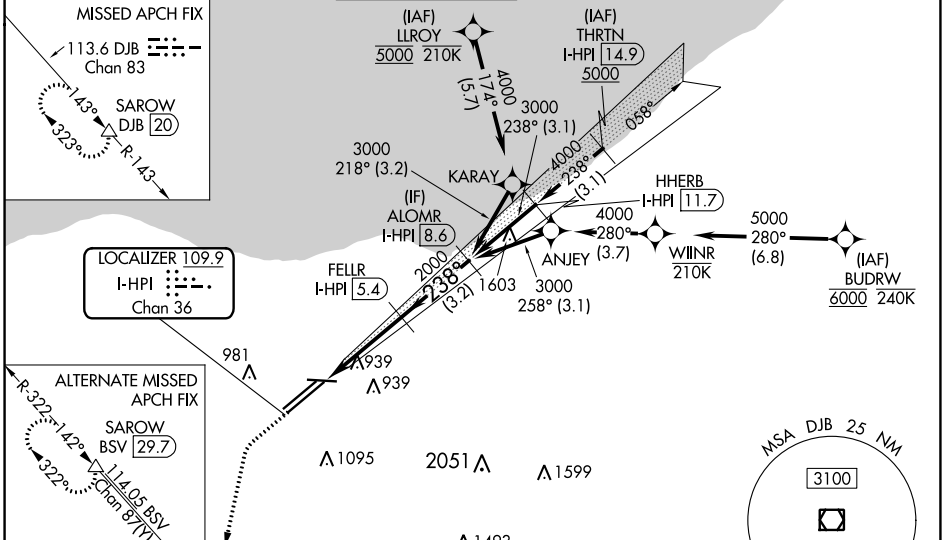
|   |                        |   |
|---|------------------------|---|
| LOC/DME I-HPI<br><b>109.9</b><br>Chan <b>36</b> | APP CRS<br><b>238°</b> | Rwy Idg <b>9953</b><br>TDZE <b>786</b><br>Apt Elev <b>799</b> |
|---|------------------------|---|

# ILS RWY 24L (SA CAT II)

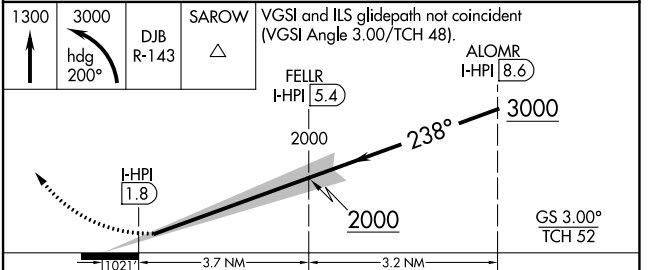
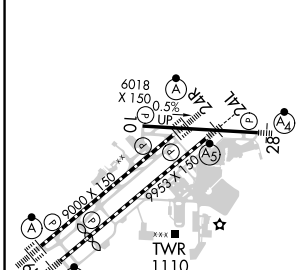
CLEVELAND-HOPKINS INTL (CLE)

|   |            |  |
|---|------------|--|
| DME required. Aircraft not DME/DME/IRU or GPS equipped - RADAR required for procedure entry. RNAV 1. From LLROY and BUDBRW: RNAV 1-DME/DME/IRU or GPS required for procedure entry.   | MALSRL<br> | MISSED APPROACH: Climb to 1300 then climbing left turn to 3000 on heading 200° and DJB VOR/DME R-143 to SAROW/DJB 20 DME and hold. |
| <p>Simultaneous approach authorized. Simultaneous operations require use of vertical guidance; maintain last assigned altitude until established on glideslope. Reduced lighting: requires specific OPSPEC, MSPEC, or LOA approval and use of autoland or HUD to touchdown.</p> |            |  |

|   |  |  |                                |                                  |       |
|---|--|--|--------------------------------|----------------------------------|-------|
| D-ATIS<br>ARR <b>127.85</b><br>DEP <b>132.375</b> | CLEVELAND APP CON<br><b>126.55 364.325</b> | CLEVELAND TOWER<br><b>124.5 273.45</b> | GND CON<br><b>121.7 273.45</b> | CLNC DEL<br><b>125.05 273.45</b> | CPDLC |
|---|--|--|--------------------------------|----------------------------------|-------|



|          |          |              |
|----------|----------|--------------|
| ELEV 799 | <b>D</b> | TDZE 24L 786 |
|----------|----------|--------------|



|           |                      |   |   |   |
|-----------|----------------------|---|---|---|
| CATEGORY  | A                    | B | C | D |
| S-ILS 24L | RA 100/12 100 DA 886 |   |   |   |

**SA CATEGORY II ILS - SPECIAL AIRCREW & AIRCRAFT CERTIFICATION REQUIRED**

REIL Rwy 10  
TDZ/CL Rwy 6L, 6R, 24L, and 24R  
HIRL Rwy 6L-24R, 6R-24L, and 10-28

EC-2, 05 SEP 2024 to 03 OCT 2024

EC-2, 05 SEP 2024 to 03 OCT 2024