

GTLKE FOUR DEPARTURE (RNAV)

(NARRATIVE ON FOLLOWING PAGE)

EC-2, 05 SEP 2024 to 03 OCT 2024

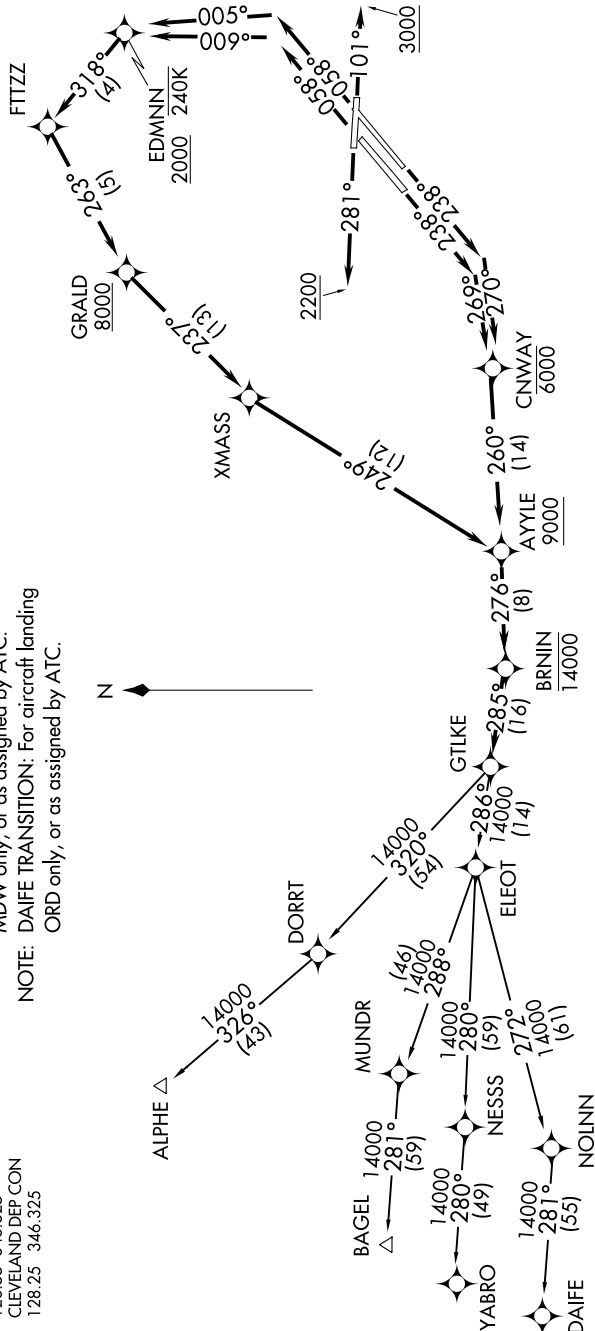
EC-2, 05 SEP 2024 to 03 OCT 2024

**TOP ALTITUDE:
14000**

D-ATIS 132.375
 CINC DEL 125.05 273.45
 CPDIC
 GND CON 121.7 273.45
 CLEVELAND TOWER 124.5 273.45
 CLEVELAND APP CON 126.55 346.325
 CLEVELAND DEP CON 128.25 346.325

NOTE: RADAR required.
 NOTE: RNAV 1.
 NOTE: DME/DME/IRU or GPS required.
 NOTE: BAGEL TRANSITION: For aircraft landing MDW only, or as assigned by ATC.
 NOTE: DAIFE TRANSITION: For aircraft landing ORD only, or as assigned by ATC.

TAKEOFF MINIMUMS
 Rwy 6L/R, 24L/R, 28: Standard with a minimum climb of 500' per NM to 1300.
 Rwy 10: Standard with a minimum climb of 500' per NM to 1600.



NOTE: Chart not to scale.