

ROCKT ONE DEPARTURE (RNAV)

AL-83 (FAA)

CINCINNATI, OHIO

020Z 08 OCT 2020 to 05 NOV 2020

TAKEOFF MINIMUMS

- Rwy 3L: 400-2 with minimum climb of 226' per NM to 1300 or standard with minimum climb of 423' per NM to 1000.
- Rwy 3R: 400-2 with minimum climb of 233' per NM to 1300 or standard with minimum climb of 384' per NM to 1100.
- Rwy 7: 400-1 3/4 with minimum climb of 279' per NM to 1000 or standard with minimum climb of 451' per NM to 1000.
- Rwy 21L: 500-2 1/2 with minimum climb of 254' per NM to 1100 or standard with minimum climb of 439' per NM to 1000.
- Rwy 21R: 500-2 3/4 with minimum climb of 226' per NM to 1100 or standard with minimum climb of 489' per NM to 1100.
- Rwy 25: 600-2 1/2 with minimum climb of 268' per NM to 1100.

ATIS 120.25
 LUNKEN TOWER ★
 118.7 (CTAF) 257.8
 GND CON
 121.9
 CLNC DEL
 121.9
 CLNC DEL
 124.9 (When twr closed)
 CINCINNATI DEP CON
 121.0 254.25

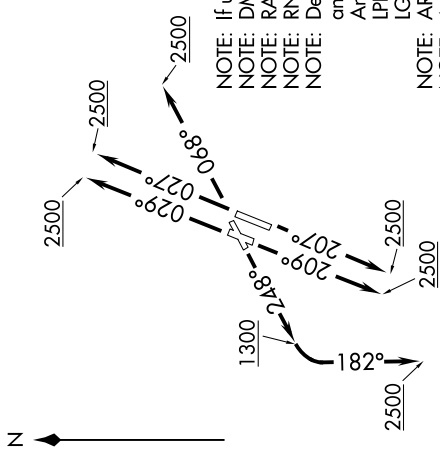
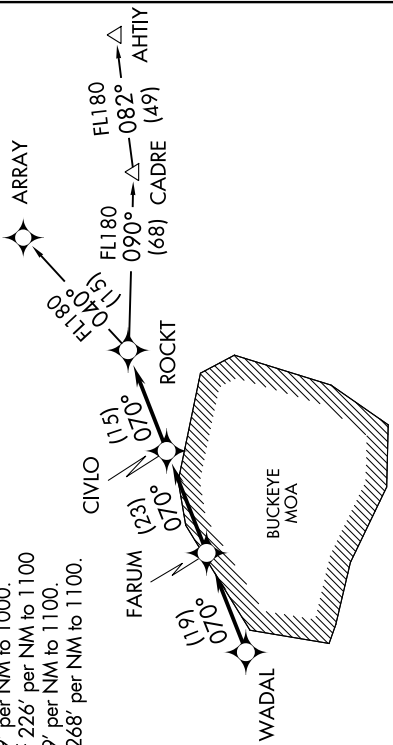
ROCKT ONE DEPARTURE (RNAV)

(ROCKT1.ROCKT) 15AUG19

CINCINNATI MUNI AIRPORT LUNKEN FIELD (L.U.K)

CINCINNATI, OHIO

**TOP ALTITUDE:
ASSIGNED BY ATC.**



NOTE: If unable to accept climb rates, advise ATC on initial contact.
 NOTE: DME/DME/IRU or GPS required.
 NOTE: RADAR required.
 NOTE: RNAV 1.

NOTE: Departure procedure limited to aircraft with the following destination airports and departure times as indicated:
 Anytime - ABE, AGC, ALB, AVP, BDL, BKL, BOS, BWI, CAK, CGF, CLE, LNN, LPR, MDT, MHT, PHL, PIT, PNE, PVD, PWM, SWF, TTN, UNV, and overseas flights.
 LGA between 1000-1800 UTC.

NOTE: ARRAY TRANSITION (ROCKT1.ARRAY) limited to aircraft landing: BKL, CAK, CLE, CGF, LNN, LPR.
 NOTE: Accelerate to 250K, if unable advise ATC.

(NARRATIVE ON FOLLOWING PAGE)

NOTE: Chart not to scale.

EC-2, 08 OCT 2020 to 05 NOV 2020