

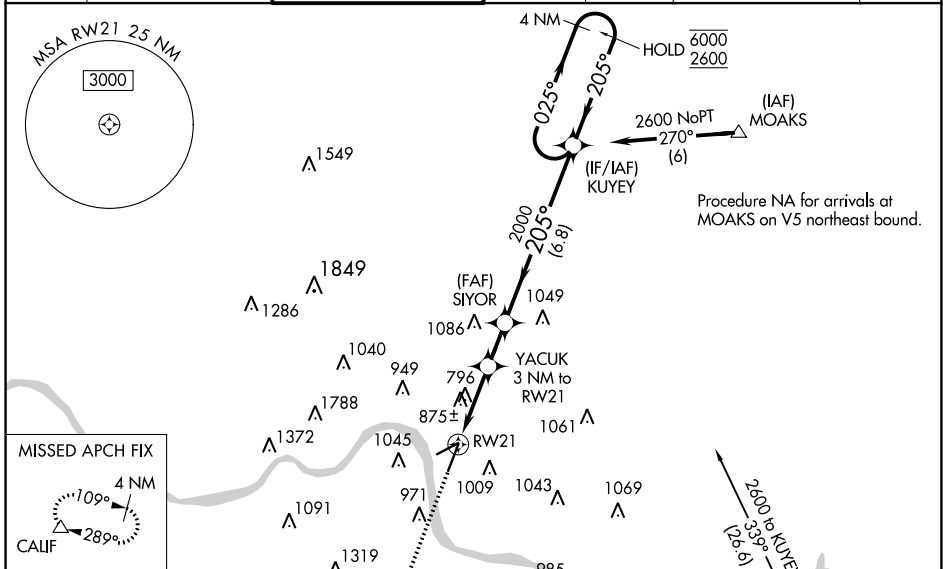
WAAS CH 90148 W21A	APP CRS 205°	Rwy Idg 6101 TDZE 475 Apt Elev 482
--	------------------------	---

RNAV (GPS) RWY 21

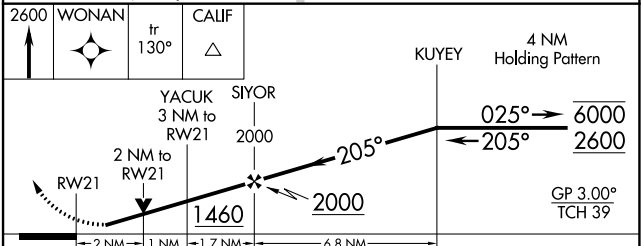
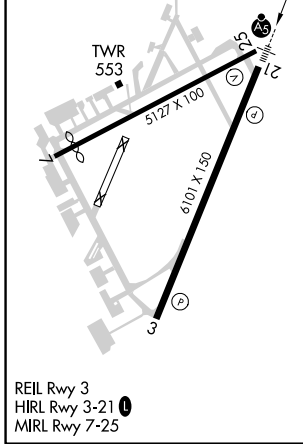
CINCINNATI MUNI/LUNKEN FLD (LUK)

RNP APCH-GPS.		MALSRS	MISSED APPROACH: Climb to 2600 direct WONAN and on track 130° to CALIF and hold.
<p>▼ Circling NA for Cat D north of Rwy 7-25. Circling Rwy 7 NA at night. For uncompensated Baro-VNAV systems, LNAV/VNAV NA below -15°C or above 54°C. Rwy 21 helicopter visibility reduction below RVR 4000 NA. Inop table does not apply to LPV all Cats and LNAV Cat A and B visibility. For inop ALS, increase LNAV/VNAV all Cats and LNAV Cat C and D visibility to 1/8 SM.</p>			

ATIS 123.6	CINCINNATI APP CON 121.0 254.25	LUNKEN TOWER ★ 118.7 (CTAF) 257.8	GND CON 121.9	CLNC DEL 121.9	CLNC DEL 124.9 (When twr closed)	UNICOM 122.95
----------------------	---	---	-------------------------	--------------------------	---	-------------------------



ELEV 482	D	TDZE 475
----------	----------	----------



CATEGORY	A	B	C	D
LPV DA		797/50	322 (400-1)	
LNAV/VNAV DA		1140-1½	665 (700-1½)	
LNAV MDA	1140/50	665 (700-1)	1140-1½	665 (700-1½)
CIRCLING	1260-1 778 (800-1)	1360-1¼ 878 (900-1¼)	1360-2½ 878 (900-2½)	1400-3 918 (1000-3)