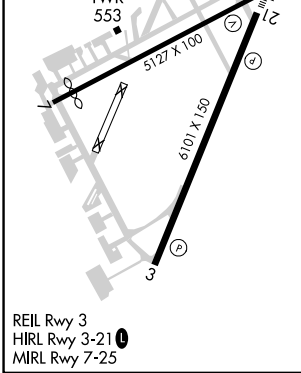
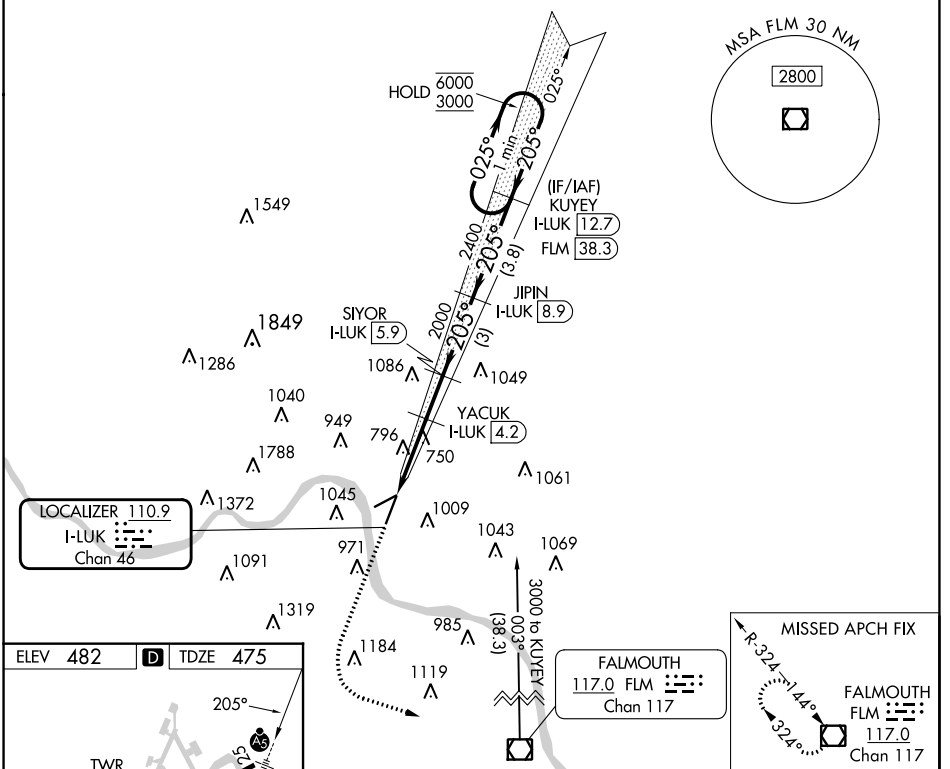


LOC/DME I-LUK 110.9 Chan 46	APP CRS 205°	Rwy Idg TDZE 475 Apt Elev 482	6101
--	------------------------	---	-------------

ILS or LOC RWY 21

CINCINNATI MUNI/LUNKEN FLD (LUK)

DME required.		MALSR		MISSED APPROACH: Climb to 2000 then climbing left turn to 3000 direct FLM VOR/DME and hold.		
Rwy 21 helicopter visibility reduction below RVR 4000 NA. Circling Rwy 7 NA at night. Circling NA for Cat D north of Rwy 7-25. Inop table does not apply to S-ILS 21 all Cats and S-LOC 21 Cats A and B.						
ATIS 123.6	CINCINNATI APP CON 121.0 254.25	LUNKEN TOWER ★ 118.7 (CTAF) 0 257.8	GND CON 121.9	CLNC DEL 121.9	CLNC DEL 124.9 (When twr closed)	UNICOM 122.95



	2000	3000	FLM		SIYOR I-LUK 5.9 JIPIN I-LUK 8.9 YACUK I-LUK 4.2 KUYEY I-LUK 12.7	One Minute Holding Pattern