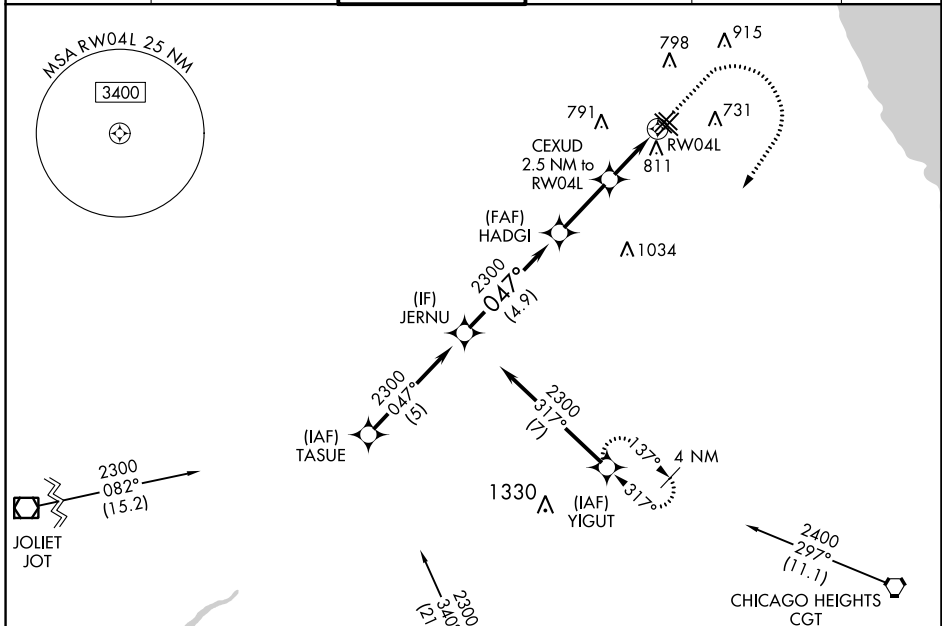


WAAS CH 97741 W04B	APP CRS 047°	Rwy Idg 4749 TDZE 617 Apt Elev 620
--	------------------------	---

RNAV (GPS) RWY 4L

CHICAGO MIDWAY INTL (MDW)

RNP APCH.			MISSED APPROACH: Climb to 1100 then climbing right turn to 2400 direct YIGUT and hold.		
⚠ Circling to Rwy 31R NA at night. ⚠ For uncompensated Baro-VNAV systems, LNAV/VNAV NA below -19°C or above 54°C. Rwy 4L helicopter visibility reduction below 3/4 SM NA.					
D-ATIS 132.75	CHICAGO APP CON 128.2 388.0	MIDWAY TOWER 135.2 269.125	GND CON 118.075	CLNC DEL 124.625	CPDLC



VGSi and RNAV glidepath not coincident (VGSi Angle 3.00/TCH 39).		1100	2400	YIGUT
JERNU	HADGI	CEXUD		
2300	2300	2300		
GP 3.00°	047°	*1460		
TCH 55				
4.9 NM		2.6 NM	1.2 NM	1.3 NM
CATEGORY	A	B	C	D
LPV DA		867-3/4	250 (300-3/4)	
LNAV/VNAV DA		1021-1 1/8	404 (500-1 1/8)	
LNAV MDA	1080-1	463 (500-1)	1080-1 3/8	463 (500-1 3/8)
CIRCLING	1120-1	500 (500-1)	1340-2	1340-2 1/4
			720 (800-2)	720 (800-2 1/4)

ELEV 620 [D] TDZE 617

HIRL Rws 4R-22L and 13C-31C
MIRL Rws 4L-22R, 13L-31R, and 13R-31L
REIL Rws 4R, 22L, and 31C
RLS Rws 13C and 31C

The terminal area diagram shows the layout of runways 4R, 4L, 22R, 22L, 13C, 13L, 31R, and 31L, along with Tower 750 and various taxiways and holding areas.

EC-3, 03 OCT 2024 to 31 OCT 2024

EC-3, 03 OCT 2024 to 31 OCT 2024