

# RNAV (GPS) RWY 31R

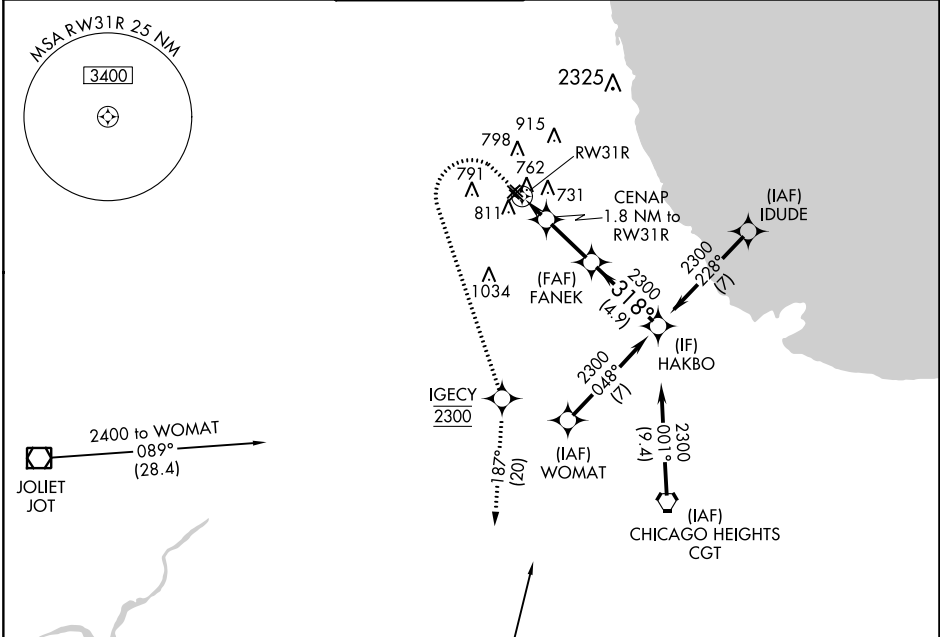
CHICAGO MIDWAY INTL (MDW)

APP CRS	Rwy Idg	<b>5141</b>
<b>318°</b>	TDZE	<b>610</b>
	Apt Elev	<b>620</b>

RNP APCH.  
 ▼ Rwy 31R helicopter visibility reduction below 1 SM NA.  
 ▲ Straight-in Rwy 31R and Circling Rwy 31R NA at night.

MISSED APPROACH: Climb to 1100 then climbing left turn to 2300 direct IGECY then climb to 2600 on track 187° to EON VORTAC and hold.

D-ATIS	CHICAGO APP CON	MIDWAY TOWER	GND CON	CLNC DEL	CPDLC
<b>132.75</b>	<b>128.2 388.0</b>	<b>135.2 269.125</b>	<b>118.075</b>	<b>124.625</b>	



EC-3, 03 OCT 2024 to 31 OCT 2024

EC-3, 03 OCT 2024 to 31 OCT 2024

ELEV 620	<b>D</b>	TDZE 610
----------	----------	----------

HIRL Rwy 4R-22L and 13C-31C  
 MIRL Rwy 4L-22R, 13L-31R, and 13R-31L  
 REIL Rwy 4R, 22L, and 31C  
 RLLS Rwy 13C and 31C

1100	2300	IGECY	2600	EON	VGSI and descent angles not coincident (VGSI Angle 3.00/TCH 44).
↑	↷	✧	↑	⬠	
		tr 187°			
CENAP 1.8 NM to RWY 31R		FANEK		HAKBO	
RWY 31R		1220	2300	2300	2300
1.8 NM		3.3 NM		4.9 NM	
CATEGORY	A	B	C	D	
LNAV MDA	1020-1	410 (400-1)	1020-1½	410 (400-1½)	
<b>C</b> CIRCLING	1120-1	500 (500-1)	1340-2	1340-2¼	720 (800-2¼)
			720 (800-2¼)		