

WAAS CH 73009 W09A	APP CRS 085°	Rwy Idg TDZE Apt Elev	7985 6144 6160
--	------------------------	-----------------------------	---

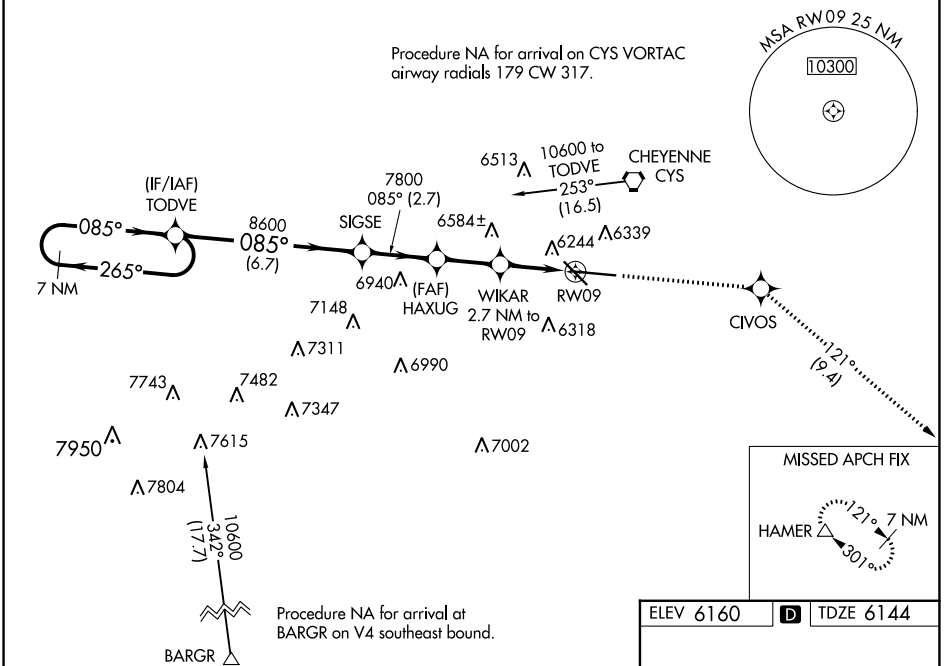
RNAV (GPS) RWY 9

CHEYENNE RGNL/JERRY OLSON FLD (CYS)

⚠ For uncompensated Baro-VNAV systems, LNAV/VNAV NA below -27°C (-16°F) or above 36°C (96°F). DME/DME RNP-0.3 NA. Rwy 9 helicopter visibility reduction below 3/4 SM NA.

MISSED APPROACH: Climb to 8500 direct CIVOS and on track 121° to HAMER and hold.

ATIS 134.425 278.3	CHEYENNE APP CON* 124.55 263.075	CHEYENNE TOWER* 118.7(CTAF) 0 257.8	GND CON 121.9 254.275	UNICOM 122.95
------------------------------	--	--	---------------------------------	-------------------------



NW-1, 08 AUG 2024 to 05 SEP 2024

NW-1, 08 AUG 2024 to 05 SEP 2024

7 NM Holding Pattern	TODVE	SIGSE	HAXUG	WIKAR 2.7 NM to RW09	*RNAV only
10600 ← 265°	← 085°	8600	7800	*1.1 NM to RW09	
GP 3.00° TCH 50		7800	*7060		
	6.7 NM	2.7 NM	2.3 NM	1.6 NM	1.1 NM
CATEGORY	A	B	C	D	
LPV DA	6473-1¼		329 (400-1¼)		
LNAV/VNAV DA	6543-1½		399 (400-1½)		
LNAV MDA	6540-1		396 (400-1)		6540-1¼ 396 (400-1¼)
CIRCLING	6640-1 480 (500-1)		6900-2 740 (800-2)		6940-2½ 780 (800-2½)

ELEV 6160 TDZE 6144

Diagram details: RWY 9 (2710 x 150), TWR 6256, 0.4% DOWN, 0.7% UP. Obstacles: 6256, 6300, 6350, 6400, 6450, 6500, 6550, 6600, 6650, 6700, 6750, 6800, 6850, 6900, 6950, 7000, 7050, 7100, 7150, 7200, 7250, 7300, 7350, 7400, 7450, 7500, 7550, 7600, 7650, 7700, 7750, 7800, 7850, 7900, 7950, 8000, 8050, 8100, 8150, 8200, 8250, 8300, 8350, 8400, 8450, 8500, 8550, 8600, 8650, 8700, 8750, 8800, 8850, 8900, 8950, 9000, 9050, 9100, 9150, 9200, 9250, 9300, 9350, 9400, 9450, 9500, 9550, 9600, 9650, 9700, 9750, 9800, 9850, 9900, 9950, 10000.

REIL Rwy 9, 13, and 31
HIRL Rwy 9-27
MIRL Rwy 13-31