

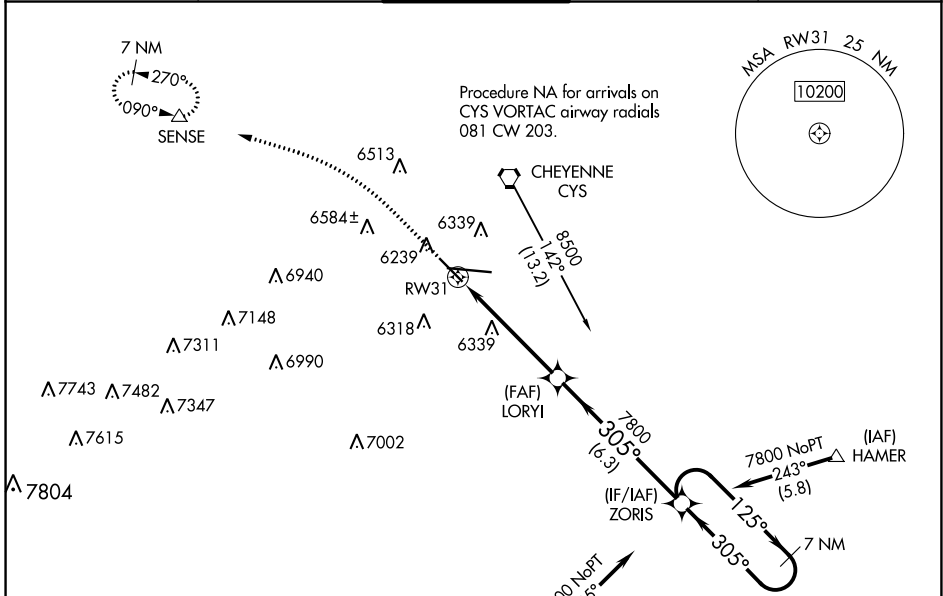
WAAS CH <b>99609</b> <b>W31A</b>	APP CRS <b>305°</b>	Rwy Idg TDZE Apt Elev	<b>4880</b> <b>6147</b> <b>6160</b>
--	------------------------	-----------------------------	---

# RNAV (GPS) RWY 31

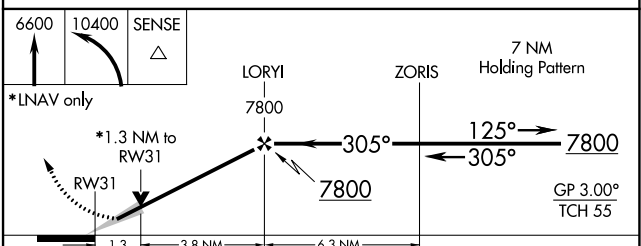
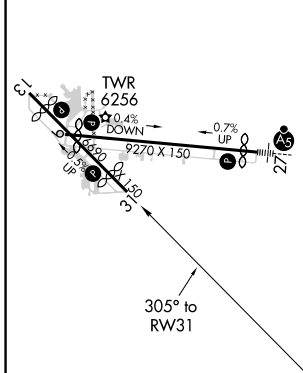
CHEYENNE RGNL/JERRY OLSON FLD (CYS)

RNP APCH.		MISSED APPROACH: Climb to 6600, then climbing left turn to 10400 direct SENSE and hold, continue climb-in-hold to 10400.	
<p><b>T</b> For uncompensated Baro-VNAV systems, LNAV/VNAV NA below -24°C or above 45°C.</p> <p>ASR/PAR</p>			

ATIS <b>134.425 278.3</b>	CHEYENNE APP CON* <b>124.55 263.075</b>	CHEYENNE TOWER* <b>118.7(CTAF) 257.8</b>	GND CON <b>121.9 254.275</b>	UNICOM <b>122.95</b>
------------------------------	--	---	---------------------------------	-------------------------



ELEV 6160	<b>D</b>	TDZE 6147
-----------	----------	-----------



CATEGORY	A	B	C	D
LPV DA		6397-3/4	250 (300-3/4)	
LNAV/VNAV DA		6458-7/8	311 (300-7/8)	
LNAV MDA	6600-1	453 (500-1)	6600-1 3/8	453 (500-1 3/8)
<b>C</b> CIRCLING	6640-1	480 (500-1)	6900-2 740 (800-2)	6920-2 1/2 760 (800-2 1/2)

NW-1, 03 OCT 2024 to 31 OCT 2024

NW-1, 03 OCT 2024 to 31 OCT 2024