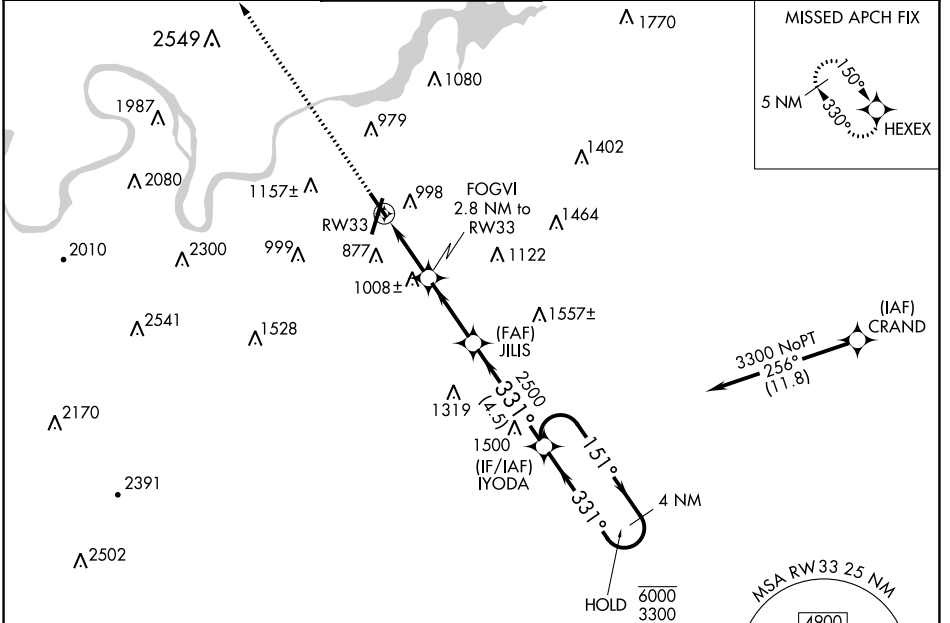


APP CRS 331°	Rwy Idg TDZE Apt Elev	5000 672 683
------------------------	-----------------------------	---

RNAV (GPS) RWY 33

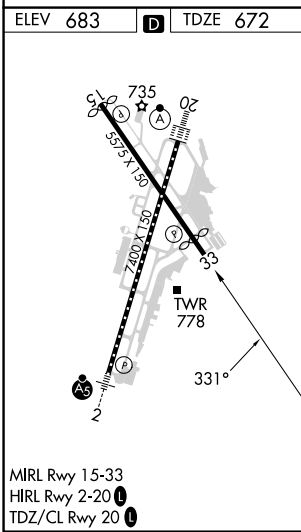
LOVELL FLD (CHA)

RNP APCH - GPS.		MISSED APPROACH: Climb to 4100 direct HEXEX and hold. * Missed approach requires minimum climb of 235 feet per NM to 3000.					
Straight-In Rwy 33 NA at night, Circling Rwy 15, 33 NA at night. Rwy 33 helicopter visibility reduction below 1 SM NA.		ATIS 119.85	CHATTANOOGA APP CON ★ 125.1 379.1	CHATTANOOGA TOWER ★ 118.3 (CTAF) 257.8	GND CON 121.7 348.6	CLNC DEL 120.95 348.6	UNICOM 122.95



SE-1, 31 OCT 2024 to 28 NOV 2024

SE-1, 31 OCT 2024 to 28 NOV 2024



4100	HEXEX	IYODA 4 NM Holding Pattern	
FOGVI 2.8 NM to RWY 33 RWY 33 JILIS 2500 IYODA 4 NM		151° → 6000 ← 331° 3300	
1600 ≤ 3.00° TCH 40 2.8 NM 2.8 NM 4.5 NM			
CATEGORY	A	B	C
LNAV MDA*	1260-1	588 (600-1)	1260-1¾ 588 (600-1¾)
LNAV MDA	1520-1 848 (900-1)	1520-1¼ 848 (900-1¼)	1520-2½ 848 (900-2½)
C CIRCLING	1520-1¼	837 (900-1¼)	1520-2½ 837 (900-2½) 1580-3 897 (900-3)