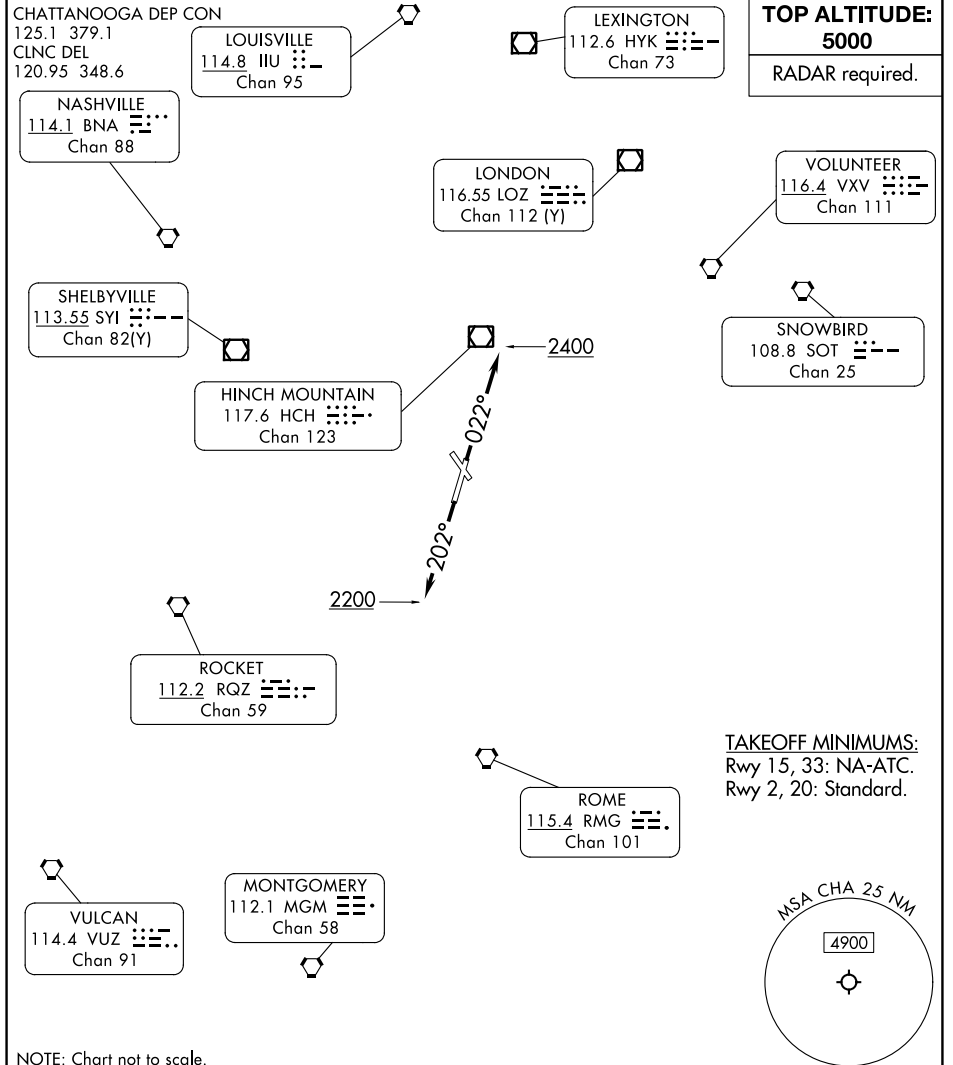


(CHA9.CHA) 24137

AL-79 (FAA)

LOVELL FLD (CHA)
CHATTANOOGA, TENNESSEE

CHATTANOOGA NINE DEPARTURE



TOP ALTITUDE:
5000
RADAR required.

TAKEOFF MINIMUMS:
Rwy 15, 33: NA-ATC.
Rwy 2, 20: Standard.

NOTE: Chart not to scale.

DEPARTURE ROUTE DESCRIPTION

TAKEOFF RUNWAY 2: Climb on heading 022° to 2400, thence....
TAKEOFF RUNWAY 20: Climb heading 202° to 2200, thence....

...expect RADAR vectors to join assigned route. Maintain 5000 or assigned lower altitude. Expect further clearance to filed altitude ten minutes after departure.

CHATTANOOGA NINE DEPARTURE
(CHA9.CHA) 16MAY24

CHATTANOOGA, TENNESSEE
LOVELL FLD (CHA)

SE-1, 31 OCT 2024 to 28 NOV 2024

SE-1, 31 OCT 2024 to 28 NOV 2024