

WAAS CH 86200 W36B	APP CRS 003°	Rwy Idg 10000 TDZE 707 Apt Elev 748
--	------------------------	--

RNAV (GPS) Y RWY 36C

CHARLOTTE/DOUGLAS INTL (CLT)

RNP APCH.

⚠ Circling NA at night. Simultaneous approach authorized. Use of FD or AP required during simultaneous operations. For uncompensated Baro-VNAV systems, LNAV/VNAV NA below -11°C or above 54°C. LNAV procedure NA during simultaneous operations.



MISSED APPROACH:
Climb to 3000 direct
TOMME and hold.

D-ATIS
ARR **121.15**
DEP **132.1**

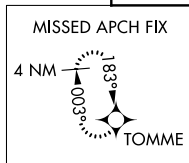
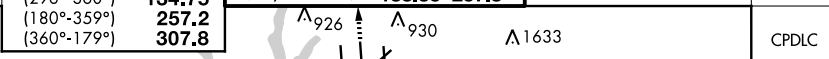
CHARLOTTE APP CON (001°-119°)	128.32
(120°-295°)	120.05
(296°-360°)	134.75
(180°-359°)	257.2
(360°-179°)	307.8

CHARLOTTE TOWER (Rwys 18L-36R)	118.1	257.8
(Rwy 18C-36C)	126.4	257.8
(Rwy 18R-36L)	133.35	257.8

GND CON	121.8	348.6	(WEST)	127.15
	121.9	348.6	(EAST)	348.6

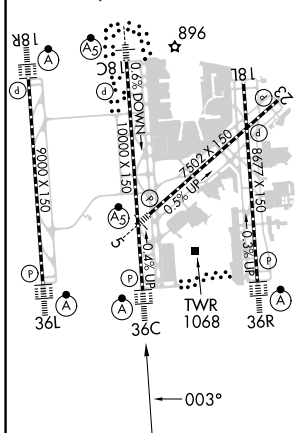
CLNC DEL
127.15
348.6

△
1847

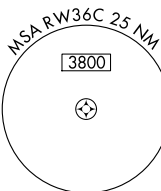


ELEV 748 **D** TDZE 707

HIRL all Rws
REIL Rws 18L and 23
TDZ/CL Rws 18R, 36L, 36C and 36R



3000 TOMME	VGSI and RNAV glidepath not coincident (VGSI Angle 3.00/TCH 72).				SOLMN		
	GLASI	NIVSE	MARJO	DENNE	HUNEX	KRISL	SOLMN
	2500	3000	4000	5000	6000	7000	8000
*LNAV only.	1.7	3.7 NM	1.6 NM	3.2 NM	3.2 NM	3.2 NM	3.2 NM
	RW36C						
	*1.7 NM to RW36C						
	GP 3.00°						
	TCH 57						
CATEGORY	A		B		C		D
LPV DA	907/18		200 (200-1/2)				
LNAV/VNAV DA	1229-1 3/8		522 (500-1 3/8)				
LNAV MDA	1320/40	613 (600-3/4)	1320-1 3/8	613 (600-1 3/8)			
C CIRCLING	1380-1	632 (700-1)	1500-2 1/4	752 (800-2 1/4)	1500-2 1/2	752 (800-2 1/2)	



SE-2, 03 OCT 2024 to 31 OCT 2024

SE-2, 03 OCT 2024 to 31 OCT 2024