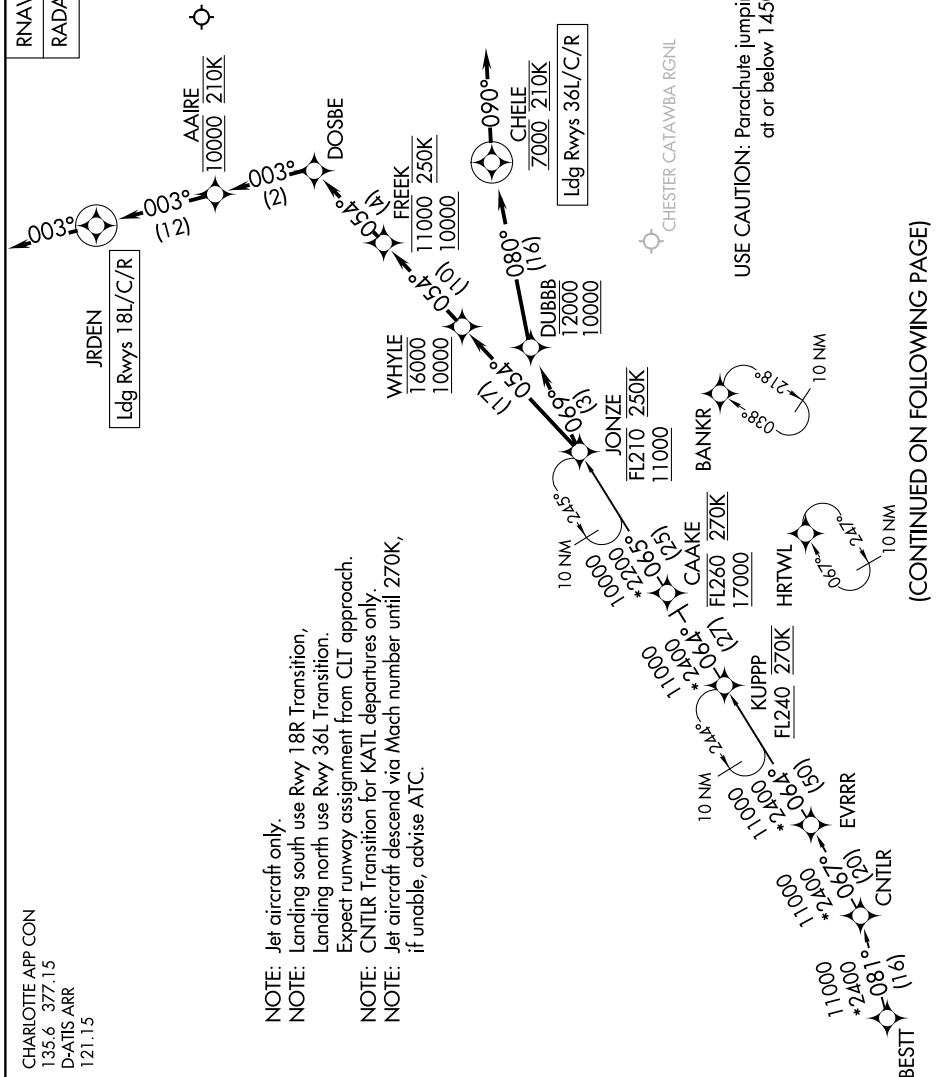


JONZE FIVE ARRIVAL (RNAV)

SE-2, 03 OCT 2024 to 31 OCT 2024

CHARLOTTE APP CON
135.6 377.15
D-ATIS ARR
121.15

RNAV 1 - DME/DME/IRU or GPS.
RADAR required.



- NOTE: Jet aircraft only.
- NOTE: Landing south use Rwy 18R Transition, Landing north use Rwy 36L Transition.
- NOTE: Expect runway assignment from CLT approach.
- NOTE: CNLTR Transition for KATL departures only.
- NOTE: Jet aircraft descend via Mach number until 270K, if unable, advise ATC.

(CONTINUED ON FOLLOWING PAGE)

NOTE: Chart not to scale.

SE-2, 03 OCT 2024 to 31 OCT 2024

JONZE FIVE ARRIVAL (RNAV)