

LOC/DME I-XUU 110.15 Chan 38(Y)	APP CRS 003°	Rwy Idg TDZE 9000 744 Apt Elev 748
--	------------------------	---

ILS or LOC RWY 36L

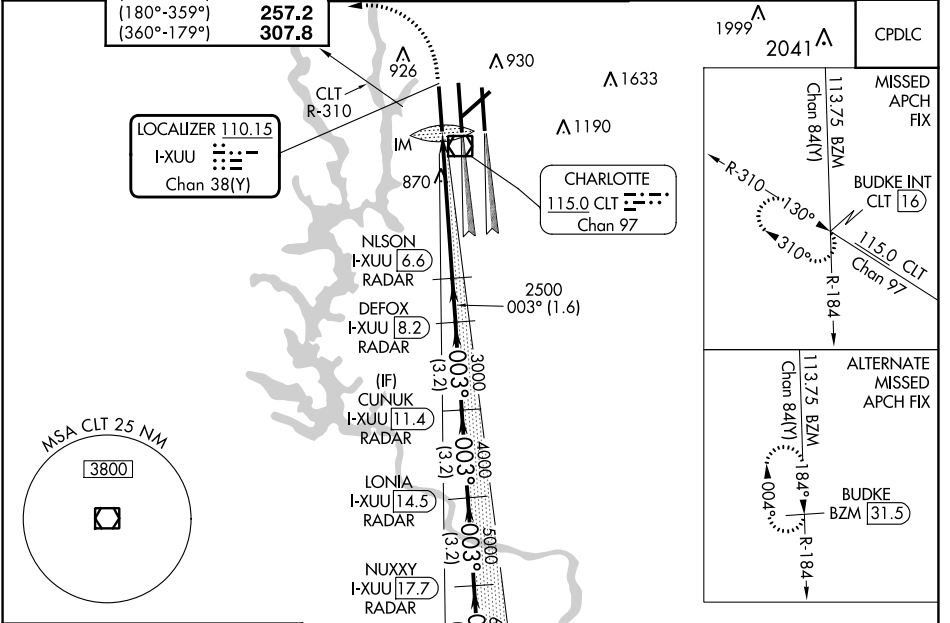
CHARLOTTE/DOUGLAS INTL (CLT)

⚠ Circling NA at night. Simultaneous approach authorized.
⚠ DME or RADAR required.

ALSF-2

MISSED APPROACH: Climb to 1200 then climbing left turn to 4000 on CLT VOR/DME R-310 to BUDKE/CLT 16 DME and hold.

D-ATIS ARR 121.15 DEP 132.1	CHARLOTTE APP CON (001°-119°) 128.32 (120°-295°) 120.05 (296°-360°) 134.75 (180°-359°) 257.2 (360°-179°) 307.8	CHARLOTTE TOWER (Rwys 18L-36R) 118.1 257.8 (Rwy 18C-36C) 126.4 257.8 (Rwy 18R-36L) 133.35 257.8	GND CON 121.8 348.6 (WEST) 121.9 348.6 (EAST)	CLNC DEL 127.15 348.6
---	--	---	---	---------------------------------

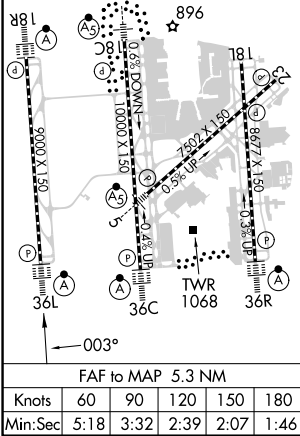


SE-2, 31 OCT 2024 to 28 NOV 2024

SE-2, 31 OCT 2024 to 28 NOV 2024

ELEV 748	D	TDZE 744
----------	----------	----------

HIRL all Rws
REIL Rws 18L and 23
TDZ/CL Rws 18R, 36L, 36C and 36R



RADAR REQUIRED

1200	4000	CLT R-310	BUDKE INT	VGSI and ILS glidepath not coincident (VGSI Angle 3.00/TCH 70).	WELET I-XUU 20.8 RADAR
*LOC only.					
I-XUU 1.3	I-XUU 2.5	NLSN I-XUU 6.6 RADAR	DEFOX I-XUU 8.2 RADAR	CUNUK I-XUU 11.4 RADAR	LONIA I-XUU 14.5 RADAR NUXXY I-XUU 17.7 RADAR
IM	2500	3000	4000	5000	6000
0.1	1.1 NM	4.1 NM	1.6 NM	3.2 NM	3.2 NM
GS 3.00° TCH 55					
CATEGORY A		CATEGORY B		CATEGORY C	
S-ILS 36L		944/18 200 (200-½)			
S-LOC 36L		1180/24 436 (500-½)		1180/40 436 (500-¾)	
C CIRCLING		1380-1 632 (700-1)		1500-2¼ 752 (800-2¼) 1500-2½ 752 (800-2½)	