

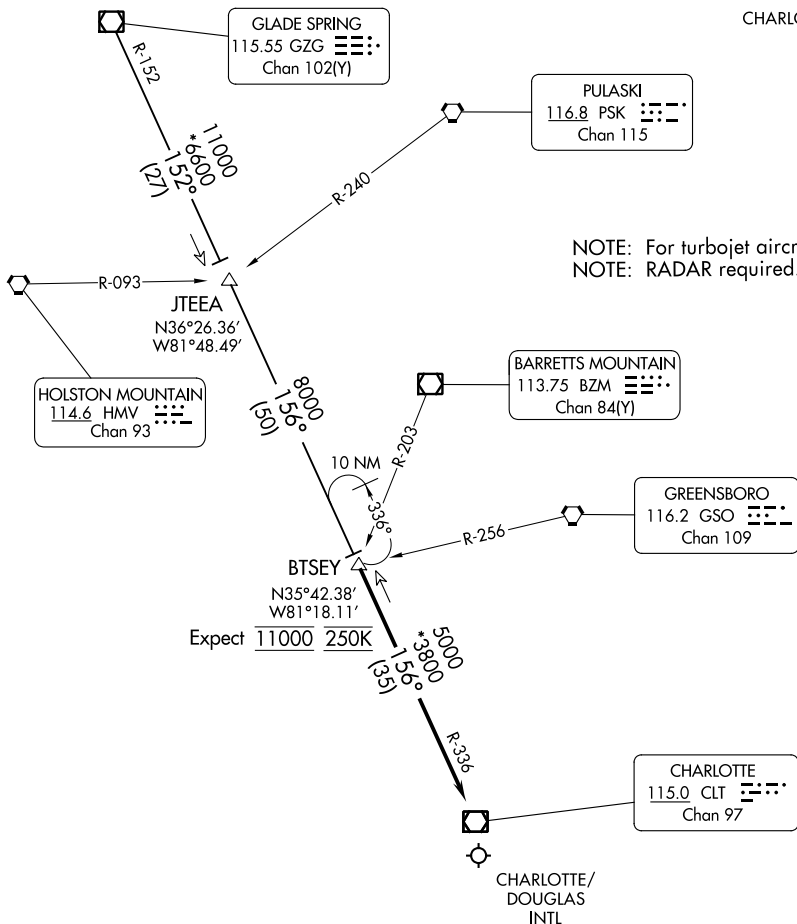
(BTSEY.BTSEY2) 24081

BTSEY TWO ARRIVAL

AL-78 (FAA)

CHARLOTTE/DOUGLAS INTL (CLT)
CHARLOTTE, NORTH CAROLINA

CHARLOTTE APP CON
125.35 257.2
D-ATIS ARR
121.15



NOTE: Chart not to scale.

ARRIVAL ROUTE DESCRIPTION

GLADE SPRINGS TRANSITION (GZG.BTSEY2): From over GZG VOR/DME on GZG R-152 to JTEEA, then on CLT R-336 to BTSEY. Thence

. . . . from BTSEY on CLT R-336 to CLT VOR/DME. Expect RADAR vectors to final approach course prior to CLT VOR/DME.

BTSEY TWO ARRIVAL

(BTSEY.BTSEY2) 31MAR16

CHARLOTTE, NORTH CAROLINA
CHARLOTTE/DOUGLAS INTL (CLT)

SE-2, 31 OCT 2024 to 28 NOV 2024

SE-2, 31 OCT 2024 to 28 NOV 2024