

CHARLESTON, SOUTH CAROLINA

# HI-VOR or TACAN RWY 15

VORTAC CHS <b>113.5</b> Chan <b>82</b>	APCH CRS <b>157°</b>	Rwy Idg TDZE Arprt Elev	<b>9001</b> <b>43</b> <b>46</b>
--	-------------------------	-------------------------------	---------------------------------------

[USAF]

CHARLESTON AFB/INTL (KCHS)

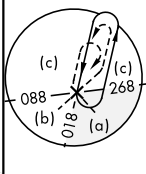
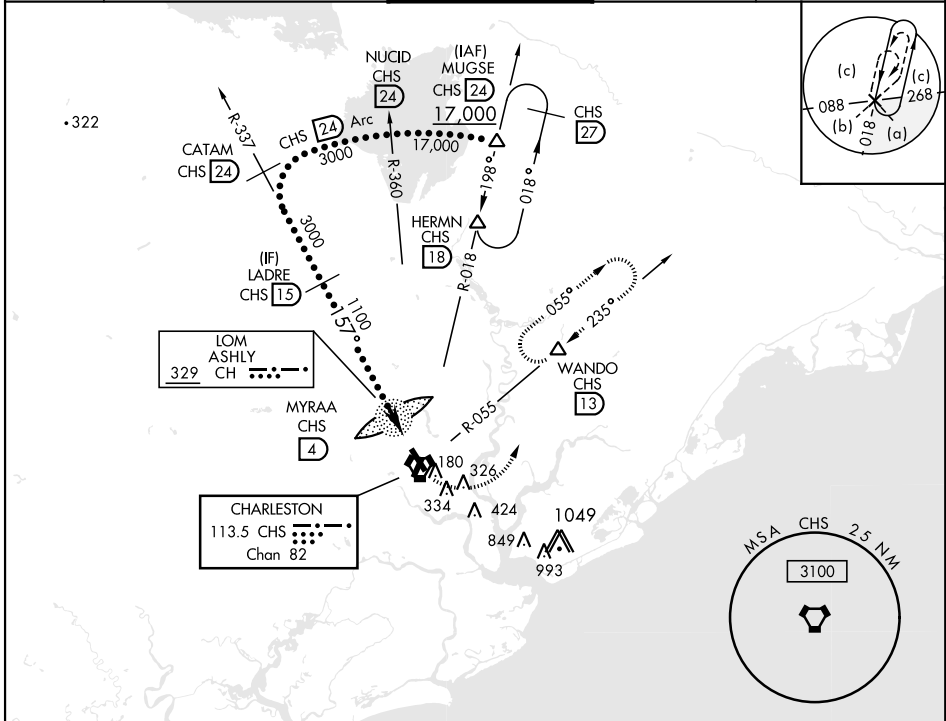
DME required



MISSED APPROACH: Climb to 500 then climbing left turn to 3500 on CHS VORTAC R-055 to WANDO/CHS 13 DME and hold, continue climb-in-hold to 3500.

▼ \* When ALS inop, increase CAT CDE RVR to 60, vis to 1½ miles.

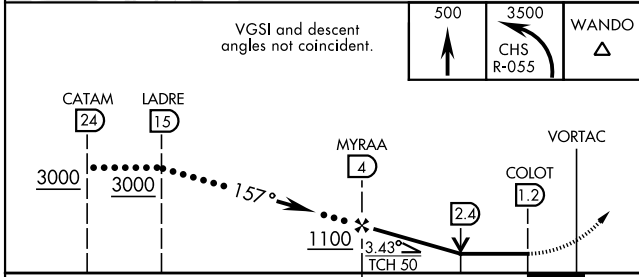
ATIS <b>124.75</b>	APP CON <b>120.7 306.925</b> (151° - 330°) <b>121.275 379.925</b> (331° - 150°)	TOWER <b>126.0 239.0</b>	GND CON <b>121.9 348.6</b>	CLNC DEL <b>127.325 291.65</b>
-----------------------	---	-----------------------------	-------------------------------	-----------------------------------



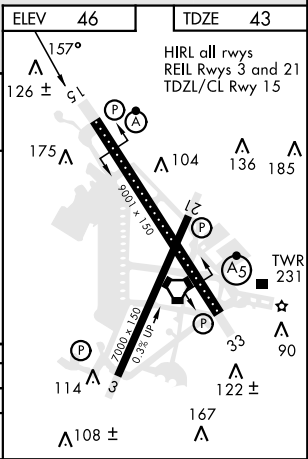
SE-2, 11 JUL 2024 to 08 AUG 2024

SE-2, 11 JUL 2024 to 08 AUG 2024

EMERG SAFE ALT 100 NM 3200



CATEGORY	C	D	E
S-15*	460/40	417	(500-3)
CIRCLING	540-1½ 494 (500-1½)	740-2¼ 694 (700-2¼)	740-2½ 694 (700-2½)



CHARLESTON, SOUTH CAROLINA

32°54'N-80°02'W

CHARLESTON AFB/INTL (KCHS)

Amtd 4A 17JUN21

# HI-VOR or TACAN RWY 15