

VORTAC IWA 113.3 Chan 80	APP CRS 302°	Rwy Idg	30C	30R
		TDZE	10201	9301
		1380	1382	
		Apt Elev	1384	1384

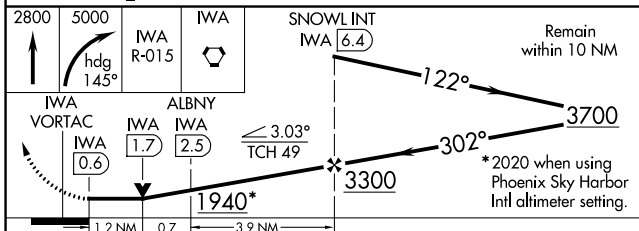
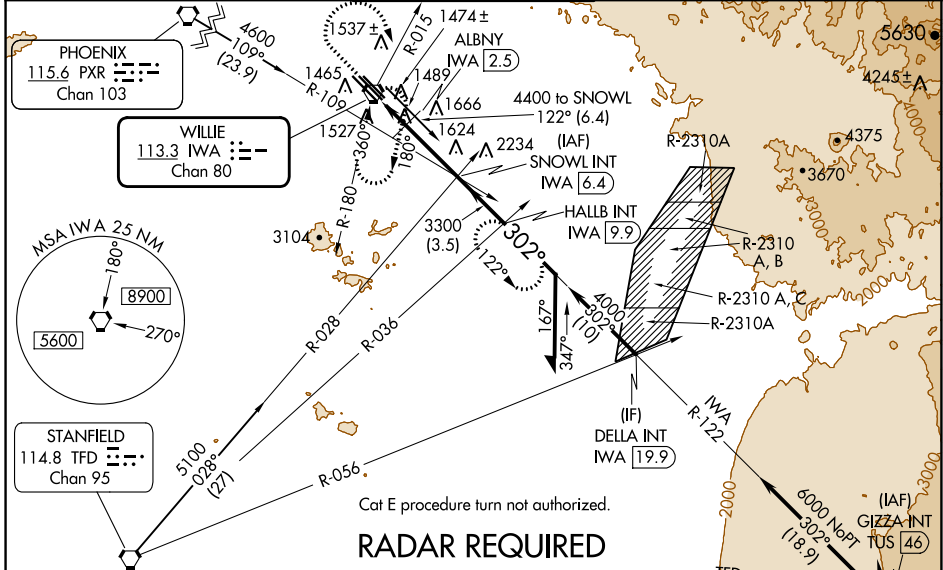
VOR or TACAN RWY 30C

PHOENIX-MESA GATEWAY (IWA)

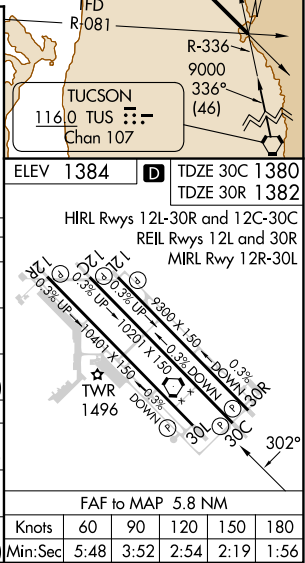
⚠ When local altimeter setting not received, use Phoenix Sky Harbor Intl altimeter setting and increase all MDA 80 feet, increase S-30C, SIDESTEP 30R, and Circling Cats C/D/E visibility ¼ SM.

MISSED APPROACH: Climb to 2800 then climbing right turn to 5000 via heading 145° and IWA VORTAC R-015 to IWA VORTAC and hold, continue climb-in-hold to 5000 (TACAN aircraft continue via IWA VORTAC R-122 to HALLB INT/IWA 9.9 DME and hold, continue climb-in-hold to 5000, hold SE, LT, 302° inbound).

ATIS ★ 133.5 270.275	PHOENIX APP CON 124.9 353.8	GATEWAY TOWER ★ 120.6 (CTAF) 289.4	GND CON 128.25 275.8	CLNC DEL 135.05
--------------------------------	---------------------------------------	----------------------------------------------	--------------------------------	---------------------------



CATEGORY	A	B	C	D	E
S-30C	1940-1 560 (600-1)	560 (600-1)	1940-1½ 560 (600-1½)	1940-1¾ 560 (600-1¾)	1940-2 560 (600-2)
SIDESTEP 30R	1940-1 558 (600-1)	558 (600-1)	1940-1½ 558 (600-1½)	1940-2 558 (600-2)	558 (600-2)
CIRCLING	1940-1 556 (600-1)	556 (600-1)	1940-1½ 556 (600-1½)	2000-2 616 (700-2)	2020-2¼ 636 (700-2¼)
DME MINIMUMS					
S-30C	1800-1 420 (500-1)	420 (500-1)	1800-1¼ 420 (500-1¼)	1800-1½ 420 (500-1½)	1800-1½ 420 (500-1½)
SIDESTEP 30R	1800-1 418 (500-1)	418 (500-1)	1800-1½ 418 (500-1½)	1800-2 418 (500-2)	418 (500-2)
CIRCLING	1880-1 496 (500-1)	496 (500-1)	1880-1½ 496 (500-1½)	2000-2 616 (700-2)	2020-2¼ 636 (700-2¼)



SW-4, 03 OCT 2024 to 31 OCT 2024

SW-4, 03 OCT 2024 to 31 OCT 2024