

WAAS CH <b>62911</b> <b>W30A</b>	APP CRS <b>303°</b>	Rwy Idg <b>10201</b> TDZE <b>1380</b> Apt Elev <b>1384</b>
--	------------------------	--

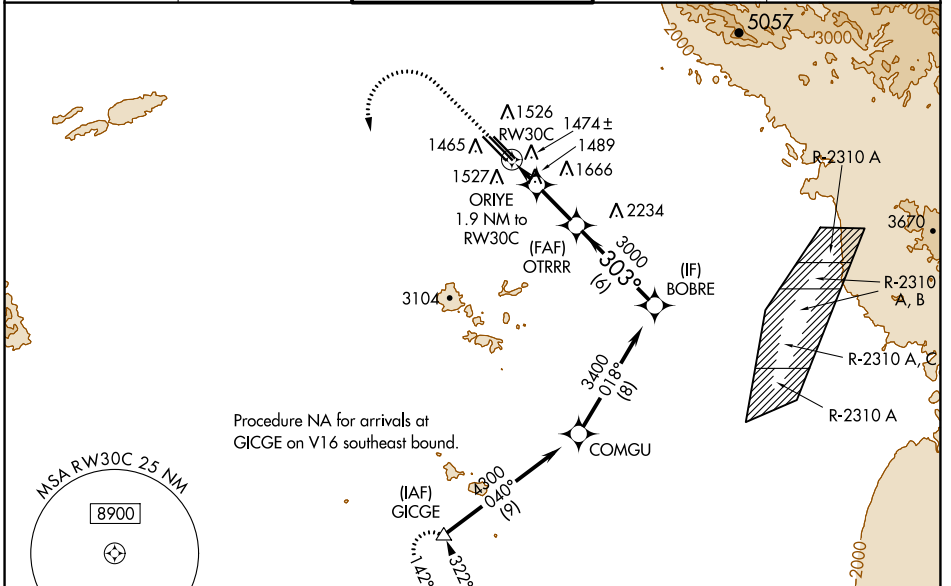
# RNAV (GPS) Y RWY 30C

PHOENIX-MESA GATEWAY (IWA)

**⚠** For uncompensated Baro-VNAV systems, LNAV/VNAV NA below -2°C (29°F) or above 35°C (95°F). DME/DME RNP-0.3 NA. When local altimeter setting not received, use Phoenix Sky Harbor Intl altimeter setting and increase LPV DA to 1660 feet, LNAV/VNAV DA to 1710 feet and all MDA 80 feet; increase LPV all Cats visibility 1/8 SM, increase LNAV/VNAV all Cats, LNAV Cats C, D and E, and Circling Cats D, E visibility 1/4 SM. VDP and Baro-VNAV NA with Phoenix Sky Harbor Intl altimeter setting.

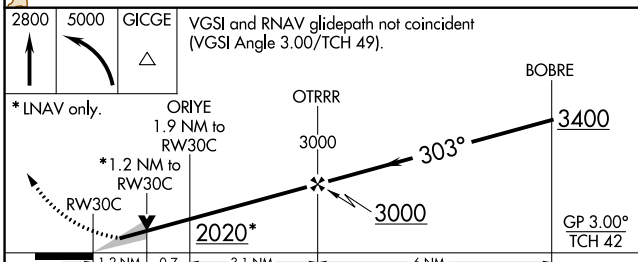
**MISSED APPROACH:**  
Climb to 2800 then climbing left turn to 5000 direct GICGE and hold.

ATIS * <b>133.5 270.275</b>	PHOENIX APP CON <b>124.9 353.8</b>	GATEWAY TOWER * <b>120.6 (CTAF) 289.4</b>	GND CON <b>128.25 275.8</b>	CLNC DEL <b>135.05</b>
--------------------------------	---------------------------------------	--	--------------------------------	---------------------------



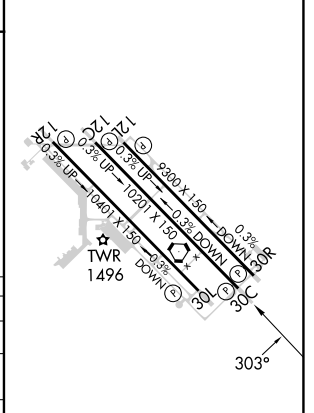
SW-4, 11 JUL 2024 to 08 AUG 2024

SW-4, 11 JUL 2024 to 08 AUG 2024



ELEV 1384	<b>D</b> TDZE 1380
-----------	--------------------

CATEGORY	A	B	C	D	E
LPV DA		1580-3/4	200 (200-3/4)		
LNAV/VNAV DA		1630-7/8	250 (300-7/8)		
LNAV MDA	1800-1	420 (500-1)	1800-1 1/8	420 (500-1 1/8)	
CIRCLING	1880-1	496 (500-1)	1880-1 1/2	2000-2	2040-2 1/4
			496 (500-1 1/2)	616 (700-2)	656 (700-2 1/4)



MIRL Rwy 12R-30L  
HIRL Rwys 12L-30R and 12C-30C  
REIL Rwys 12L and 30R