

APP CRS	Rwy Idg	10201
303°	TDZE	1380
	Apt Elev	1384

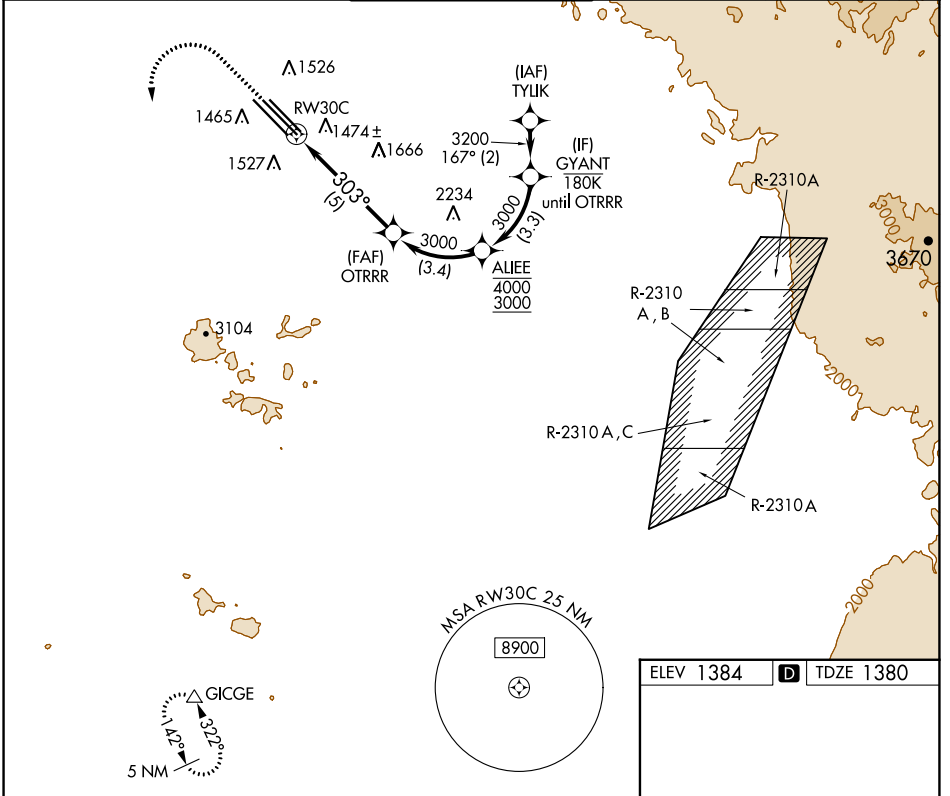
RNAV (RNP) Z RWY 30C

PHOENIX-MESA GATEWAY (IWA)

▼ For uncompensated Baro-VNAV systems, procedure NA below -17°C (2°F) or above 54°C (130°F). GPS and RF required.

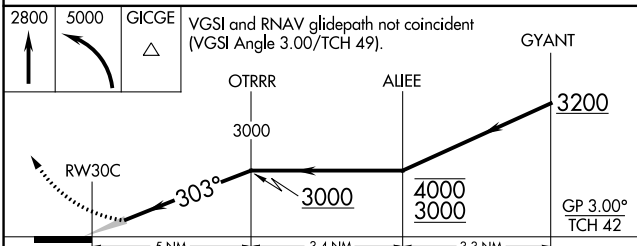
MISSED APPROACH: Climb to 2800 then climbing left turn to 5000 direct GICGE and hold.

ATIS ★ 133.5 270.275	PHOENIX APP CON 124.9 353.8	GATEWAY TOWER ★ 120.6 (CTAF) 289.4	GND CON 128.25 275.8	CLNC DEL 135.05
--------------------------------	---------------------------------------	--	--------------------------------	---------------------------



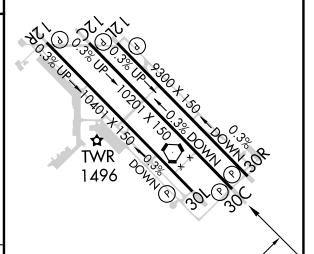
SW-4, 03 OCT 2024 to 31 OCT 2024

SW-4, 03 OCT 2024 to 31 OCT 2024



ELEV 1384	D TDZE 1380
-----------	--------------------

CATEGORY	A	B	C	D
RNP 0.21 DA		1637-7/8	257 (300-7/8)	
RNP 0.30 DA		1711-1 1/8	331 (400-1 1/8)	



MIRL Rwy 12R-30L
HIRL Rwy 12L-30R and 12C-30C
REIL Rwy 12L and 30R