

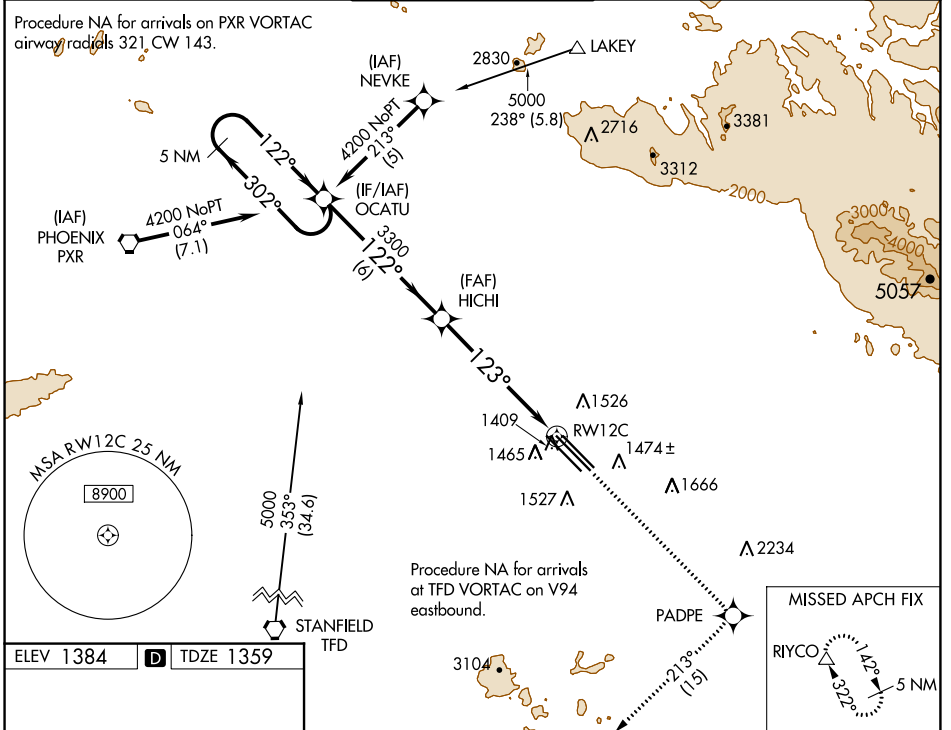
WAAS CH <b>58200</b> <b>W12A</b>	APP CRS <b>123°</b>	Rwy Idg <b>10201</b> TDZE <b>1359</b> Apt Elev <b>1384</b>
--	------------------------	--

# RNAV (GPS) RWY 12C

PHOENIX-MESA GATEWAY (IWA)

**⚠** DME/DME RNP-0.3 NA.  
**⚠** For uncompensated Baro-VNAV systems LNAV/VNAV NA below -17°C (2°F) or above 46°C (115°F).  
 MISSED APPROACH: Climb to 5000 direct PADPE and on 213° track to RIYCO and hold.

ATIS ★ <b>133.5 270.275</b>	PHOENIX APP CON <b>124.9 353.8</b>	GATEWAY TOWER ★ <b>120.6 (CTAF) 289.4</b>	GND CON <b>128.25 275.8</b>	CLNC DEL <b>135.05</b>
--------------------------------	---------------------------------------	--	--------------------------------	---------------------------



ELEV 1384 **D** TDZE 1359

MIRL Rwy 12R-30L  
 HIRL Rwys 12L-30R and 12C-30C  
 REIL Rwys 12L and 30R

5 NM Holding Pattern	OCATU	5000	PADPE	213° tr	RIYCO
4200 ← 302°	→ 122°	122°	3300	123°	1.1 NM to RWY 12C
GP 3.00°	TCH 50	6 NM	4.8 NM	1.1	
CATEGORY	A	B	C	D	E
LPV DA	1609-1 250 (300-1)				
LNAV/VNAV DA	1686-1¼ 327 (400-1¼)				
LNAV MDA	1740-1 381 (400-1)		1740-1¼ 381 (400-1¼)		
CIRCLING	1840-1¼	456 (500-1¼)	1880-1½	2000-2	2020-2¼
			496 (500-1½)	616 (700-2)	636 (700-2¼)

SW-4, 08 AUG 2024 to 05 SEP 2024

SW-4, 08 AUG 2024 to 05 SEP 2024