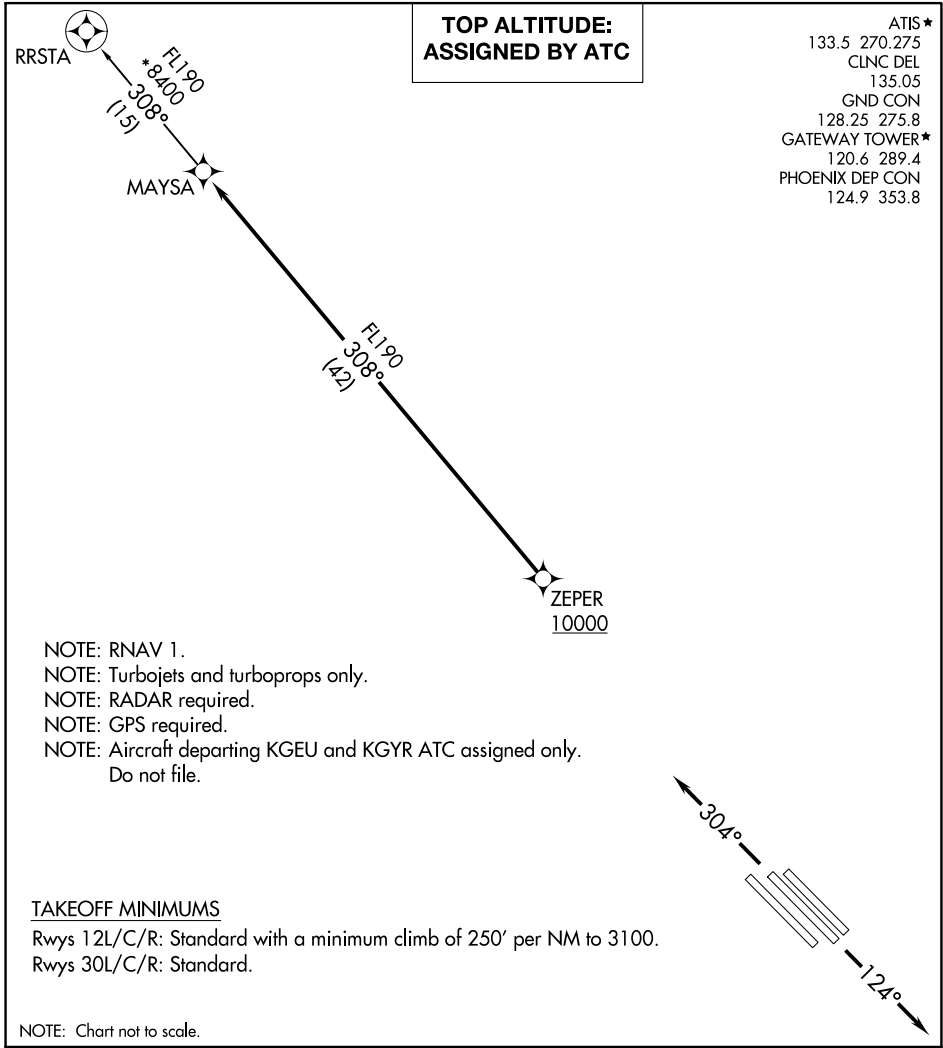


(MAYSA7.MAYSA) 20142

# MAYSA SEVEN DEPARTURE (RNAV) AL-74 (FAA)

PHOENIX-MESA GATEWAY (IWA)  
PHOENIX, ARIZONA



SW-4, 08 AUG 2024 to 05 SEP 2024

SW-4, 08 AUG 2024 to 05 SEP 2024



## DEPARTURE ROUTE DESCRIPTION

TAKEOFF RUNWAYS 12L/C/R: Climb on heading 124° or as assigned by ATC. Thence. . .

TAKEOFF RUNWAYS 30L/C/R: Climb on heading 304° or as assigned by ATC. Thence. . .

. . . expect RADAR vectors to cross ZEPER at or above 10000, then on track 308° to MAYSA, then on RRSTA TRANSITION. Maintain ATC assigned altitude, expect filed altitude 3 minutes after departure.

RRSTA TRANSITION (MAYSA7.RRSTA)

**MAYSA SEVEN DEPARTURE (RNAV)**  
(MAYSA7.MAYSA) 21MAY20

PHOENIX, ARIZONA  
PHOENIX-MESA GATEWAY (IWA)