

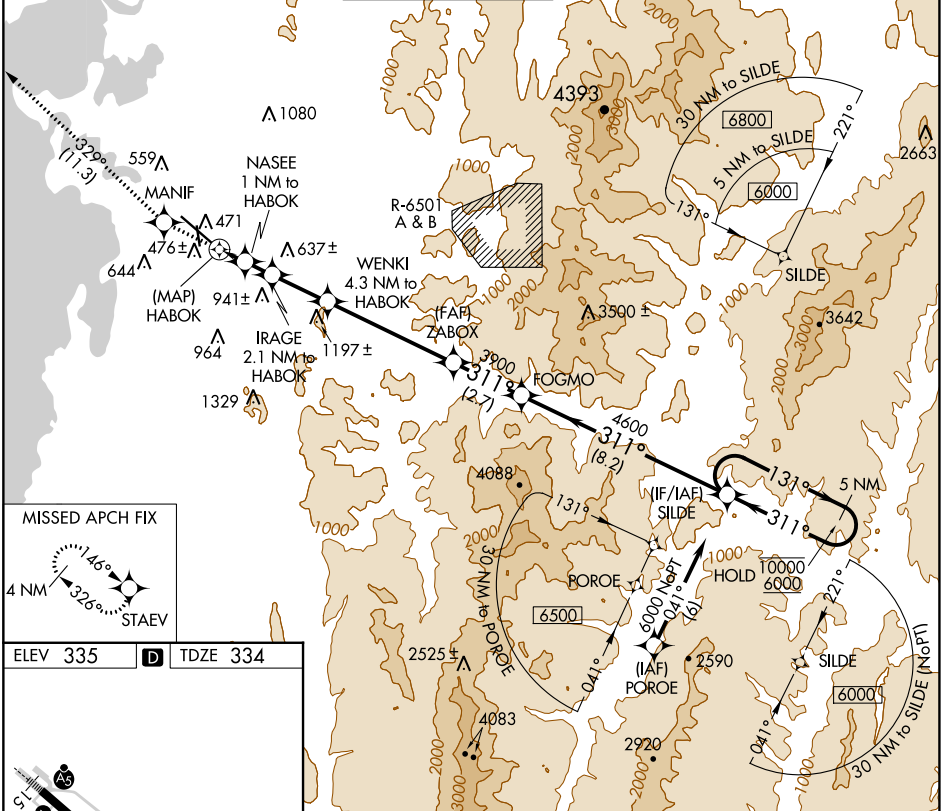
APP CRS <b>311°</b>	Rwy Idg <b>7819</b>
TDZE <b>334</b>	Apt Elev <b>335</b>

# RNAV (GPS) Y RWY 33

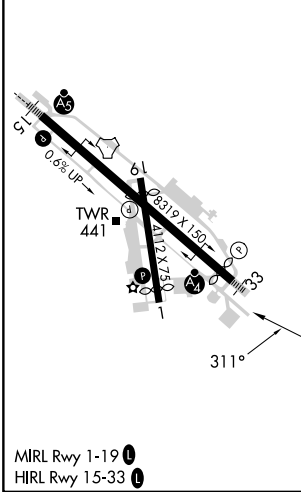
PATRICK LEAHY BURLINGTON INTL (BTV)

RNP APCH.	<p><b>∇</b> Circling Rwy 1 NA at night.</p> <p><b>▲</b> Rwy 33 helicopter visibility reduction below ¾ SM NA.</p> <p><b>☁</b> -10°C For inop ALS, increase LNAV Cat C visibility to RVR 6000.</p>	MALSIF	<p><b>≡</b> MISSED APPROACH: Climb to 3000 direct MANIF and on track 329° to STAEV and hold.</p>
-----------	---	--------	--

ATIS <b>123.8 269.9</b>	BURLINGTON APP CON * <b>121.1 278.8</b>	BURLINGTON TOWER * <b>118.3 (CTAF) 0 257.8</b>	GND CON <b>126.3 348.6</b>	CLNC DEL <b>119.15</b>	UNICOM <b>122.95</b>
----------------------------	--	---	-------------------------------	---------------------------	-------------------------



ELEV 335	<b>D</b>	TDZE 334
----------	----------	----------



3000	MANIF	tr 329°	STAEV	WENKI 4.3 NM to HABOK	ZABOX	FOGMO	SILDE	5 NM Holding Pattern
			IRAGE 2.1 NM to HABOK					
	HABOK		NASEE 1 NM to HABOK					
			TCH 55	940	1320	2120	3900	4600
			3.47°					311°
								131°
								6000
								10000
								VGSI and descent angles not coincident (VGSI Angle 3.20/TCH 53).
								0.5   1.1 NM   2.2 NM   5 NM   2.7 NM   8.2 NM

CATEGORY	A	B	C	D	E
LNAV MDA	740/40	406 (500-¾)	740/50 406 (500-1)	740/60	406 (500-1½)
<b>C</b> CIRCLING	840-1 505 (600-1)	860-1 525 (600-1)	1200-2½ 865 (900-1½)	1380-3 1045 (1100-3)	1500-3 1165 (1200-3)

NE-1, 11 JUL 2024 to 08 AUG 2024

NE-1, 11 JUL 2024 to 08 AUG 2024