

LOC/DME I-VOE <b>110.3</b> Chan 40	APP CRS <b>326°</b>	Rwy Idg TDZE Apt Elev	<b>7819</b> <b>334</b> <b>335</b>
--	------------------------	-----------------------------	---

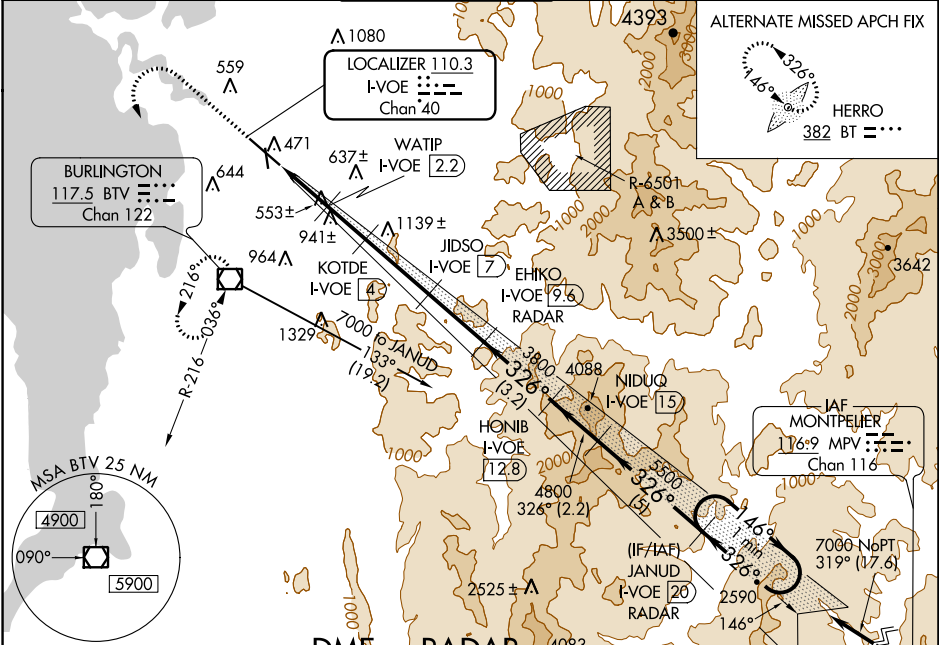
# ILS or LOC/DME RWY 33

PATRICK LEAHY BURLINGTON INTL (BTV)

**⚠** Circling to Rwy 1 NA at night. For inop ALS, increase S-ILS 33 Cat A/B visibility to RVR 4500 and S-LOC 33 Cat E to 2 SM.  
Rwy 33 helicopter visibility reduction below RVR 4000 NA.  
**❄** -10°C Autopilot coupled approaches NA.

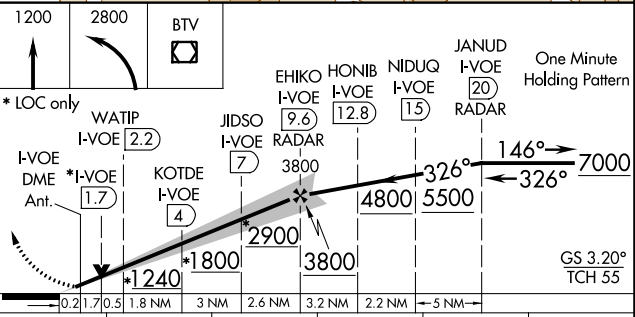
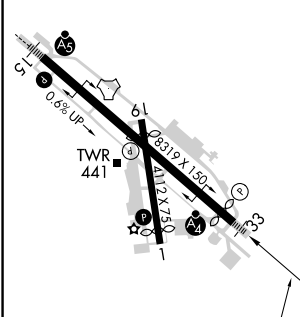
**MALSF** MISSED APPROACH: Climb to 1200 then climbing left turn to 2800 direct BTV VOR/DME and hold, continue climb-in-hold to 2800.

ATIS <b>123.8 269.9</b>	BURLINGTON APP CON * <b>121.1 278.8</b>	BURLINGTON TOWER * <b>118.3 (CTAF) 0 257.8</b>	GND CON <b>126.3 348.6</b>	CLNC DEL <b>119.15</b>	UNICOM <b>122.95</b>
----------------------------	--	---	-------------------------------	---------------------------	-------------------------



ELEV 335	<b>D</b>	TDZE 334
----------	----------	----------

## DME or RADAR REQUIRED



CATEGORY	A	B	C	D	E
S-ILS 33	608/40	274 (300-¾)	608/50	274 (300-1)	NA
S-LOC 33	1020/40	686 (700-¾)	1020-1¾	686 (700-1¾)	
<b>C</b> CIRCLING	1020-1	685 (700-1)	1220-2¾ 885 (900-2¾)	1380-3	1045 (1100-3)

MIRL Rwy 1-19 **0**  
HIRL Rwy 15-33 **0**

FAF to MAP 9.8 NM

Knots	60	90	120	150	180
Min:Sec	9:48	6:32	4:54	3:55	3:16

NE-1, 03 OCT 2024 to 31 OCT 2024

NE-1, 03 OCT 2024 to 31 OCT 2024