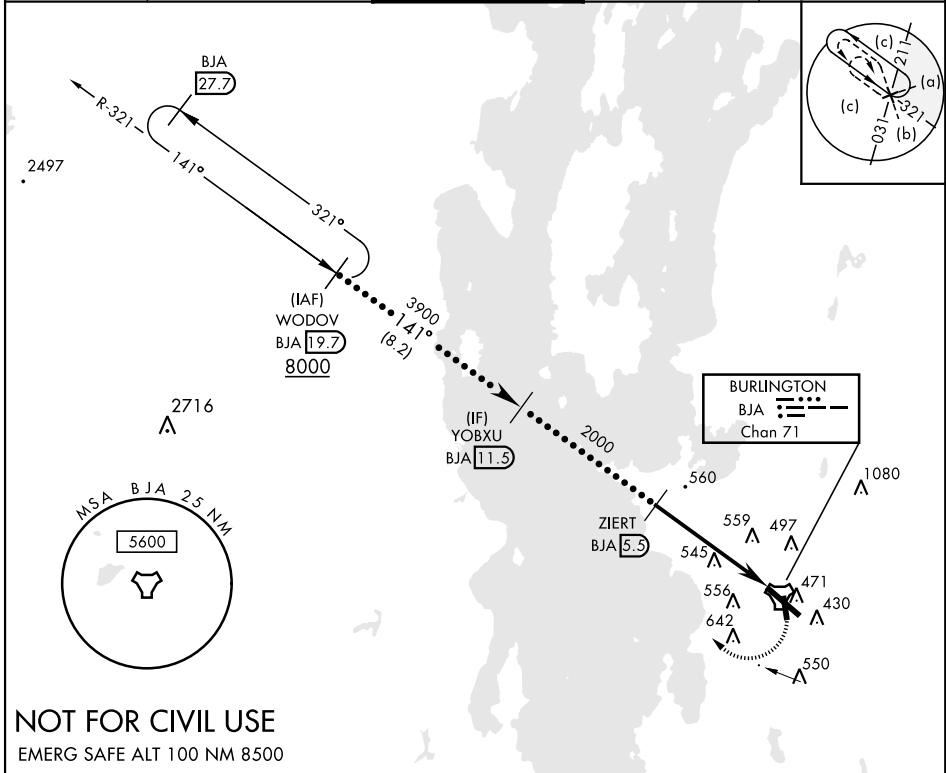


# HI-TACAN RWY 15

TACAN BJA Chan <b>71</b>	APCH CRS <b>141°</b>	Rwy ldg TDZE <b>7820</b> 326 Arprt Elev <b>335</b>	AL-70 [USAF]	PATRICK LEAHY BURLINGTON INTL (KBTV)
<b>▼</b> * When ALS inop, increase CAT CDE vis to 1 3/8 mile. <b>▲</b>			MALSRL <b>A5</b>	MISSED APPROACH: Climbing right turn to 8000 on BJA R-321 to WODOV / BJA 19.7 DME and hold, continue climb-in-hold to 8000.

ATIS <b>123.8 269.9</b>	APP CON <b>121.1 278.8</b>	TOWER ★ <b>118.3 (CTAF) 0257.8</b>	GND CON <b>126.3 348.6</b>	CLNC DEL <b>119.15</b>
----------------------------	-------------------------------	---------------------------------------	-------------------------------	---------------------------



**NOT FOR CIVIL USE**  
EMERG SAFE ALT 100 NM 8500

WODOV BJA 19.7	YOBXU BJA 11.5	ZIERT BJA 5.5	TACAN	ELEV 335	TDZE 326
				Rwy 1 ldg 3386' Rwy 19 ldg 3386' Rwy 15 ldg 7820' Rwy 33 ldg 7819' TWR 441 MIRL Rwy 1-19 HIRL Rwy 15-33	
CATEGORY	C	D	E		
S-15*	820/50	494	(500-1)		
CIRCLING	1220-2 3/4 885 (900-2 3/4)	1380-3 1045 (1100-3)	1500-3 1165 (1200-3)		

# HI-TACAN RWY 15

NE-1, 03 OCT 2024 TO 31 OCT 2024

NE-1, 03 OCT 2024 TO 31 OCT 2024