

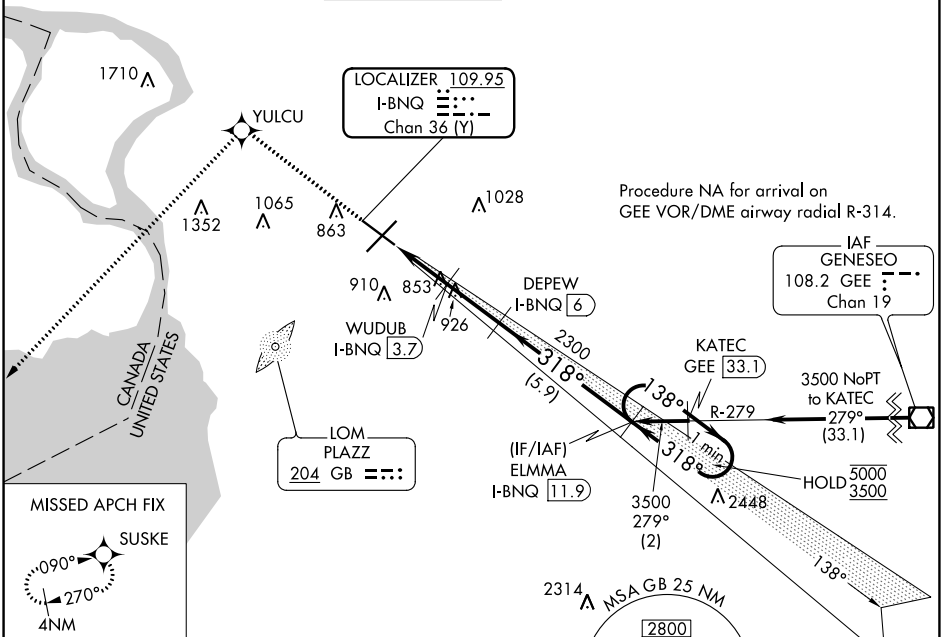
LOC/DME I-BNQ 109.95 Chan 36 (Y)	APP CRS 318°	Rwy Idg TDZE Apt Elev 6121 713 727
--	------------------------	--

ILS or LOC RWY 32

BUFFALO NIAGARA INTL (BUF)

DME required. RNP APCH-GPS.		MALSR 	MISSED APPROACH: Climb to 3000 direct YULCU and on track 235° to SUSKE and hold.	
-----------------------------	--	-----------	--	--

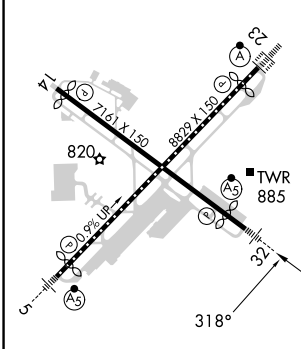
D-ATIS 135.35	BUFFALO APP CON 126.15 263.125	BUFFALO TOWER 120.5 257.8	GND CON 133.2 257.8	CLNC DEL 124.7 257.8	CPDLC
-------------------------	--	-------------------------------------	-------------------------------	--------------------------------	-------



NE-2, 31 OCT 2024 to 28 NOV 2024

NE-2, 31 OCT 2024 to 28 NOV 2024

ELEV 727	D	TDZE 713
-----------------	----------	-----------------



REIL Rwy 14
TDZ/CL Rws 5 and 23
HIRL Rws 5-23 and 14-32

3000	YULCU	tr 235°	SUSKE	DEPEW I-BNQ (6)	ELMMA I-BNQ (11.9)	One Minute Holding Pattern
				WUDUB I-BNQ (3.7)	2300	138° → 5000 ← 318° 3500
				I-BNQ (2.3)	1540	GS 3.00° TCH 54
				I-BNQ (1.2)	2300	
					1.1 NM	1.4 NM
					2.3 NM	5.9 NM
CATEGORY	A		B		C	
S-ILS 32	913-1/2		200 (200-1/2)			
S-LOC 32	1120-1/2 407 (400-1/2)		1120-3/4 407 (400-3/4)			
C CIRCLING	1200-1 473 (500-1)		1220-1 1/2 493 (500-1 1/2)		1340-2 613 (700-2)	