

APP CRS	Rwy Idg	8994
318°	TDZE	4462
	Apt Elev	4473

RNAV (GPS) Y RWY 30

BOZEMAN YELLOWSTONE INTL (BZN)

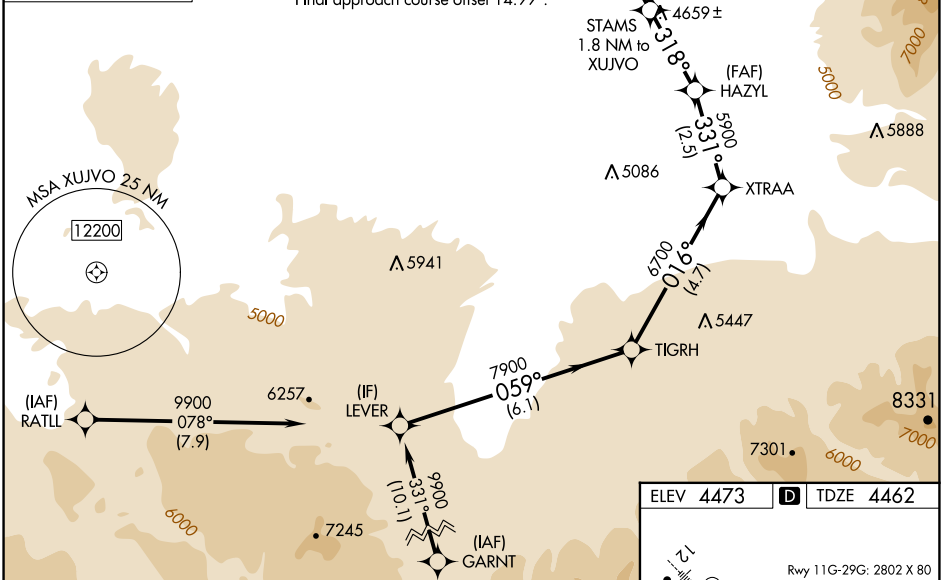
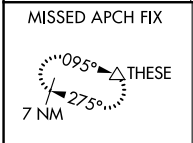
RNP APCH - GPS.

⚠ For uncompensated Baro-VNAV systems, LNAV/VNAV NA below -30°C or above 54°C. Circling NA to Rwy's 3, 11, 21 and 29.

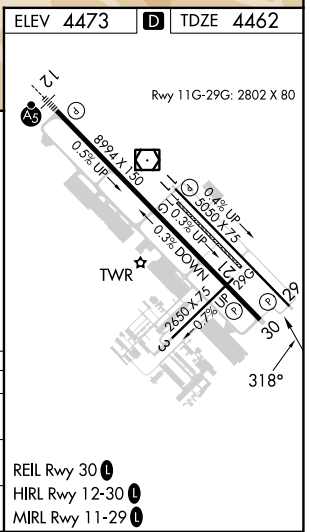
❄ -22°C

MISSED APPROACH: Climb to 5000 then climbing left turn to 10000 direct THESE and hold, continue climb-in-hold to 10000.

ATIS 135.425	BIG SKY APP CON ★ 118.975 226.675	BOZEMAN TOWER ★ 118.2 (CTAF) 0	GND CON 121.8	UNICOM 122.95
------------------------	---	--	-------------------------	-------------------------



5000	10000	THESE			
↑	↶	△			
STAMS 1.8 NM to XUJVO	HAZYL 5900	XTRAA	TIGRH	LEVER 9900	
1.2 NM to XUJVO	5900	6700	7900	9900	
5120	5900	6700	7900	9900	
1.2 NM	0.6	2.3 NM	2.5 NM	4.7 NM	6.1 NM
CATEGORY	A	B	C	D	
LNAV/VNAV	DA	4880-1½	418 (500-1½)		
LNAV MDA	4880-1	418 (500-1)	4880-1½	418 (500-1½)	
CIRCLING	4940-1 467 (500-1)	4960-1 487 (500-1)	5160-2 687 (700-2)	5320-2¾ 847 (900-2¾)	



NW-1, 31 OCT 2024 to 28 NOV 2024

NW-1, 31 OCT 2024 to 28 NOV 2024