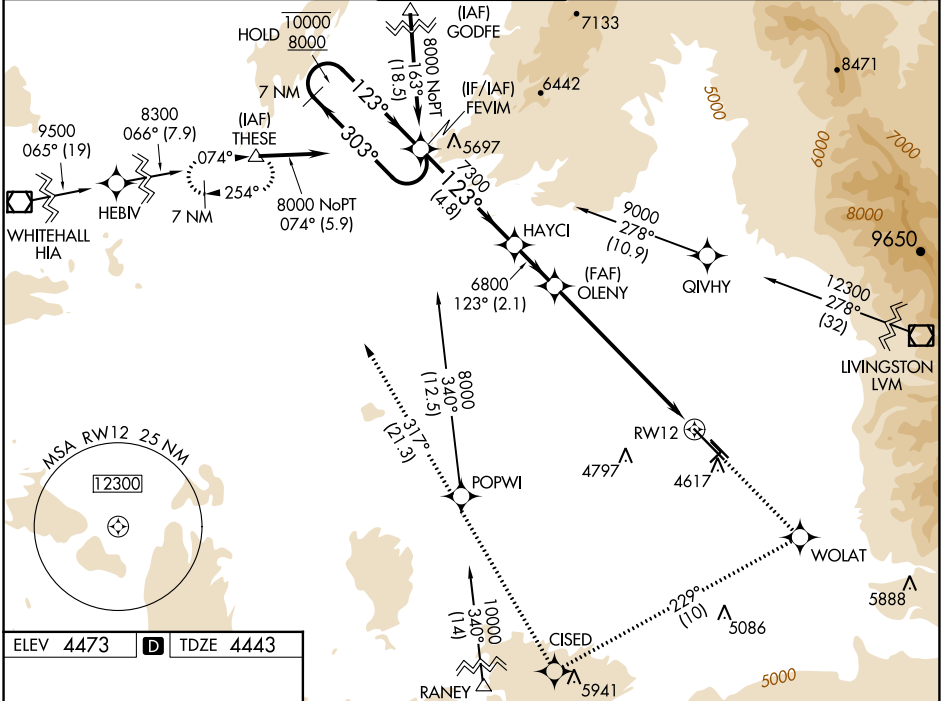


WAAS CH 72816 W12A	APP CRS 123°	Rwy Idg TDZE Apt Elev	8994 4443 4473
--	------------------------	-----------------------------	---

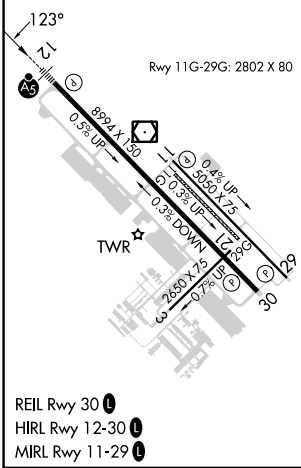
RNAV (GPS) Y RWY 12

BOZEMAN YELLOWSTONE INTL (BZN)

RNP APCH.		MALSR	MISSED APPROACH: Climb to 8300 direct WOLAT and right turn on track 229° to CISED and on track 317° to THESE and hold.	
<p>⚠ Circling NA to Rwys 3-21 and 11-29. For uncompensated Baro-VNAV systems, procedure NA below -23°C or above 49°C. For inop ALS, increase</p> <p>⚠ -22°C LNAV/VNAV visibility to 1½ SM and LNAV visibility Cats C and D to 1½ SM.</p>				
ATIS 135.425	BIG SKY APP CON* 118.975 226.675	BOZEMAN TOWER* 118.2 (CTAF) 0	GND CON 121.8	UNICOM 122.95



ELEV 4473	D	TDZE 4443
-----------	---	-----------



7 NM Holding Pattern	FEVIM	8300	WOLAT	CISED	THESE
10000 ← 303°					
8000 → 123°					
GP 3.00°					
TCH 53					
	HAYCI	OLENY	* LNAV only		
	6800	6800	* 1.5 NM to RWY 12		
	4.8 NM	2.1 NM	5.7 NM	1.5 NM	
CATEGORY	A	B	C	D	
LPV DA		4693-½	250 (300-½)		
LNAV/VNAV DA		5094-1¾	651 (700-1¾)		
LNAV MDA	4960-½	517 (500-½)	4960-1	4960-1½	
			517 (500-1)	517 (500-1½)	
CIRCLING	4960-1	487 (500-1)	5160-2	5360-3	
			687 (700-2)	887 (900-3)	

NW-1, 31 OCT 2024 to 28 NOV 2024

NW-1, 31 OCT 2024 to 28 NOV 2024