

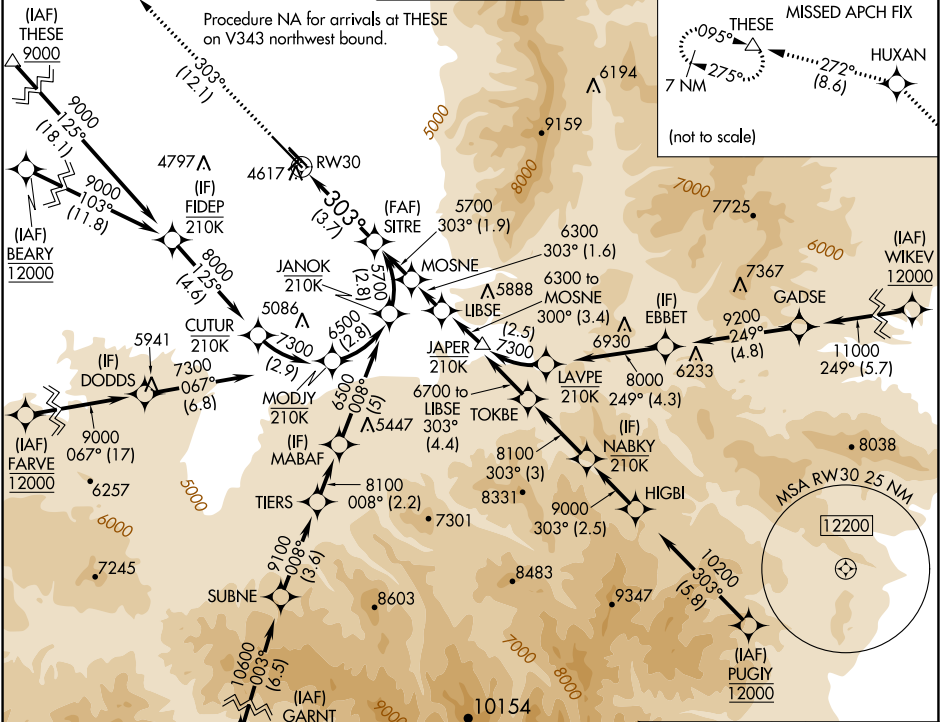
APP CRS	Rwy Idg	8994
303°	TDZE	4462
	Apt Elev	4473

RNAV (RNP) Z RWY 30

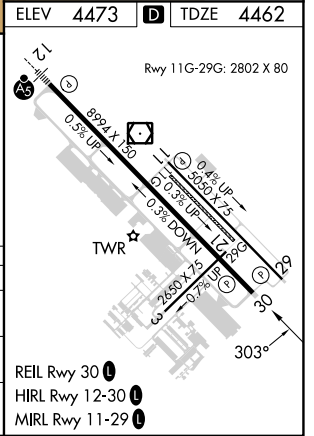
BOZEMAN YELLOWSTONE INTL (BZN)

RNP AR APCH - GPS.		MISSED APPROACH: Climb to 10000 on track 303° to HUXAN and on track 272° to THESE and hold, continue climb-in-hold to 10000.	
For uncompensated Baro-VNAV systems, procedure NA below -27°C or above 54°C. When local altimeter setting not received, procedure NA.			

ATIS 135.425	BIG SKY APP CON ★ 118.975 226.675	BOZEMAN TOWER ★ 118.2 (CTAF) 0	GND CON 121.8	UNICOM 122.95
------------------------	---	--	-------------------------	-------------------------



ELEV	4473		TDZE	4462
10000	HUXAN	tr 272°	THESE	SITRE
				5700
tr 303°				
See planview for multiple IF locations.				
CATEGORY	A	B	C	D
RNP 0.11 DA	4806-1 344 (400-1)			
RNP 0.30 DA	4885-1¼ 423 (500-1¼)			
AUTHORIZATION REQUIRED				



NW-1, 31 OCT 2024 to 28 NOV 2024

NW-1, 31 OCT 2024 to 28 NOV 2024