

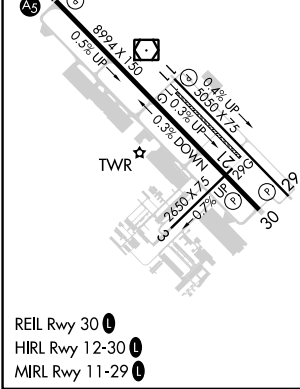
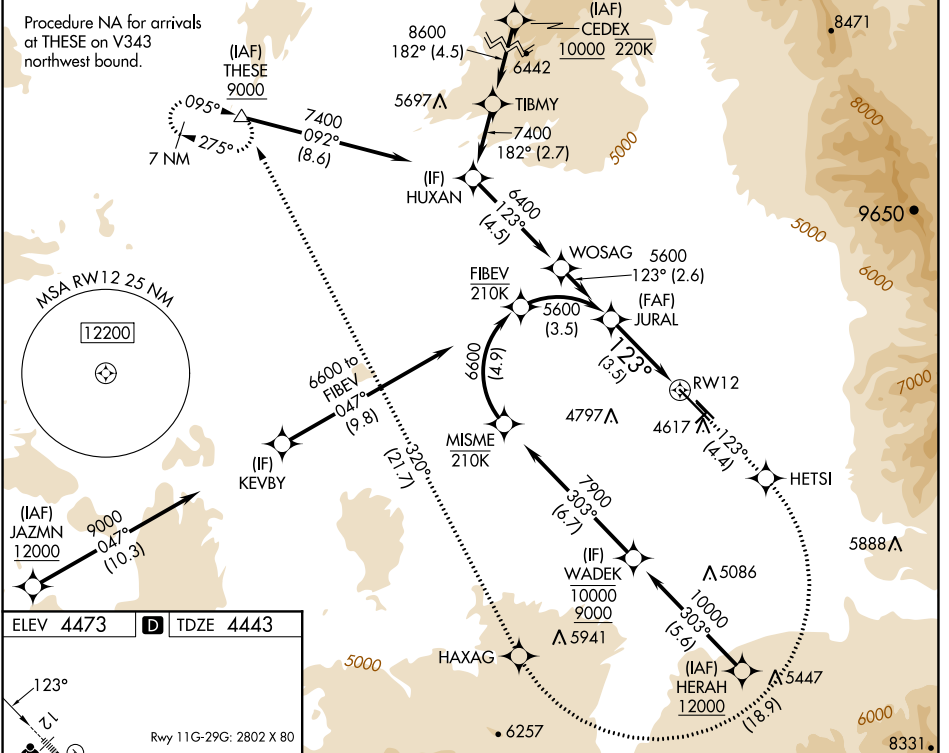
APP CRS	Rwy Idg	<b>8994</b>
<b>123°</b>	TDZE	<b>4443</b>
	Apt Elev	<b>4473</b>

# RNAV (RNP) Z RWY 12

BOZEMAN YELLOWSTONE INTL (BZN)

RNP AR APCH - GPS.		MALSR	MISSED APPROACH: Climb to 10000 on track 123° to HETSI, and right turn to HAXAG, and on track 320° to THESE and hold.
<p>▼ For uncompensated Baro-VNAV systems, procedure NA below -29°C or above 54°C. When local altimeter setting not received, procedure NA. For inop ALS, increase RNP 0.10 visibility to 7/8 SM and RNP 0.30 visibility to 1 SM.</p>			

ATIS <b>135.425</b>	BIG SKY APP CON★ <b>118.975 226.675</b>	BOZEMAN TOWER★ <b>118.2 (CTAF) 0</b>	GND CON <b>121.8</b>	UNICOM <b>122.95</b>
------------------------	--	---	-------------------------	-------------------------



JURAL	5600	10000	HETSI	HAXAG	tr 320°	THESE
		tr 123°				△
See planview for multiple IF locations.						
GP 3.00°	3.5 NM					RW12
TCH 53						
CATEGORY	A	B	C	D		
RNP 0.10 DA	4723-1/2		280 (300-1/2)			
RNP 0.30 DA	4795-5/8		352 (400-5/8)			

**AUTHORIZATION REQUIRED**

NW-1, 31 OCT 2024 to 28 NOV 2024

NW-1, 31 OCT 2024 to 28 NOV 2024