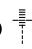


LOC I-BZN <b>109.3</b>	APP CRS <b>123°</b>	Rwy ldg TDZE Apt Elev	<b>8994</b> <b>4443</b> <b>4473</b>
---------------------------	------------------------	-----------------------------	-------------------------------------------

# ILS or LOC RWY 12

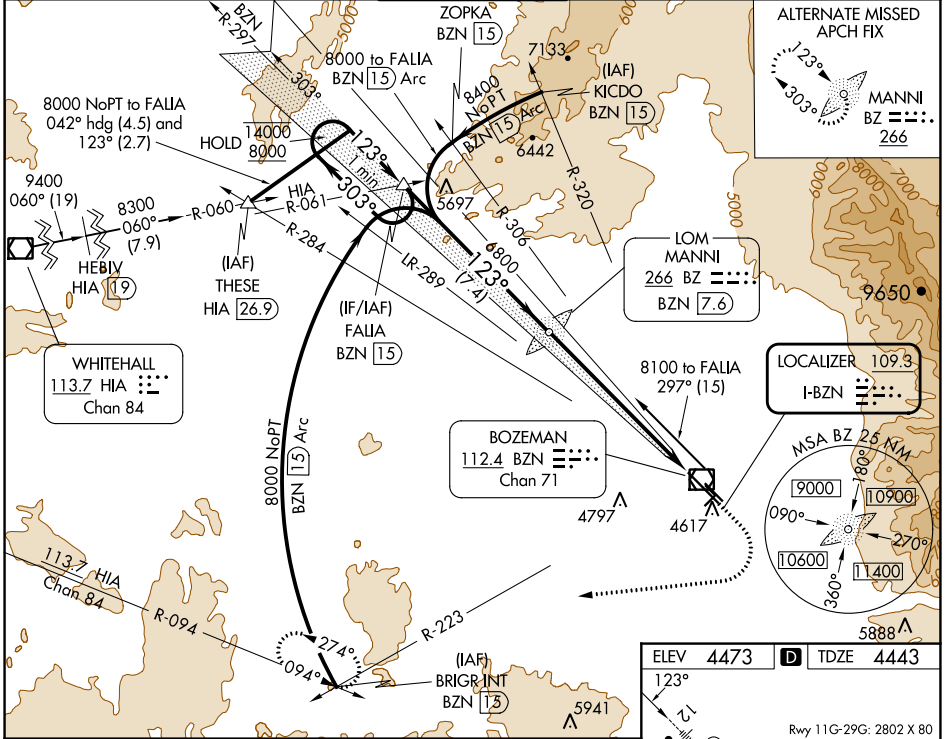
BOZEMAN YELLOWSTONE INTL (BZN)

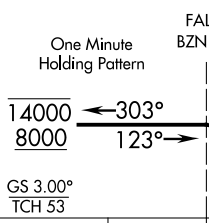
**RADAR required for procedure entry at BRIGR.**

**MALSRR** 

**MISSED APPROACH:** Climb to 5200 then climbing right turn to 8000 on heading 250° and on BZN VOR/DME R-223 to BRIGR INT/BZN 15 DME and hold.

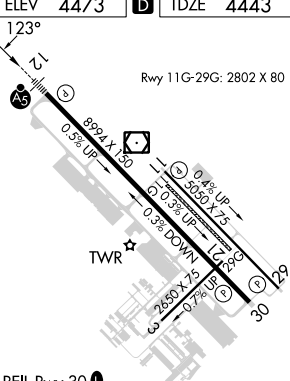
ATIS <b>135.425</b>	BIG SKY APP CON* <b>118.975 226.675</b>	BOZEMAN TOWER* <b>118.2 (CTAF) 0</b>	GND CON <b>121.8</b>	UNICOM <b>122.95</b>
------------------------	--------------------------------------------	-----------------------------------------	-------------------------	-------------------------



One Minute Holding Pattern 	FALLIA BZN 15 14000 ← 303° 8000 → 123°		5200 8000 ↑ hdg 250° BZ LOM MANNI BZN 7.6 6781 6800 BZN 1.7 BZN 0.5	
	GS 3.00° TCH 53 7.4 NM 5.9 NM 1.2 NM		BZN R-223 BRIGR INT	
CATEGORY	A	B	C	D
S-ILS 12	4643-½		200 (200-½)	
S-LOC 12	4860-½	417 (400-½)	4860-¾	417 (400-¾)
CIRCLING	4940-1	467 (500-1)	5160-2 687 (700-2)	5360-3 887 (900-3)

ELEV 4473 **D** TDZE 4443

Rwy 11G-29G: 2802 X 80



TWR

REIL Rwy 30 **0**  
 HIRL Rwy 12-30 **0**  
 MRL Rwy 11-29 **0**

FAF to MAP 7.1 NM

Knots	60	90	120	150	180
Min:Sec	7:06	4:44	3:33	2:50	2:22

NW-1, 11 JUL 2024 to 08 AUG 2024

NW-1, 11 JUL 2024 to 08 AUG 2024