

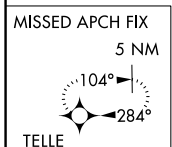
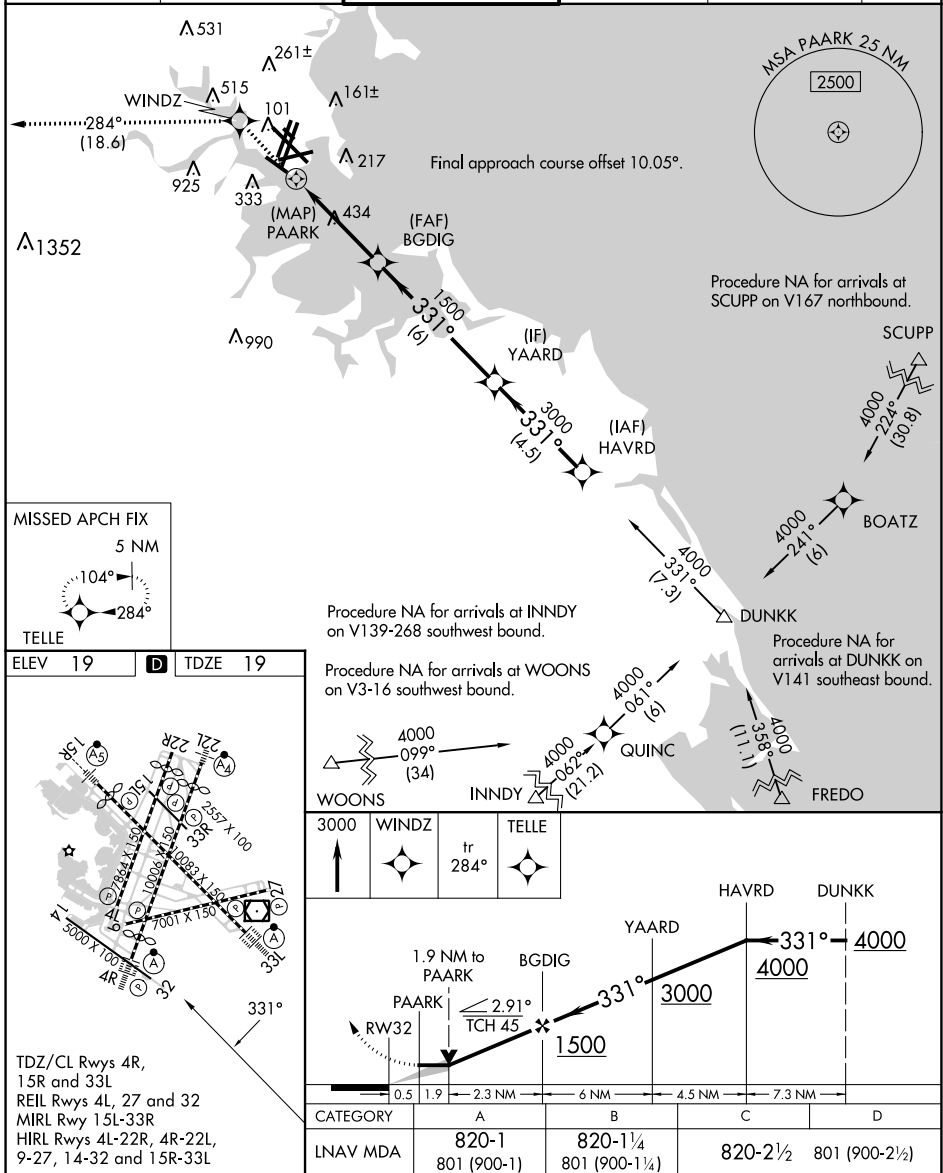
RNAV (GPS) RWY 32

GENERAL EDWARD LAWRENCE LOGAN INTL (BOS)

APP CRS	Rwy Idg	5000
331°	TDZE	19
	Apt Elev	19

RNP APCH - GPS.		BOSTON TOWER		GND CON		CLNC DEL		CPDLC
D-ATIS	BOSTON APP CON	128.8	257.8 (WEST)	121.75	121.9	121.65	257.8	
135.0	120.6 263.1	132.225	257.8 (EAST)					

MISSED APPROACH: Climb to 3000 direct WINDZ and on track 284° to TELLE and hold.



ELEV 19	D	TDZE 19
<p>TDZ/CL Rwys 4R, 15R and 33L REIL Rwys 4L, 27 and 32 MIRL Rwy 15L-33R HIRL Rwys 4L-22R, 4R-22L, 9-27, 14-32 and 15R-33L</p>		

Procedure NA for arrivals at WINDZ on V139-268 southwest bound.		Procedure NA for arrivals at WOODS on V3-16 southwest bound.		Procedure NA for arrivals at DUNKK on V141 southeast bound.	
WINDZ	WOODS	INNDY	QUINC	FREDO	
3000	4000-099° (34)	4000-062° (21.2)	4000-061° (6)	4000-358° (11.1)	
↑	WINDZ	tr 284°	TELLE		
3000		3000		4000	
1.9 NM to PAARK		2.91 NM TCH 45°		6 NM	
PAARK		BGDIG		YAARD	
RW32		331°		331°	
0.5		1.9		2.3	
CATEGORY		A		B	
LNVA MDA		820-1		820-1¼	
		801 (900-1)		801 (900-1½)	
		820-2½		801 (900-2½)	

NE-1, 08 AUG 2024 to 05 SEP 2024

NE-1, 08 AUG 2024 to 05 SEP 2024