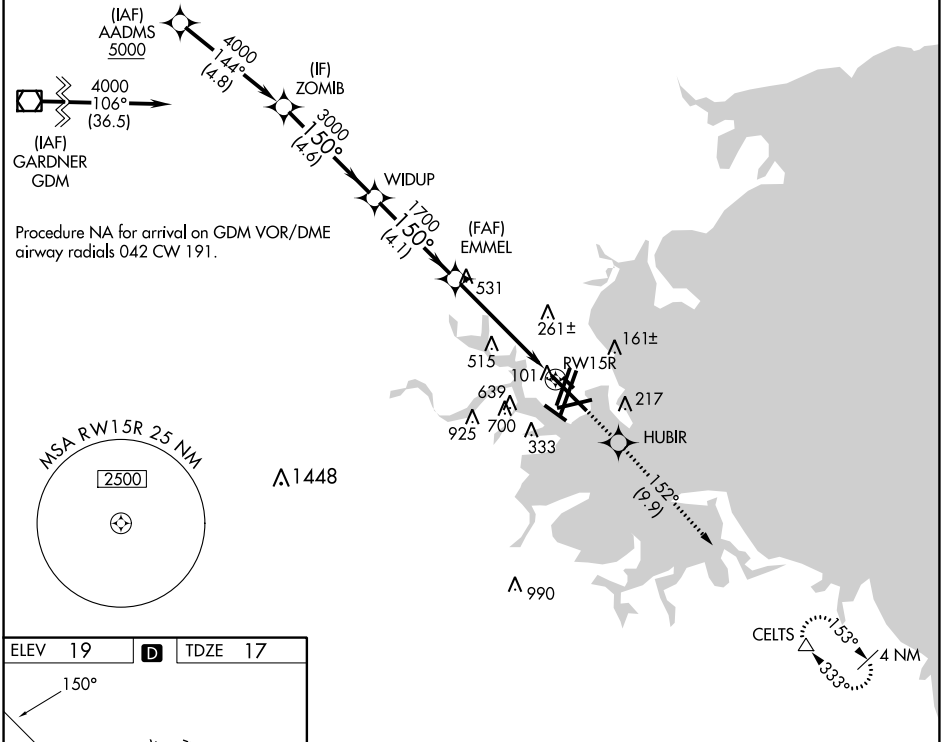


WAAS CH 42925 W15A	APP CRS 150°	Rwy ldg TDZE Apt Elev	9201 17 19
--	------------------------	-----------------------------	---------------------------------------

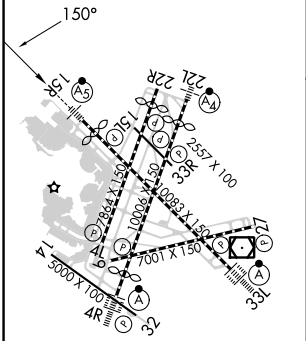
RNAV (GPS) RWY 15R

GENERAL EDWARD LAWRENCE LOGAN INTL (BOS)

RNP APCH - GPS.		MALSR		MISSED APPROACH: Climb to 3000 direct HUBIR and on track 152° to CELTS and hold.	
<p>▼ For uncompensated Baro-VNAV systems, LNAV/VNAV NA below -15°C or above 54°C. For inop ALS, increase LNAV Cats C and D visibility to 1 3/8 SM.</p>					
D-ATIS 135.0	BOSTON APP CON 120.6 263.1	BOSTON TOWER 128.8 257.8 (WEST) 132.225 257.8 (EAST)	GND CON 121.75 121.9	CLNC DEL 121.65 257.8	CPDLC



ELEV 19	D	TDZE 17
---------	----------	---------



TDZ/CL Rws 4R, 15R and 33L
REIL Rws 4L, 27 and 32
MIRL Rwy 15L-33R
HIRL Rws 4L-22R, 4R-22L, 9-27, 14-32 and 15R-33L

VGSi and RNAV glidepath not coincident (VGSi Angle 3.00/TCH 71).		3000	HUBIR	tr 152°	CE LTS
GP 3.00° TCH 60	4.6 NM	4.1 NM	3.5 NM	1.7 NM	
CATEGORY	A	B	C	D	
LPV DA		217/18	200 (200-1/2)		
LNAV/VNAV DA		567-1 1/8	550 (600-1 1/8)		
LNAV MDA	620/24	603 (700-1/2)	620-1 3/8	603 (700-1 3/8)	

NE-1, 08 AUG 2024 to 05 SEP 2024

NE-1, 08 AUG 2024 to 05 SEP 2024