

PATSS SEVEN DEPARTURE (RNAV)

AL-58 (FAA)

BOSTON, MASSACHUSETTS

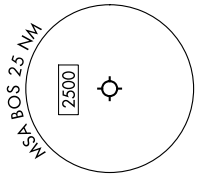
NE-1, 08 AUG 2024 to 05 SEP 2024

**TOP ALTITUDE:**  
5000

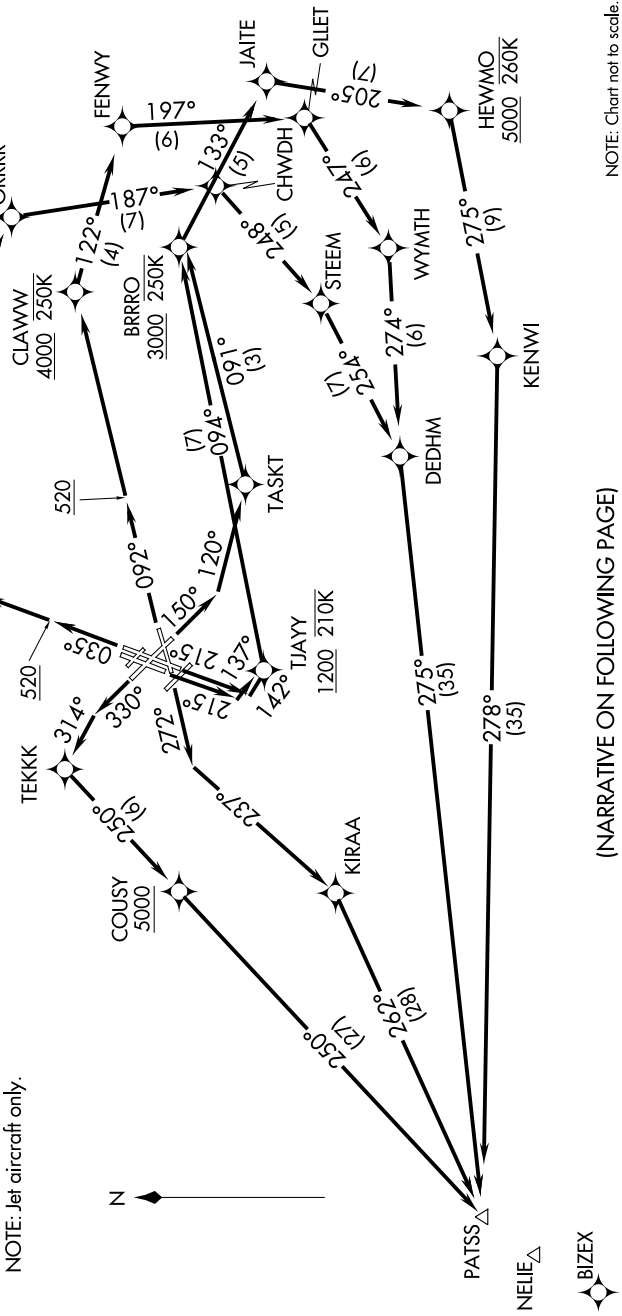
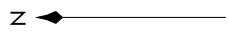
RNAV 1 - DME/DME/IRU or GPS.  
RADAR required for non-GPS equipped aircraft.

**TAKEOFF MINIMUMS:**  
 Rwy 4L, 14, 15L, 32, 33R: NA-ATC.  
 Rwy 4R, 9, 15R, 22R, 33L: Standard with minimum climb of 500'/NM to 520.  
 Rwy 22L: 300-1 with minimum climb of 500'/NM to 520, or standard with minimum climb of 500'/NM to 520, if tower reports no tall vessels in the departure area.  
 Rwy 27: Standard with minimum climb of 500'/NM to 1300.

**BOSTON DEP CON**  
133.0  
**D-ATIS**  
135.0  
**CLNC DEL**  
121.65 257.8  
**CPDLC**  
121.75 121.9  
**GND CON**  
128.8 257.8 (WEST)  
**BOSTON TOWER**  
132.225 257.8 (EAST)



NOTE: Jet aircraft only.



(NARRATIVE ON FOLLOWING PAGE)

NOTE: Chart not to scale.

NE-1, 08 AUG 2024 to 05 SEP 2024

PATSS SEVEN DEPARTURE (RNAV)