

LOC/DME I-DGU 111.3 Chan 50	APP CRS 272°	Rwy ldg 7001 TDZE 17 Apt Elev 19
--	------------------------	---

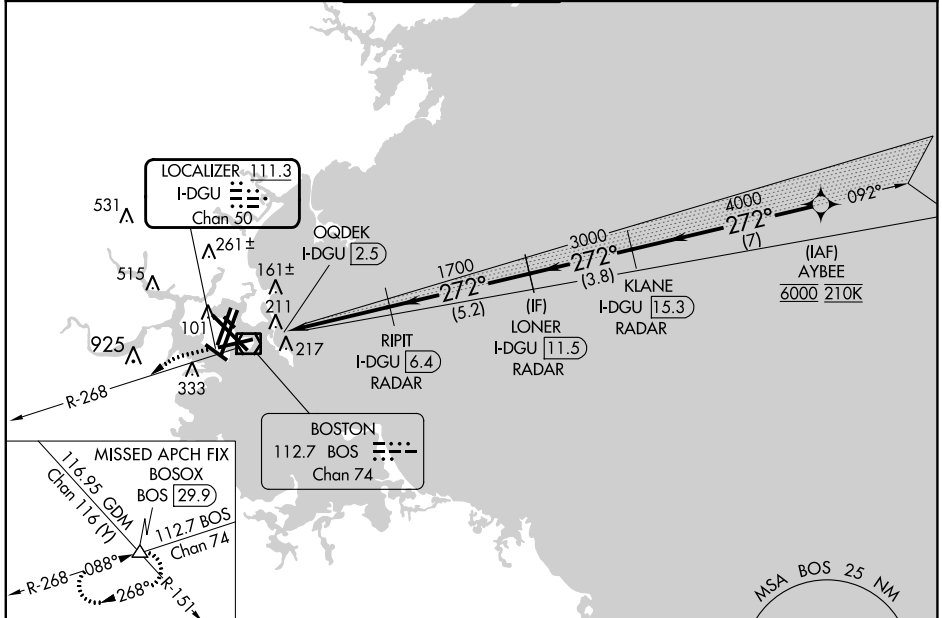
ILS or LOC RWY 27

GENERAL EDWARD LAWRENCE LOGAN INTL (BOS)

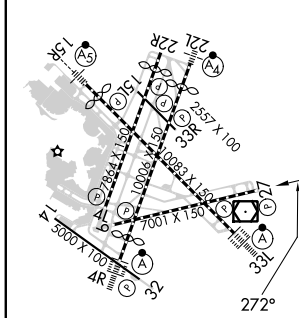
RNP APCH - GPS. From AYBEE.
RADAR required for procedure entry. DME or RADAR required.

MISSED APPROACH: Climb to 3000 on BOS VOR/DME R-268 to BOSOX INT/BOS 29.9 DME and hold.

D-ATIS 135.0	BOSTON APP CON 120.6 263.1	BOSTON TOWER 128.8 257.8 (WEST) 132.225 257.8 (EAST)	GND CON 121.75 121.9	CLNC DEL 121.65 257.8	CPDLC
------------------------	--------------------------------------	--	--------------------------------	---------------------------------	-------



ELEV 19	D	TDZE 17
---------	----------	---------



TDZ/CL Rwy 4R, 15R and 33L
 REIL Rwy 4L, 27 and 32
 MRL Rwy 15L-33R
 HIRL Rwy 4L-22R, 4R-22L, 9-27, 14-32 and 15R-33L

FAF to MAP 3.9 NM

Knots	60	90	120	150	180
Min:Sec	3:48	2:32	1:54	1:31	1:16

3000	BOSOX	VGS I and ILS glidepath not coincident (VGS I Angle 3.00/TCH 71).	AYBEE
BOS R-268	△		
1700	OQDEK I-DGU [2.5]	RIPIT I-DGU [6.4] RADAR	LONER I-DGU [11.5] RADAR
3000			KLANE I-DGU [15.3] RADAR
4000			
6000			
GS 3.00°			TCH 57
1.2	3.9 NM	5.2 NM	3.8 NM
7 NM			
CATEGORY	A	B	C
S-ILS 27	460-1½ 443 (500-1½)		
S-LOC 27	460-1½ 443 (500-1½)		

NE-1, 11 JUL 2024 to 08 AUG 2024

NE-1, 11 JUL 2024 to 08 AUG 2024