

BOISE, IDAHO

AL-57 (FAA)

24305

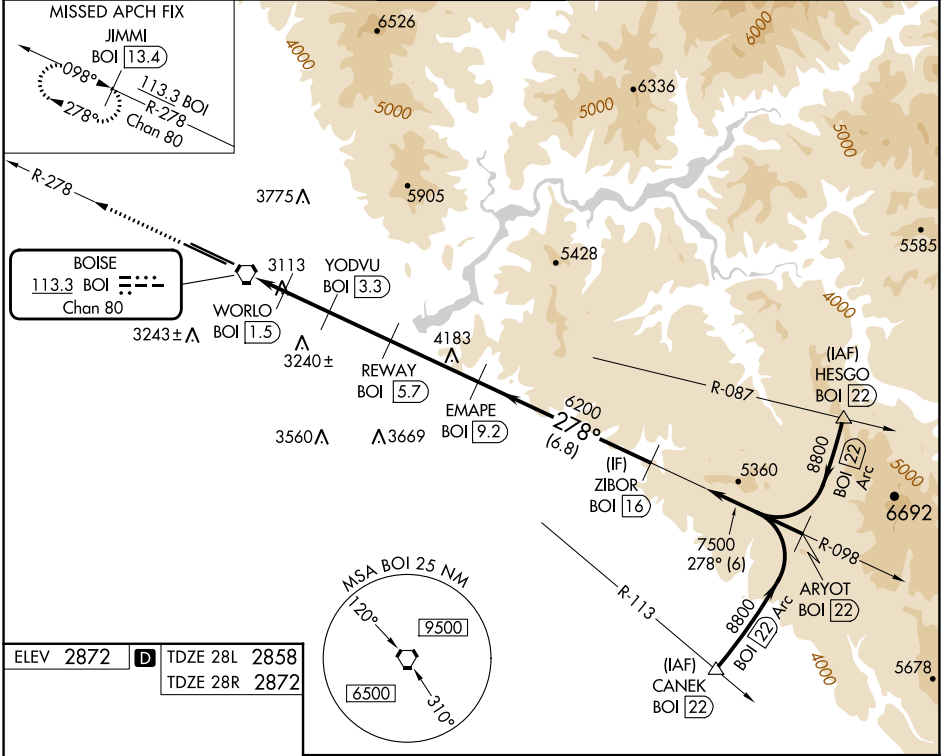
VORTAC BOI 113.3 Chan 80	APP CRS 278°	Rwy Idg	28L	28R
		TDZE	9763	10000
			2858	2872
		Apt Elev	2872	2872

VOR Y or TACAN Y RWY 28L

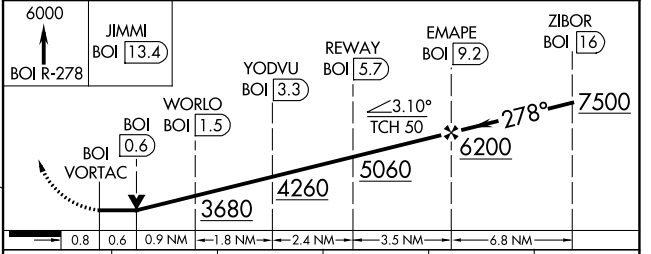
BOISE AIR TRML/GOWEN FLD (BOI)

DME required.		MALSR Rwy 28L	MISSED APPROACH: Climb to 6000 on BOI VORTAC R-278 to JIMMI/13.4 DME and hold.
	Circling NA north of Rwy 10L-28R. For inop ALS, increase S-28L Cat E visibility to 1/2 SM.		

D-ATIS 123.9 290.4	BIG SKY APP CON 119.6 269.4	BOISE TOWER 118.1 257.8	GND CON 121.7 348.6	CLNC DEL 125.9 323.2
------------------------------	---------------------------------------	-----------------------------------	-------------------------------	--------------------------------



ELEV 2872		TDZE 28L 2858
		TDZE 28R 2872



	A	B	C	D	E
S-28L	3380/24	522 (600-1/2)	3380/55	522 (600-1)	
SIDESTEP 28R	3380-1 3/8	508 (600-1 1/8)	3380-1 7/8	3380-2 1/2	508 (600-2 1/2)
	3440-1 568 (600-1)		3640-2 1/4	3820-3	3880-3
			768 (800-2 1/4)	948 (1000-3)	1008 (1100-3)

REIL Rwy 10L
TDZ/CL Rws 10R and 28L
HIRL Rws 10L-28R and 10R-28L

BOISE, IDAHO
Amdt 3 14JUL22

43°34'N-116°13'W

VOR Y or TACAN Y RWY 28L

NW-1, 31 OCT 2024 to 28 NOV 2024

NW-1, 31 OCT 2024 to 28 NOV 2024