

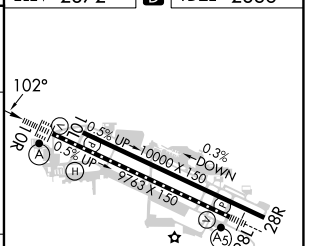
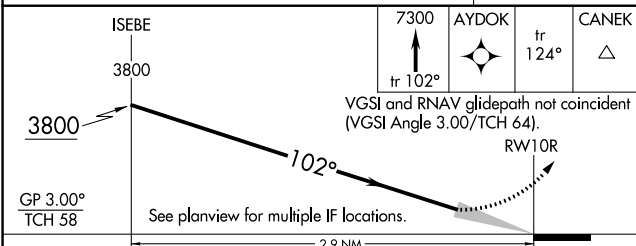
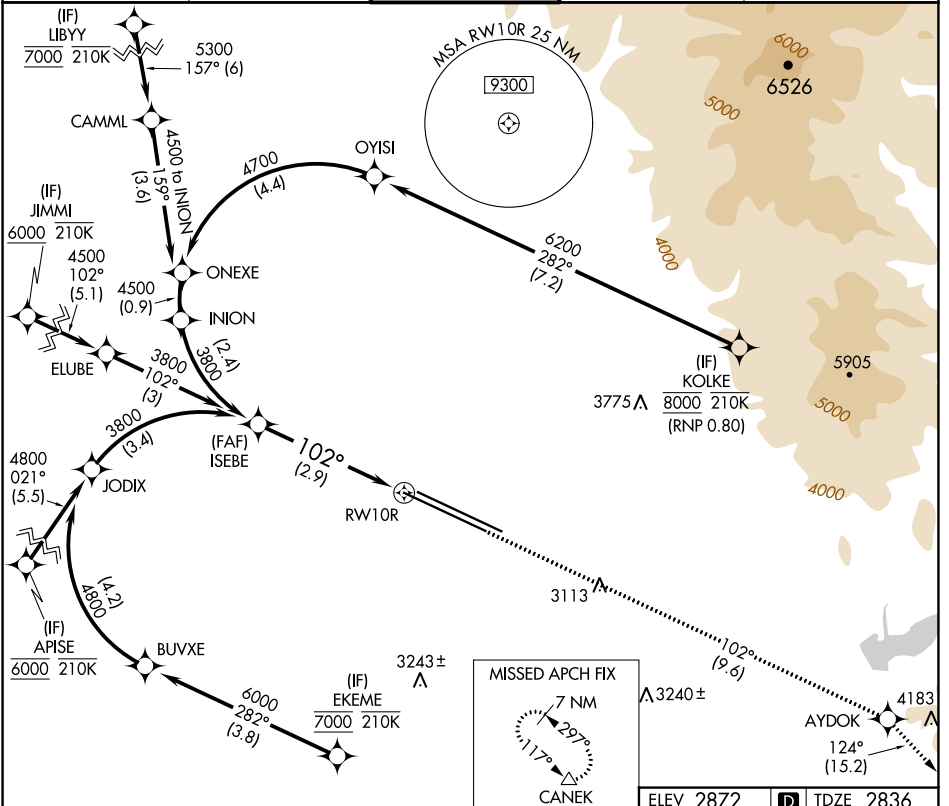
RNAV (RNP) Z RWY 10R

BOISE AIR TRML/GOWEN FLD (BOI)

APP CRS	Rwy Idg	9763
102°	TDZE	2836
	Apt Elev	2872

RNP AR APCH - GPS.	ALSF-2	MISSED APPROACH: Climb to 7300 on track 102° to AYDOK and on track 124° to CANEK and hold.
▼ For uncompensated Baro-VNAV systems, procedure NA below -14°C or above 54°C.		

D-ATIS	BIG SKY APP CON	BOISE TOWER	GND CON	CLNC DEL
123.9 290.4	119.6 269.4	118.1 257.8	121.7 348.6	125.9 323.2



CATEGORY	A	B	C	D
RNP 0.30 DA	3219/35		383 (400-5%)	
AUTHORIZATION REQUIRED				

REIL Rwy 10L
 TDZ/CL Rwy 10R and 28L
 HIRL Rwy 10L-28R and 10R-28L

NW-1, 31 OCT 2024 to 28 NOV 2024

NW-1, 31 OCT 2024 to 28 NOV 2024