

APP CRS **102°**  
 Rwy Idg **10000**  
 TDZE **2844**  
 Apt Elev **2872**

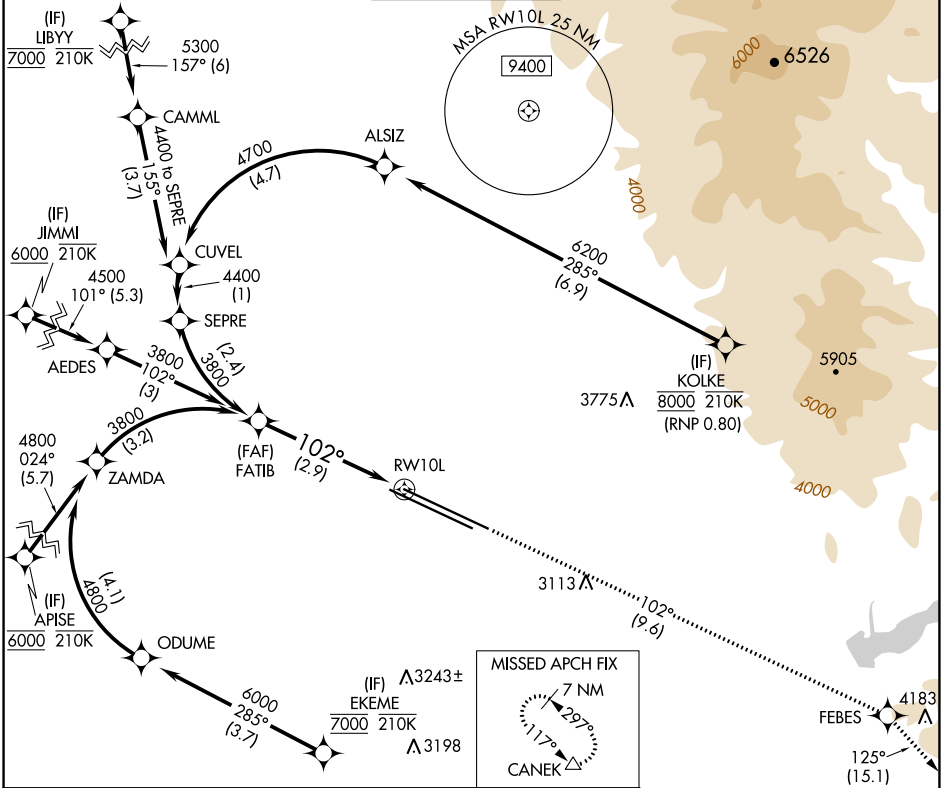
# RNAV (RNP) Z RWY 10L

BOISE AIR TRML/GOWEN FLD (BOI)

RNP AR APCH - GPS.  
 ▼ For uncompensated Baro-VNAV systems, procedure NA below -1.4°C or above 54°C.

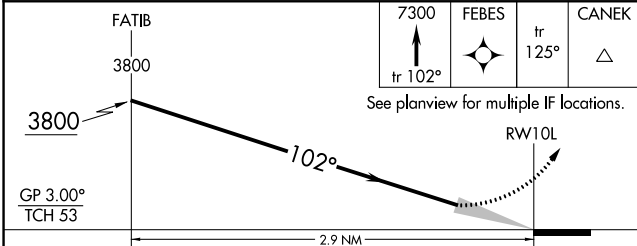
MISSED APPROACH: Climb to 7300 on track 102° to FEBES and on track 125° to CANEK and hold.

D-ATIS <b>123.9 290.4</b>	BIG SKY APP CON <b>119.6 269.4</b>	BOISE TOWER <b>118.1 257.8</b>	GND CON <b>121.7 348.6</b>	CLNC DEL <b>125.9 323.2</b>
------------------------------	---------------------------------------	-----------------------------------	-------------------------------	--------------------------------



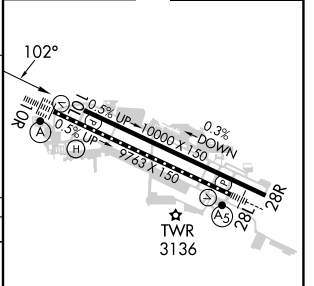
NW-1, 31 OCT 2024 to 28 NOV 2024

NW-1, 31 OCT 2024 to 28 NOV 2024



ELEV 2872 **D** TDZE 2844

CATEGORY	A	B	C	D
RNP 0.30 DA	3237-1 $\frac{1}{8}$ 393 (400-1 $\frac{1}{8}$ )			



**AUTHORIZATION REQUIRED**

REIL Rwy 10L  
 TDZ/CL Rwy 10R and 28L  
 HIRL Rwy 10L-28R and 10R-28L