

LOC/DME I-BOI <b>111.1</b> Chan <b>48</b>	APP CRS <b>102°</b>	Rwy Idg 10R 10L	<b>9763</b> <b>10000</b>
		TDZE <b>2836</b> <b>2844</b>	
		Apt Elev <b>2872</b> <b>2872</b>	

# ILS Y or LOC Y RWY 10R

BOISE AIR TRML/GOWEN FLD (BOI)

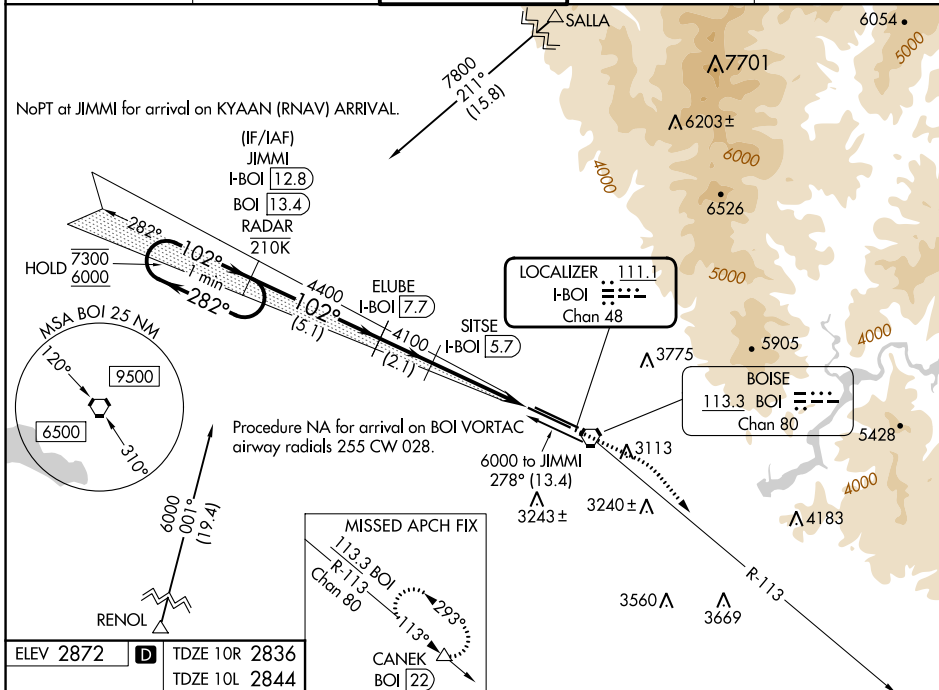
DME required. RNAV 1 - GPS. From SALLA and RENOL.

ALSF-2  
Rwy 10R

**⚠** For inop ALS, increase S-LOC 10R Cats C/D visibility to RVR 5500. Circling NA north of Rwy 10L-28R.

MISSED APPROACH: Climb to 3300 then climbing right turn to 7300 on BOI VORTAC R-113 to CANEK/BOI VORTAC 22 DME and hold.

D-ATIS <b>123.9 290.4</b>	BIG SKY APP CON <b>119.6 269.4</b>	<b>BOISE TOWER</b> <b>118.1 257.8</b>	GND CON <b>121.7 348.6</b>	CLNC DEL <b>125.9 323.2</b>
------------------------------	---------------------------------------	--	-------------------------------	--------------------------------



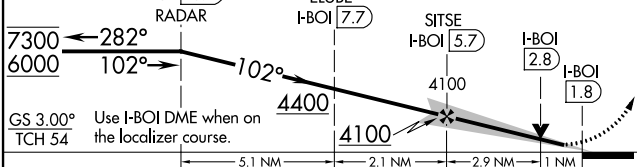
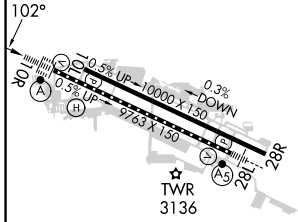
ELEV 2872	<b>D</b> TDZE 10R 2836
	TDZE 10L 2844

VGSI and ILS glidepath not coincident (VGSI Angle 3.00/TCH 64).

One Minute Holding Pattern

JIMMI I-BOI 12.8  
BOI 13.4  
RADAR

ELUBE I-BOI 7.7  
SITSE I-BOI 5.7  
I-BOI 2.8  
I-BOI 1.8



CATEGORY	A	B	C	D
S-ILS 10R	3036/18 200 (200-½)			
S-LOC 10R	3200/24	364 (400-½)	3200/35	364 (400-¾)
SIDESTEP 10L	3220-1	376 (400-1)	3220-1½ 376 (400-1½)	3220-2 376 (400-2)
<b>C</b> CIRCLING	3440-1	568 (600-1)	3640-2¼ 768 (800-2¼)	3820-3 948 (1000-3)

REIL Rwy 10L  
TDZ/CL Rwy 10R and 28L  
HIRL Rwy 10L-28R and 10R-28L

NW-1, 31 OCT 2024 to 28 NOV 2024

NW-1, 31 OCT 2024 to 28 NOV 2024