

LOC/DME I-BOI <b>111.1</b> Chan 48	APP CRS <b>102°</b>	Rwy Idg <b>9763</b> TDZE <b>2836</b> Apt Elev <b>2872</b>
--	------------------------	---

# ILS Y RWY 10R (SA CAT I)

BOISE AIR TRML/GOWEN FLD (BOI)

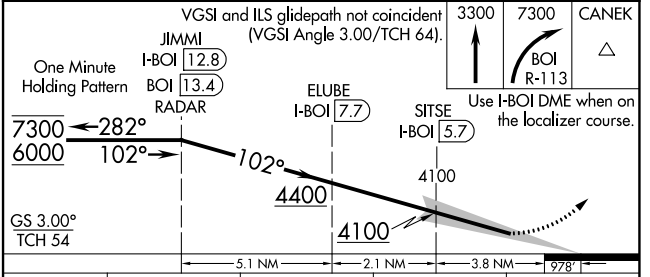
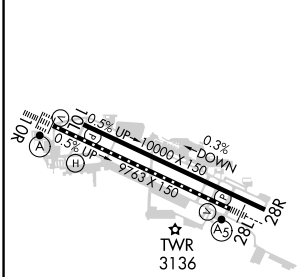
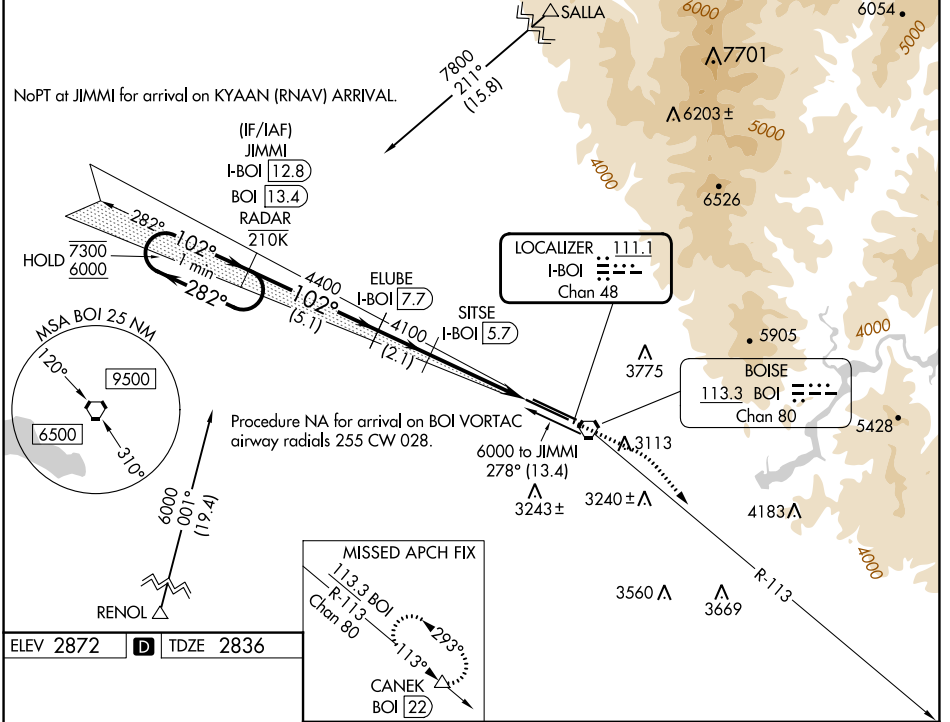
DME required. RNAV 1 - GPS. From SALLA and RENOL.

Requires specific OPSPEC, MSPEC, or LOA approval and use of HUD to DH.



MISSED APPROACH: Climb to 3300 then dimbing right turn to 7300 on BOI VORTAC R-113 to CANEK/BOI VORTAC 22 DME and hold.

D-ATIS <b>123.9 290.4</b>	BIG SKY APP CON <b>119.6 269.4</b>	BOISE TOWER <b>118.1 257.8</b>	GND CON <b>121.7 348.6</b>	CLNC DEL <b>125.9 323.2</b>
------------------------------	---------------------------------------	-----------------------------------	-------------------------------	--------------------------------



ELEV 2872	D	TDZE 2836
-----------	---	-----------

CATEGORY	A	B	C	D
S-ILS 10R	RA 181/14 150 DA 2986			

**SA CATEGORY I ILS - SPECIAL AIRCREW & AIRCRAFT CERTIFICATION REQUIRED**

REIL Rwy 10L  
TDZ/CL Rwy 10R and 28L  
HIRL Rwy 10L-28R and 10R-28L

NW-1, 31 OCT 2024 to 28 NOV 2024

NW-1, 31 OCT 2024 to 28 NOV 2024