

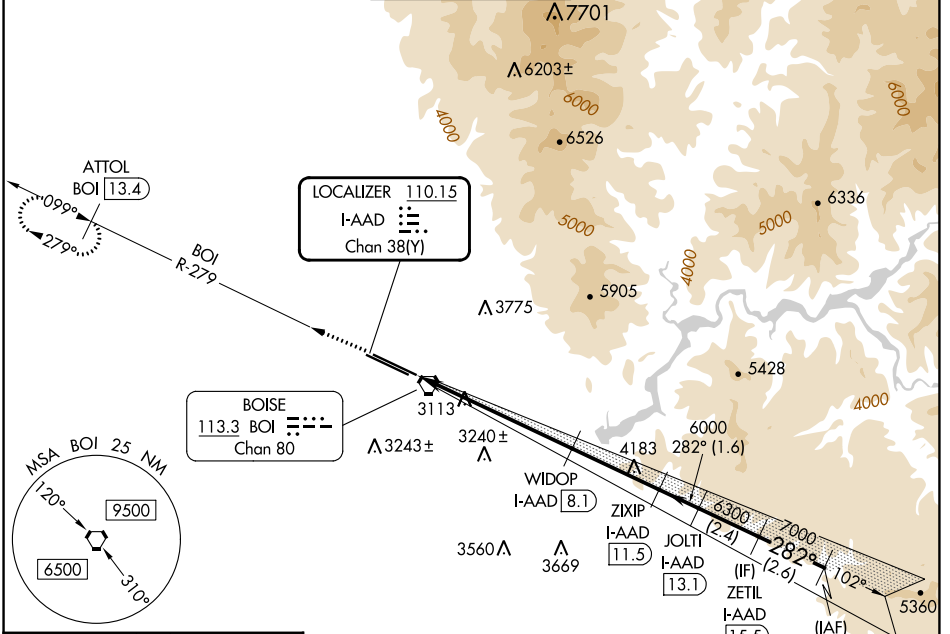
LOC/DME I-AAD 110.15 Chan 38(Y)	APP CRS 282°	Rwy ldg 10000 TDZE 2871 Apt Elev 2871
--	------------------------	---

ILS or LOC RWY 28R

BOISE AIR TRML/GOWEN FLD (BOI)

⚠ Circling NA north of Rwy 10L-28R. DME required.	MISSED APPROACH: Climb to 6000 on BOI VORTAC R-279 to ATTOL/BOI 13.4 DME and hold.
--	--

D-ATIS 123.9 290.4	BIG SKY APP CON 119.6 269.4	BOISE TOWER 118.1 257.8	GND CON 121.7 348.6	CLNC DEL 125.9 323.2
------------------------------	---------------------------------------	-----------------------------------	-------------------------------	--------------------------------

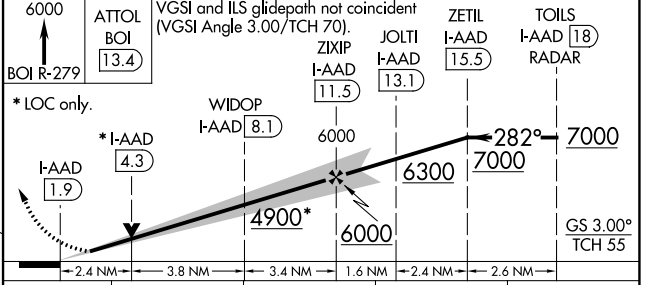
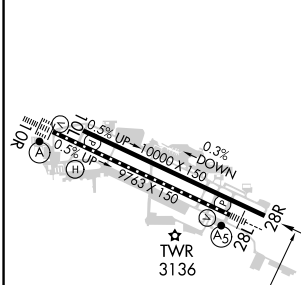


NW-1, 31 OCT 2024 to 28 NOV 2024

NW-1, 31 OCT 2024 to 28 NOV 2024

ELEV 2871	D TDZE 2871
-----------	--------------------

RADAR and DME REQUIRED



REIL Rwy 10L TDZ/CL Rwy 10R and 28L HIRL Rwy 10L-28R and 10R-28L	CIRCLING	3700-1¼ 829 (900-1¼)	3700-1¼ 829 (900-1¼)	3740-2½ 869 (900-2½)	3820-3 949 (1000-3)
CATEGORY		A	B	C	D
S-ILS 28R		3121-¾ 250 (300-¾)			
S-LOC 28R		3700-1 829 (900-1)	3700-1¼ 829 (900-1¼)	3700-2½ 829 (900-2½)	829 (900-2½)