

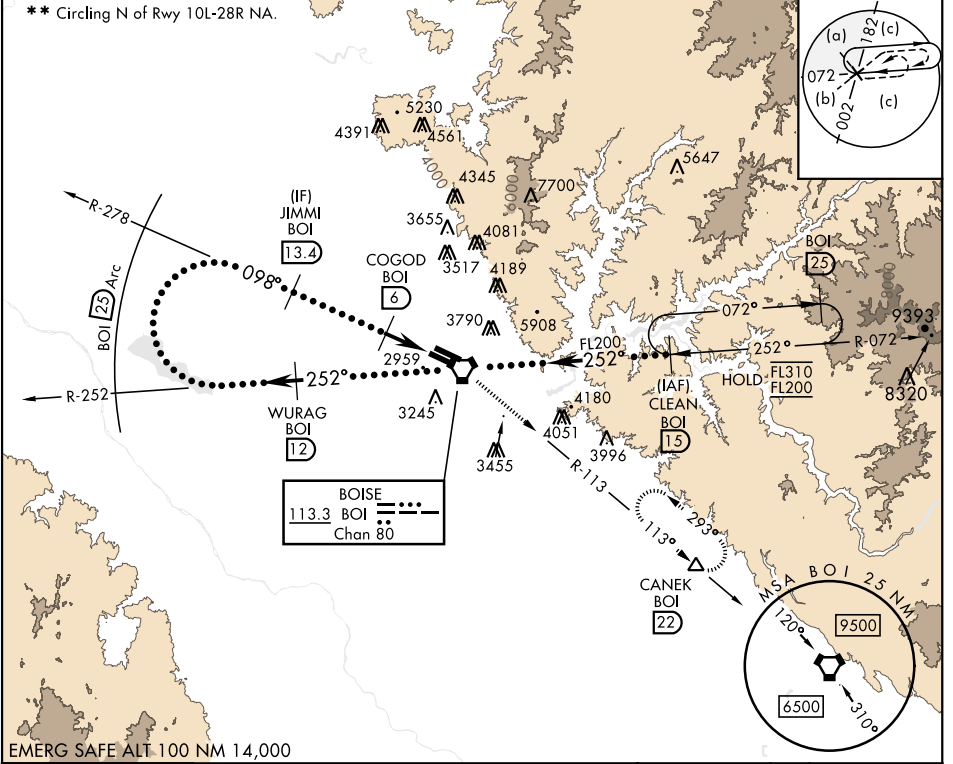
BOISE, IDAHO

HI-VOR or TACAN RWY 10R

VORTAC BOI 113.3 Chan 80	APCH CRS 098°	Rwy Idg 9763 TDZE 2836 Arprt Elev 2872	AL-57 [USAF]	BOISE AIR TERMINAL (GOWEN FLD) (KBOI)
--	-------------------------	---	--------------	---------------------------------------

DME required.	ALSf-2	MISSED APPROACH: Climb to 7300 on BOI VORTAC R-113 to CANEK/22 DME and hold.
---------------	--------	---

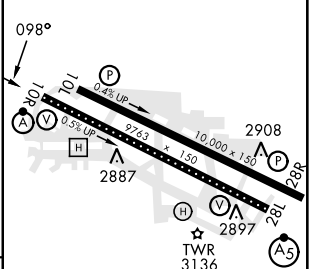
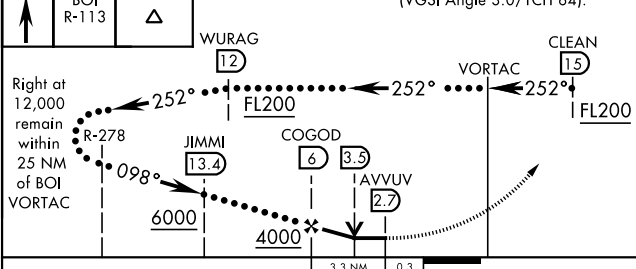
ATIS 123.9 290.4	BIG SKY APP CON 119.6 269.4	BOISE TOWER 118.1 257.8	GND CON 121.7 348.6	CLNC DEL 125.9 323.2	ASOS
----------------------------	---------------------------------------	-----------------------------------	-------------------------------	--------------------------------	------



NW-1, 31 OCT 2024 to 28 NOV 2024

NW-1, 31 OCT 2024 to 28 NOV 2024

7300	BOI R-113	CANEK	VGSI and descent angles not coincident (VGSI Angle 3.0/TCH 64).	ELEV 2872	TDZE 2836
------	-----------	-------	---	-----------	-----------



CATEGORY	C	D	E	TDZL/CL Rwy 10R-28L HIRL Rwys 10L-28R, 10R-28L REIL Rwy 10L
S-10R *	3220/35 384 (400-5%)	3220/35 384 (400-5%)	3880-3	
CIRCLING **	3740-2 1/4 768 (800-2 1/4)	3820-3 948 (1000-3)	3880-3 1008 (1100-3)	

BOISE, IDAHO 43°34'N-116°13'W BOISE AIR TERMINAL (GOWEN FLD) (KBOI)

Amtd 2 08SEP22

HI-VOR or TACAN RWY 10R