

BOISE, IDAHO

HI-ILS Z or LOC Z RWY 10R

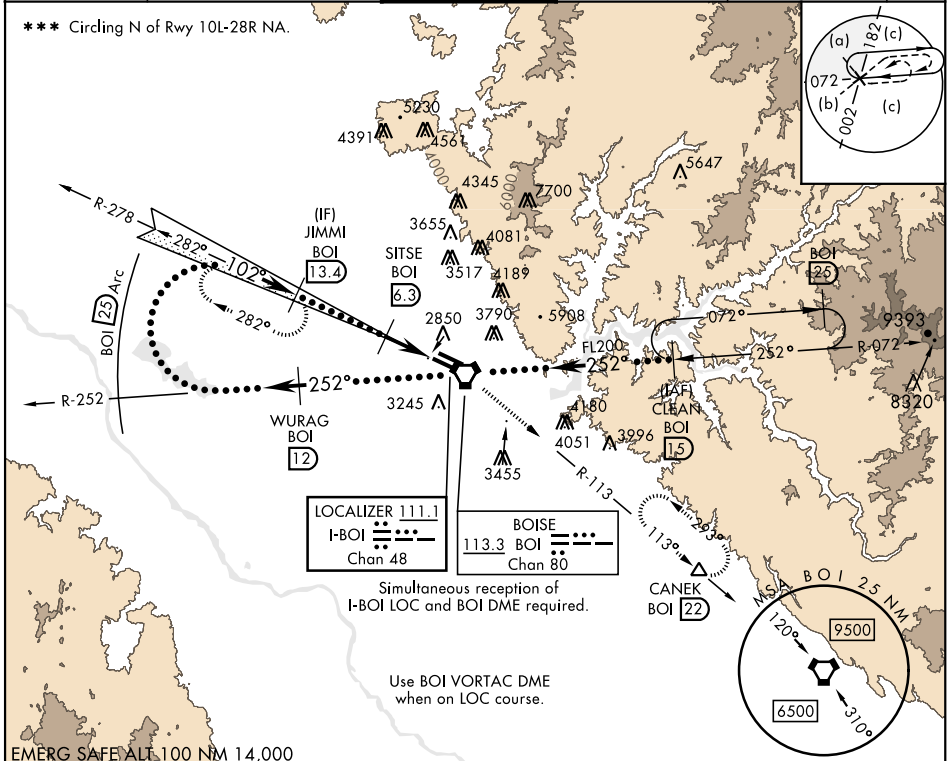
LOC I-BOI 111.1	APCH CRS 102°	Rwy Idg TDZE Arprt Elev 9763 2836 2872	AL-57 [USAF]	BOISE AIR TERMINAL (GOWEN FLD)	(KBOI)
---------------------------	-------------------------	--	--------------	--------------------------------	--------

DME required. **ALSF-2**

MISSED APPROACH: Climb to 7300 on BOI VORTAC R-113 to CANEK/BOI 22 DME and hold.

*** When ALS inop, increase RVR to 40 and vis to 3/4 mile.
 ** When ALS inop, increase RVR to 55 and vis to 1 mile.

ATIS 123.9 290.4	BIG SKY APP CON 119.6 269.4	BOISE TOWER 118.1 257.8	GND CON 121.7 348.6	CLNC DEL 125.9 323.2	ASOS
----------------------------	---------------------------------------	-----------------------------------	-------------------------------	--------------------------------	------



EMERG SAFE ALL 100 NM 14,000

7300 ↑ BOI R-113	CANEK △	WURAG BOI 12	VGSI and ILS glidepath not coincident (VGSI Angle 3.00/TCH 64).		CLEAN BOI 15
<p>Right of 12,000 remain within 25 NM of BOI VORTAC</p> <p>GS 3.00° TCH 54</p> <p>FL200 ← 252° ← 252° ← 252° ← FL200</p> <p>6000 ← 102° ← 4100 ← 3.6 NM ← 0.3</p>					
CATEGORY	C	D	E		
S-ILS 10R **	3036/18	200	(200-1/2)		
S-LOC 10R **	3200/35	364	(400-3/8)		
***	3640-2 1/4 768 (800-2 1/4)	3820-3 948 (1000-3)	3880-3 1008 (1100-3)		
CIRCLING					

ELEV 2872

TDZE 2836

BOISE, IDAHO 43°34'N-116°13'W BOISE AIR TERMINAL (GOWEN FLD) (KBOI)

HI-ILS Z or LOC Z RWY 10R

Amtd 5A 29DEC22

NW-1, 31 OCT 2024 to 28 NOV 2024

NW-1, 31 OCT 2024 to 28 NOV 2024