

(BEWTE.BEWTE4) 22195

# BEWTE FOUR ARRIVAL (RNAV)

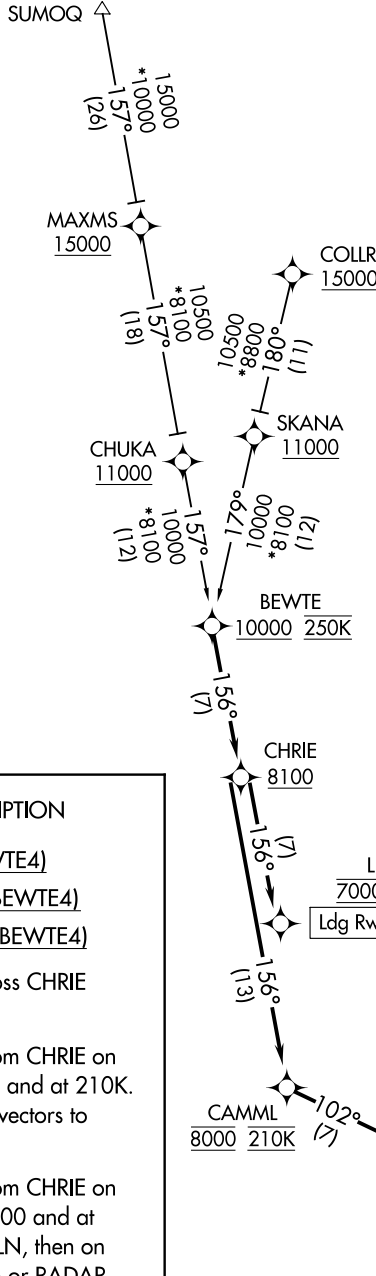
AL-57 (FAA)

BOISE AIR TRML/GOWEN FLD (BOI)  
BOISE, IDAHO

BIG SKY APP CON  
119.6 269.4 (SOUTH)  
126.9 351.85 (NORTH)  
D-ATIS  
123.9 290.4  
BOISE TOWER  
118.1 257.8  
GND CON  
121.7 348.6

RNAV 1- GPS.

RADAR required.



## ARRIVAL ROUTE DESCRIPTION

COLLR TRANSITION (COLLR.BEWTE4)

MAXMS TRANSITION (MAXMS.BEWTE4)

SUMOQ TRANSITION (SUMOQ.BEWTE4)

From BEWTE on track 156° to cross CHRIE at or above 8100.

LANDING RUNWAYS 10L/R: From CHRIE on track 156° to cross LIBBY at 7000 and at 210K. Expect RNP approach or RADAR vectors to final approach course.

LANDING RUNWAYS 28L/R: From CHRIE on track 156° to cross CAMML at 8000 and at 210K, then on track 102° to DYYLN, then on track 102°. Expect RNP approach or RADAR vectors to final approach course.

NOTE: Chart not to scale.

NW-1, 31 OCT 2024 to 28 NOV 2024

NW-1, 31 OCT 2024 to 28 NOV 2024

# BEWTE FOUR ARRIVAL (RNAV)

(BEWTE.BEWTE4) 14JUL22

BOISE, IDAHO  
BOISE AIR TRML/GOWEN FLD (BOI)