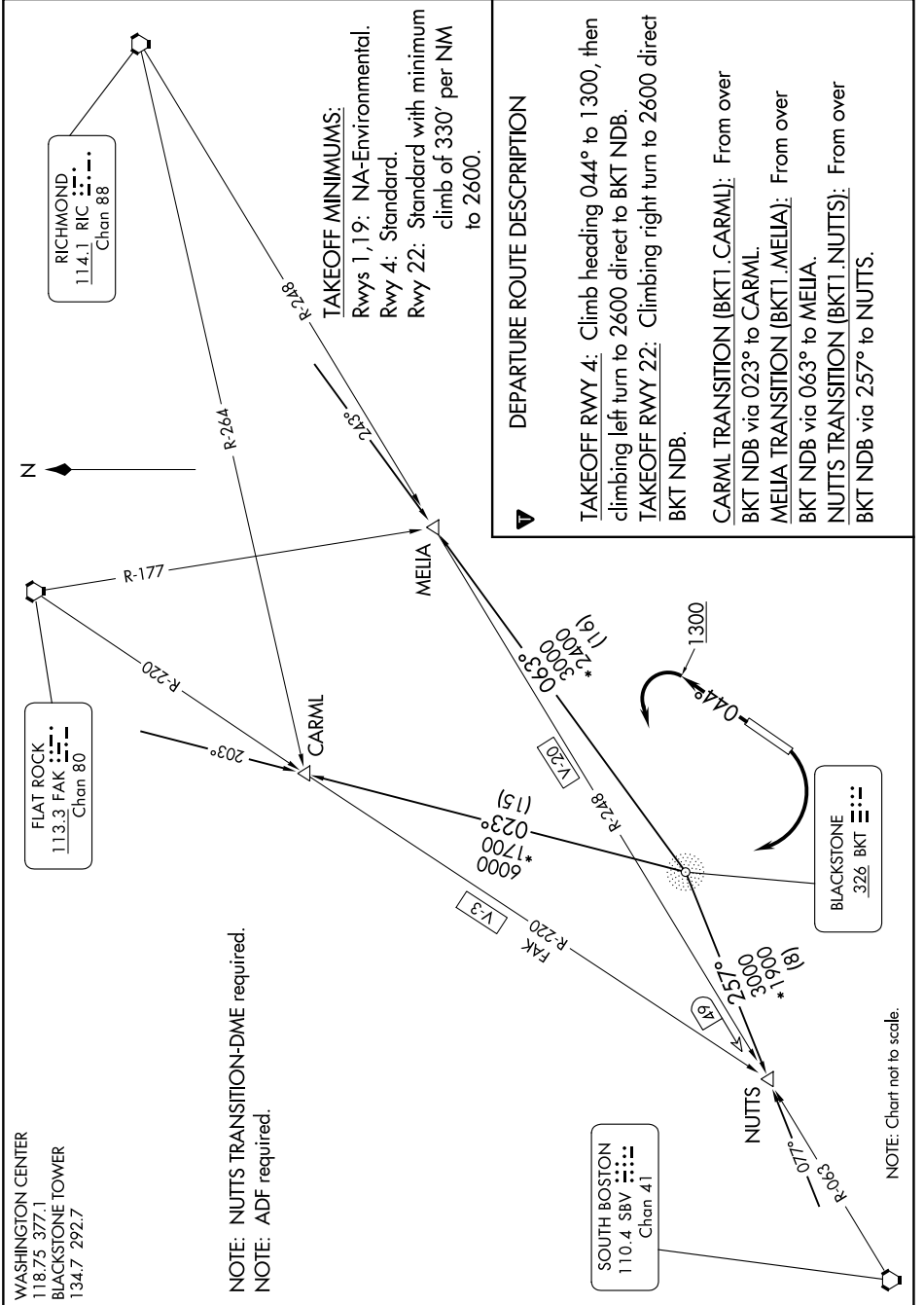


# BLACKSTONE ONE DEPARTURE

NE-3, 31 OCT 2024 to 28 NOV 2024



WASHINGTON CENTER  
118.75 377.1  
BLACKSTONE TOWER  
134.7 292.7

FLAT ROCK  
113.3 FAK  
Chan 80

RICHMOND  
114.1 RIC  
Chan 88

SOUTH BOSTON  
110.4 SBV  
Chan 41

BLACKSTONE  
326 BKT

NOTE: NUTTS TRANSITION+DME required.  
NOTE: ADF required.

NOTE: Chart not to scale.

## DEPARTURE ROUTE DESCRIPTION

**TAKEOFF RWY 4:** Climb heading 044° to 1300, then climbing left turn to 2600 direct to BKT NDB.

**TAKEOFF RWY 22:** Climbing right turn to 2600 direct BKT NDB.

**CARML TRANSITION (BKT1.CARML):** From over BKT NDB via 023° to CARML.

**MELIA TRANSITION (BKT1.MELIA):** From over BKT NDB via 063° to MELIA.

**NUTTS TRANSITION (BKT1.NUTTS):** From over BKT NDB via 257° to NUTTS.

### TAKEOFF MINIMUMS:

Rwys 1, 19: NA-Environmental.  
Rwy 4: Standard.  
Rwy 22: Standard with minimum climb of 330' per NM to 2600.

NE-3, 31 OCT 2024 to 28 NOV 2024

# BLACKSTONE ONE DEPARTURE