

WAAS CH <b>63099</b> <b>W03A</b>	APP CRS <b>032°</b>	Rwy Idg TDZE Apt Elev	<b>6600</b> <b>1661</b> <b>1661</b>
--	------------------------	-----------------------------	---

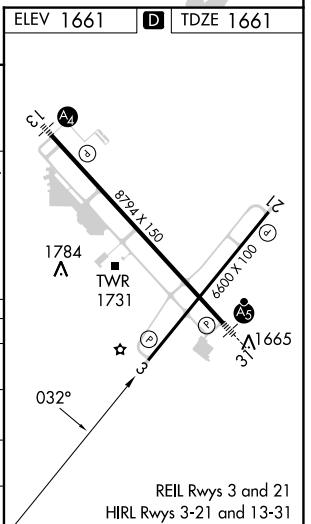
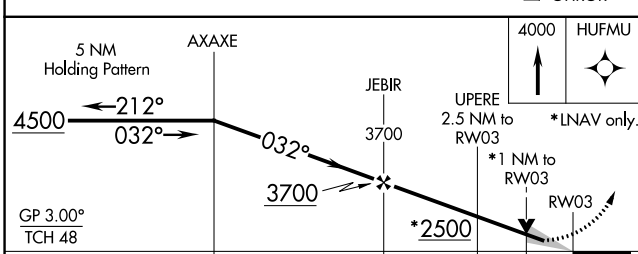
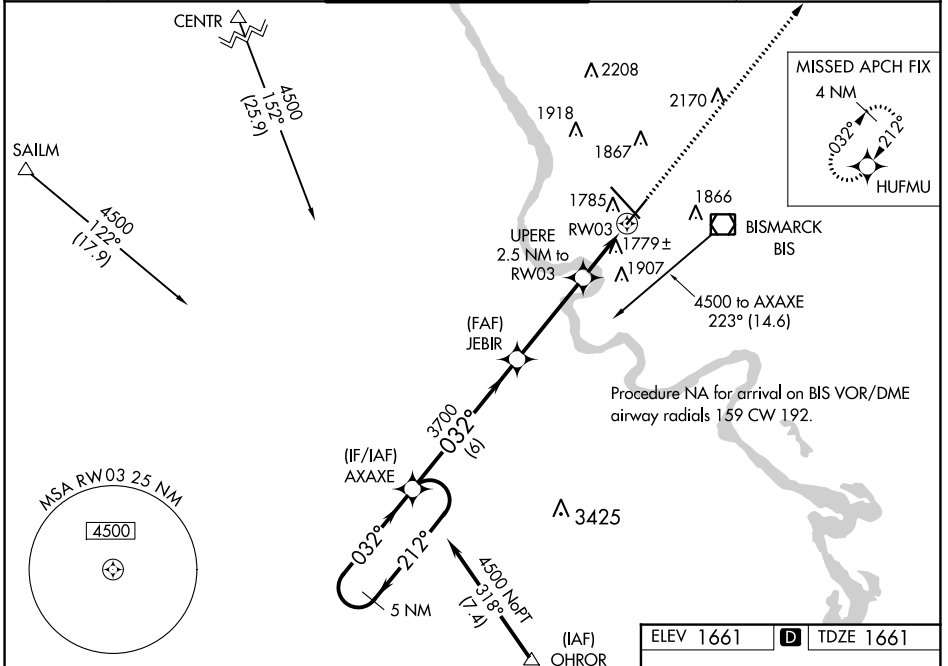
# RNAV (GPS) RWY 3

BISMARCK MUNI (BIS)

**ASR** For uncompensated Baro-VNAV systems, LNAV/VNAV NA below -18°C (0°F) or above 33°C (91°F). DME/DME RNP-0.3 NA.

MISSED APPROACH: Climb to 4000 direct HUFMU and hold.

ATIS <b>119.35</b>	BISMARCK APP CON * <b>126.3 298.9</b>	BISMARCK TOWER * <b>118.3 (CTAF) 0 257.8</b>	GND CON <b>121.9</b>	UNICOM <b>122.95</b>
-----------------------	--	---	-------------------------	-------------------------



CATEGORY	A	B	C	D
LPV DA		1861-3/4	200 (200-3/4)	
LNAV/VNAV DA		2081-13/8	420 (500-13/8)	
LNAV MDA		2040-1	379 (400-1)	
<b>C</b> CIRCLING	2200-1	539 (600-1)	2460-2 1/4 799 (800-2 1/4)	2460-2 1/2 799 (800-2 1/2)

NC-1, 05 SEP 2024 to 03 OCT 2024

NC-1, 05 SEP 2024 to 03 OCT 2024